

## *Orbi*, ecological landmark

My work was included in the exhibition: *Transcapes, Artificial Nature 1, Digitally mediated environments*, UTS Gallery, Sydney, 31 October - 23 November 2006. The exhibition focused on the use of digital technologies as creative tools for rethinking art. It was co-ordinated by the Centre for Digital Design: a research centre focusing on the study and development of dynamic immersive information systems and the creative use of digital media. Additionally, a symposium on the subject of digitally mediated environments was organised simultaneously to highlight recent trends in digital design, art and architecture.

Transcapes provided the opportunity to be exhibited with renowned architectural practices including: OceanD (UK/USA); PTW Architects + Arup + CSCEC (AUS/PRC); Chris Bosse (AUS/DE).

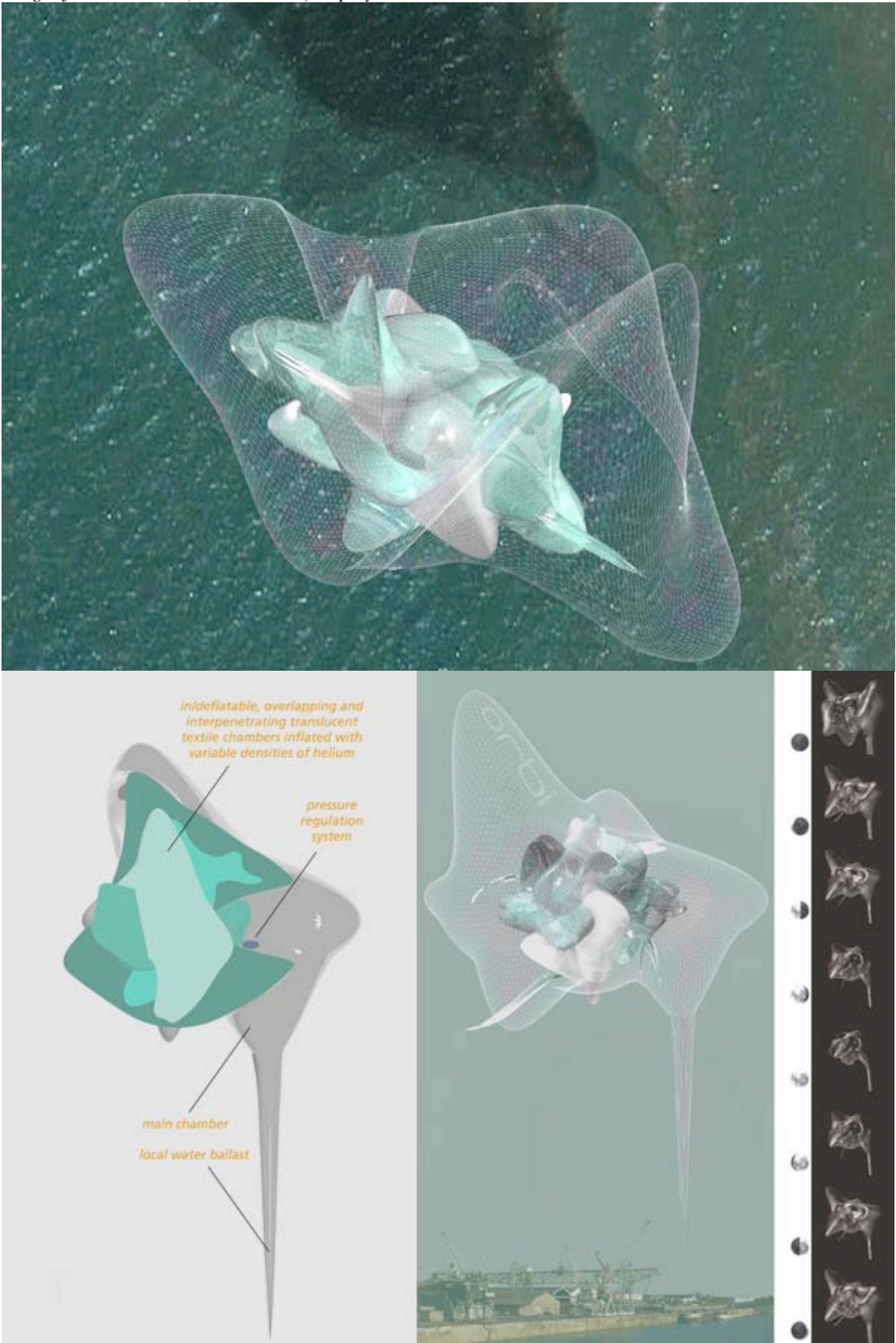
*Orbi*: Design, 3D, Animation by Frank Minnaert.

This practice-based research project was developed for an international architectural competition organised by Central Glass Co. Ltd - Shinkenchiku-sha Co. Ltd in Japan interested in architectural investigations regarding new types of landmark.

Internationally renowned landmarks have either been the expression of myth, religion, technology or power. *Orbi* is a ecological landmark of a new kind, flying geostationary above cities. Its morphological characteristics are derived from the properties of water, air and the living organisms they generate. The morphological changes are synchronised with the variations of water (tidal levels) and air (wind, atmospheric pressure). Through its cyclical transformations *Orbi* could be seen either as a positive award or a negative utopia, an ecological mutant or the embodiment of the ecological threat.

# SUPPORTING EVIDENCE

*Images from the video (3D animation) displayed in the exhibition:*



Poster of the exhibition:

# TRANSCAPES

# ARTIFICIAL NATURE 1

## DIGITALLY MEDIATED ENVIRONMENTS

Opening Tuesday 31 Oct 6-8pm

AandU Studio  
James Angus  
Chris Bosse  
Michael Davis  
Ernest Edmonds  
Dale Jones-Evans  
LAB  
Lev Manovich  
Jon McCormack  
mDa. Lab  
Minimaforms  
Frank Minnaert  
OceanD  
PTW+Arup+CSCEC  
studioWSH  
Young & Popadich



image: Jon McCormack *deniflex* (detail) 2006

**31 OCTOBER - 24 NOVEMBER**  
**MON-FRI 12-6PM**

## UTS:GALLERY

Level 4, 702 Harris Street Ultimo  
02 9514 1652 [utsgallery@uts.edu.au](mailto:utsgallery@uts.edu.au)  
[www.utsgallery.edu.au](http://www.utsgallery.edu.au)



CENTRE for  
DIGITAL  
DESIGN

Transcapes exhibition is curated by Steve Hatzellis on behalf of the Centre for Digital Design, contact [steve.hatzellis@uts.edu.au](mailto:steve.hatzellis@uts.edu.au)





Postcard of the exhibition:



Photo of the exhibition (Steve Hatzellis pictured)



Link to UTS:Gallery archives:

[http://www.utsgallery.uts.edu.au/gallery/past/2006/artificial\\_1006.html](http://www.utsgallery.uts.edu.au/gallery/past/2006/artificial_1006.html)





Australian Design: Digital Culture:

227

**Frank Minnaert**

Re-imagine your front yard

**Print for designers**

Exploring the creative possibilities

**Three60**

The art of ink on paper

**GAME BOY**

**Game design:  
behind the  
scenes**

STAM  
0504

Desktop  
Issue #227  
May 07  
\$8.00  
NZ\$9.50



# contents

## May 227

Find this image at [www.jupiterimages.com.au](http://www.jupiterimages.com.au)



### 012 update

#### 018 debrief

**Website** – Design Royale

**Studio** – Platform 5

**Website** – MAXCO Creative

#### 024 profile

**Talk to your neighbours**

Frank Minnaert asks us to re-imagine our front yards, writes Melanie Hick.

#### 030 Game Boy

Simon Smithson takes a look at what goes on behind the scenes of game design.

#### 038 InDesign 2007

### 040 coolstuff

#### 044 snapshot

Stratos Pavlis explains what prospective employers are really looking for in a designer.

#### 046 type

The French can have bad typography, but why? Jack Yan investigates.

#### 049 roadtrip

**South Korea:** The city is everywhere.

#### 054 webguide

**Telling Stories**

### print centre

#### 058 introduction

by Rita Siow.

#### 060 news

#### 062 case study

**Print** – Yay Tractor

#### 064 print for designers

Seamus Byrne takes a look at all the major printing formats and their creative possibilities.

#### 066 foreign policy

**A different set of design principals**

It's the dawning of a new day, writes Andy Polaine.

### 068 the future's so bright

Printing processes are continually adapting, writes Garry Muratore.

#### 072 countdown to printEx 2007

#### 074 perfect fit

Jo Spurling finds out how Three60 transformed a new uncoated paper stock into a work of art.

#### 078 product reviews

#### 082 rearview



leads him on this path. Once a project crosses his desk, his creativity springs to action. "While I am gathering a maximum of information about a project, I am flooded and bombarded by ideas, concepts, images, references, meaning, forms, materials, memories, visions, sensations, colours, music and words. One could think the process is to go step-by-step, adding one idea after another, but I have the feeling that I go the other way round. It is more like reorganising something unstable and chaotic in order to reveal what the project is," he enthuses. Minnaert sees his job as selecting and processing the gems from this jungle of information in order to find the most relevant idea for the design process. As can be clearly seen with the award-

winning Nimby, he looks for places, people and meaning to form part of his design answers.

Following his win last year, Minnaert is determined to build on his success and slowly create a reputable and inventive design firm. This year his firm will focus on small scale projects, such as houses and commercial projects based in Australia as well as other different design projects. Minnaert himself will focus on enjoying his new country. "I have a lot of different expectations and I could fill the page with them," he says. "But spontaneously I would say that I am looking forward to finding people who share my way of thinking and with whom I could work on larger projects, such as public spaces, or creating in situ art installations, writing scripts for TV and, quite unexpectedly, camping. I discovered camping in Australia, which led me to develop a new concept about the question

of camping. Maybe I should enter the next IDEA Awards competition with this project?"

In 2007, the IDEA Awards will add another category. So if you are inspired by Minnaert's dedication to concept, you might consider entering this new category of Designer/Design Practice of the year. This category publishes and awards conceptual and prototype Australian designs for products of relevance to the interior. Previously unpublished work developed and completed between January 2006 and June 2007, within Australia, will be accepted for entry. Ideas will be awarded in this category; however, unlike the purely conceptual category, the judges will also be looking for practical manufacturing potential. ■

For more information on Frank Minnaert and his work, or to get in contact with him visit [www.frankminnaert.com](http://www.frankminnaert.com).



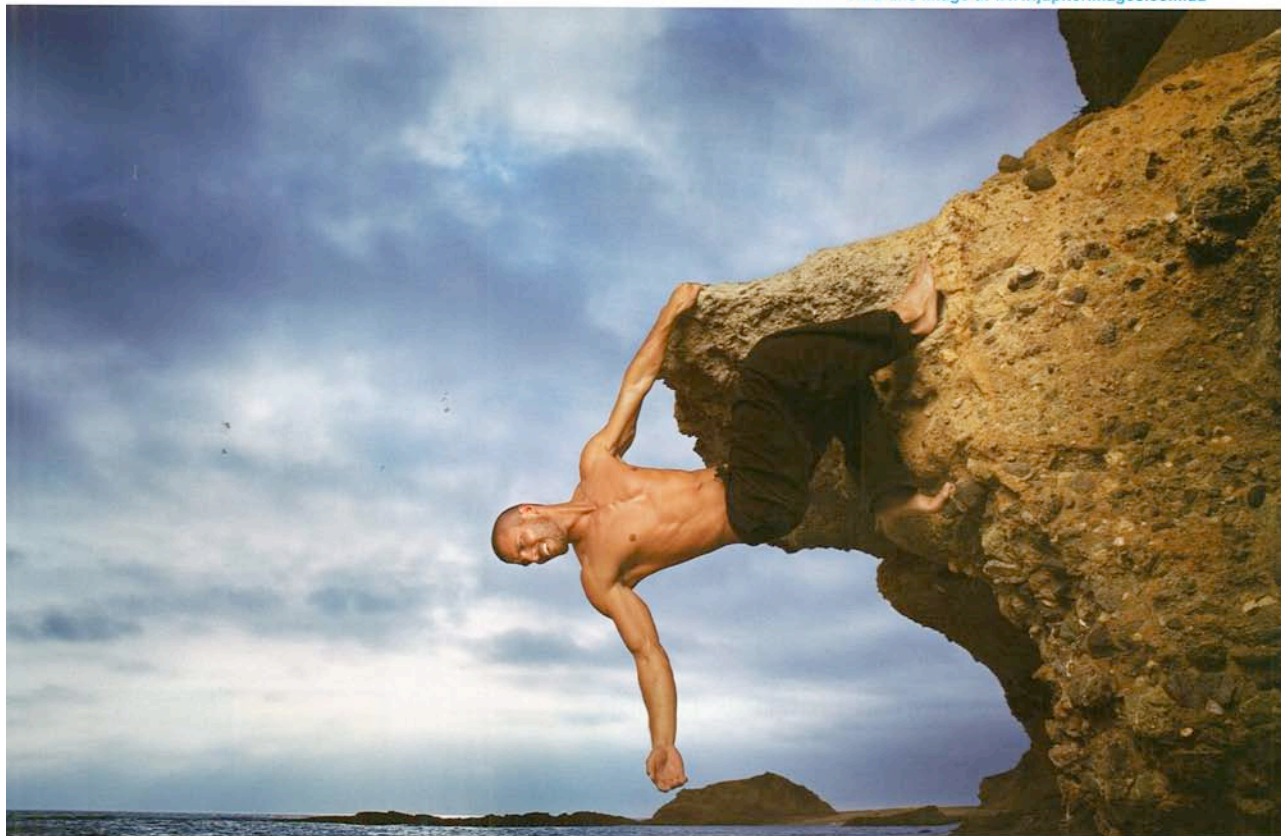
left: Orbi - Ecological Landmark: The morphological characteristics of ORBI are derived from the properties of water, air and the living organisms they generate. The morphological changes are synchronised with the variations of water and air.  
right: Orbi - Ecological Landmark: Through its cyclical transformations ORBI could be seen either as a positive award or a negative utopia, an ecological mutant or the embodiment of the ecological threat.





# info May227

Find this image at [www.jupiterimages.com.au](http://www.jupiterimages.com.au)



#### Group Publisher

Grant Arnott  
[grant.arnott@niche.com.au](mailto:grant.arnott@niche.com.au)

#### Acting Editor

Jo Spurling  
[jo.spurling@niche.com.au](mailto:jo.spurling@niche.com.au)

#### Technical Editor

Seamus Byrne  
[seamus.byrne@niche.com.au](mailto:seamus.byrne@niche.com.au)

#### Sub Editor

Madeleine Swain

#### National Advertising Manager

Steven O'Donnell  
[steven.odonnell@niche.com.au](mailto:steven.odonnell@niche.com.au)

#### Production Manager

Antionette Santoro  
[antionette.santoro@niche.com.au](mailto:antionette.santoro@niche.com.au)

#### Digital Prepress

Emma Meagher  
[emma.meagher@niche.com.au](mailto:emma.meagher@niche.com.au)

#### Advertising Enquiries

tel: 03 9948 4900

#### Subscriptions

tel: 1800 804 160  
[subscriptions@niche.com.au](mailto:subscriptions@niche.com.au)

#### Contributing Writers

Andy Polaine  
Garry Muratore  
Jack Yan  
Jay Palmer  
John Fry  
Melanie Hick  
Rita Slow  
Simon Smithson  
Stratos Pavlis

#### Submissions

We encourage readers to submit suitable work for consideration by the Editor. All correspondence of this nature should be directed to the Editor at the address below. To ensure return of material, a postage paid self-addressed envelope must be supplied. Niche Media Pty Ltd accepts no liability for loss or damage of unsolicited material.



#### Desktop is a publication of Niche Group Pty Ltd

ACN 13 064 613 529  
Head Office, 170 Dorcas St,  
South Melbourne, VIC 3205  
tel: 03 9948 4900, fax: 03 9948 4999

#### Chairman

Nicholas Dower

#### Managing Director

Paul Lidgerwood  
[paul.lidgerwood@niche.com.au](mailto:paul.lidgerwood@niche.com.au)

#### Finance Director

John Clarke

#### Studio Design Manager

Keely Atkins  
[keely.atkins@niche.com.au](mailto:keely.atkins@niche.com.au)

#### Ctp printing

McKellar Renown Press,  
tel: 03 9568 3466

ISSN 1322-9230 All rights reserved.  
No part of this publication may be reproduced, stored in a retrieval system, transmitted in any form or by any other means, electronic, mechanical, photocopying, recording or otherwise, without the prior permission in writing of the publishers. While every effort has been made to ensure the accuracy of the information in this publication, the publishers assume no responsibility for errors or omissions or any consequences of reliance on this publication. The opinions expressed in this publication do not necessarily represent the views of the editor or the publisher.  
© 2007 Niche Group Pty Ltd  
Cover image courtesy of Krome Studios.