

The gravity of human impacts mediates coral reef conservation gains

J.E. Cinner,^{1*} Eva Maire^{1,2}, Cindy Huchery¹, M. Aaron MacNeil^{3,4}, Nicholas A. J. Graham^{1,5}, Camilo Mora⁶, Tim R. McClanahan⁷, Michele L. Barnes¹, John N. Kittinger^{8,9}, Christina C. Hicks^{1,5}, Stephanie D'Agata^{2,7,10}, Andrew Hoey¹, Georgina G. Gurney¹, David A. Feary¹¹, Ivor Williams¹², Michel Kulbicki¹³, Laurent Vigliola¹⁰, Laurent Wantiez¹⁴, Graham J. Edgar¹⁵, Rick D. Stuart-Smith¹⁵, Stuart A. Sandin¹⁶, Alison Green¹⁷, Marah J. Hardt¹⁸, Maria Beger^{19,20}, Alan Friedlander^{21,22}, Shaun K. Wilson^{23,24}, Eran Brokovich²⁵, Andrew J. Brooks²⁶, Juan J. Cruz-Motta²⁷, David J. Booth²⁸, Pascal Chabanet²⁹, Charlotte Gough³⁰, Mark Tupper³¹, Sebastian C.A. Ferse³², U. Rashid Sumaila³³, Shinta Pardede⁷, David Mouillot^{1,2}

¹Australian Research Council Centre of Excellence for Coral Reef Studies, James Cook University, Townsville, QLD 4811 Australia; ²MARBEC, UMR IRD-CNRS-UM-IFREMER 9190, University of Montpellier, 34095 Montpellier Cedex, France; ³Australian Institute of Marine Science, PMB 3 Townsville MC, Townsville, QLD 4810 Australia; ⁴Department of Biology, Dalhousie University, Halifax, NS B3H 3J5 Canada; ⁵Lancaster Environment Centre, Lancaster University, Lancaster, LA1 4YQ, UK; ⁶Department of Geography, University of Hawai'i at Manoa, Honolulu, Hawai'i 96822 USA; ⁷Wildlife Conservation Society, Global Marine Program, Bronx, NY 10460 USA; ⁸Conservation International, Center for Oceans, 7192 Kalaniana'ole Hwy Ste G-230, Honolulu, HI 96825 USA; ⁹Arizona State University, Center for Biodiversity Outcomes, Julie Ann Wrigley Global Institute of Sustainability, Life Sciences Center, A Wing 451 E Tyler Mall, Room 208, Tempe, AZ 85281; ¹⁰Institut de Recherche pour le Développement, UMR IRD-CNRS ENTROPIE, Laboratoire d'Excellence LABEX CORAIL, BP A5, 98848 Nouméa Cedex, New Caledonia; ¹¹School of Life Sciences, University of Nottingham, Nottingham NG7 2RD, UK; ¹²Coral Reef Ecosystems Program, NOAA Pacific Islands Fisheries Science Center, Honolulu, HI 96818 USA; ¹³UMR Entropie, Labex Corail, -IRD, Université de Perpignan, 66000, Perpignan, France; ¹⁴EA4243 LIVE, University of New Caledonia, BPR4 98851 Noumea cedex, New Caledonia; ¹⁵Institute for Marine and Antarctic Studies, University of Tasmania, Hobart, Tasmania, 7001 Australia; ¹⁶Scripps Institution of Oceanography, University of California, San Diego, CA 92093 USA; ¹⁷The Nature Conservancy, Brisbane, Australia; ¹⁸Future of Fish, 7315 Wisconsin Ave, Suite 1000W, Bethesda, MD 20814, USA; ¹⁹Australian Research Council Centre of Excellence for Environmental Decisions, Centre for Biodiversity and Conservation Science, University of Queensland, Brisbane St Lucia QLD 4074 Australia; ²⁰School of Biology, Faculty of Biological Sciences, University of Leeds, LS2 9JT, UK; ²¹Fisheries Ecology Research Lab, Department of Biology, University of Hawaii, Honolulu, HI 96822, USA; ²²National Geographic Society, Pristine Seas Program, 1145 17th Street N.W., Washington, D.C. 20036-4688, USA; ²³Department of Parks and Wildlife, Kensington, Perth WA 6151 Australia; ²⁴Oceans Institute, University of Western Australia, Crawley, WA 6009, Australia; ²⁵The Israel Society of Ecology and Environmental Sciences, Kehilat New York 19 Tel Aviv, Israel; ²⁶Marine Science Institute, University of California, Santa Barbara, CA 93106-6150, USA; ²⁷Departamento de Ciencias Marinas., Recinto Universitario de Mayaguez, Universidad de Puerto Rico, 00680, Puerto Rico; ²⁸School of Life Sciences, University of Technology Sydney 2007 Australia; ²⁹UMR ENTROPIE, Laboratoire d'Excellence LABEX CORAIL, Institut de Recherche pour le Développement, CS 41095, 97495 Sainte Clotilde, La Réunion (FR); ³⁰Blue Ventures Conservation, Omnibus Business Centre, 39-41 North Road, London N7 9DP, United Kingdom; ³¹Advanced Centre for Coastal and Ocean Research and Development, Chaguaramas Campus, University of Trinidad and Tobago, 2nd Avenue North, Western Main Road, Chaguaramas, Trinidad and Tobago, W.I.; ³²Leibniz Centre for Tropical Marine Research (ZMT), Fahrenheitstrasse 6, D-28359 Bremen, Germany; ³³Fisheries Economics Research Unit, Institute for the Oceans and Fisheries and Liu Institute for Global Studies, the University of British Columbia, 2202 Main Mall, Vancouver, B.C., V6T 1Z4, Canada

Submitted to Proceedings of the National Academy of Sciences of the United States of America

Coral reefs provide ecosystem goods and services for millions of people in the tropics, but reef conditions are declining worldwide. Effective solutions to the crisis facing coral reefs depends in part on understanding the context under which different types of conservation benefits can be maximized. Our global analysis of nearly 1,800 tropical reefs reveals how the intensity of human impacts in the surrounding seascape, measured as a function of human population size and accessibility to reefs ('gravity'), diminishes the effectiveness of marine reserves at sustaining reef fish biomass and the presence of top predators, even where compliance with reserve rules is high. Critically, fish biomass in high compliance marine reserves located where human impacts were intensive tended to be less than a quarter that of reserves where human impacts were low. Likewise, the probability of encountering top predators on reefs with high human impacts was close to zero, even in high-compliance marine reserves. However, we find that the relative difference between openly fished sites and reserves (what we refer to as conservation gains) are highest for fish biomass (excluding predators) where human impacts are moderate and for top predators where human impacts are low. Our results illustrate critical ecological tradeoffs in meeting key conservation objectives: reserves placed where there are moderate to high human impacts can provide substantial conservation gains for fish biomass, yet they are unlikely to support key ecosystem functions like higher-order predation, which is more prevalent in reserve locations with low human impacts.

Text

Significance

Marine reserves that prohibit fishing are a critical tool for sustaining coral reef ecosystems. Yet it remains unclear how human impacts in surrounding areas affect the capacity of marine reserves to deliver key conservation benefits. Our global study found that only marine reserves in areas of low human impact consistently sustained top predators. Fish biomass inside marine reserves declined along a gradient of human impacts in surrounding areas, however, reserves located where human impacts are moderate had the greatest difference in fish biomass compared to openly fished areas. Reserves in low human impact areas are required for sustaining ecological functions like high-order predation, but reserves in high impact areas can provide substantial conservation gains in fish biomass.

Reserved for Publication Footnotes

marine reserves | fisheries | coral reefs | social-ecological | socio-economic

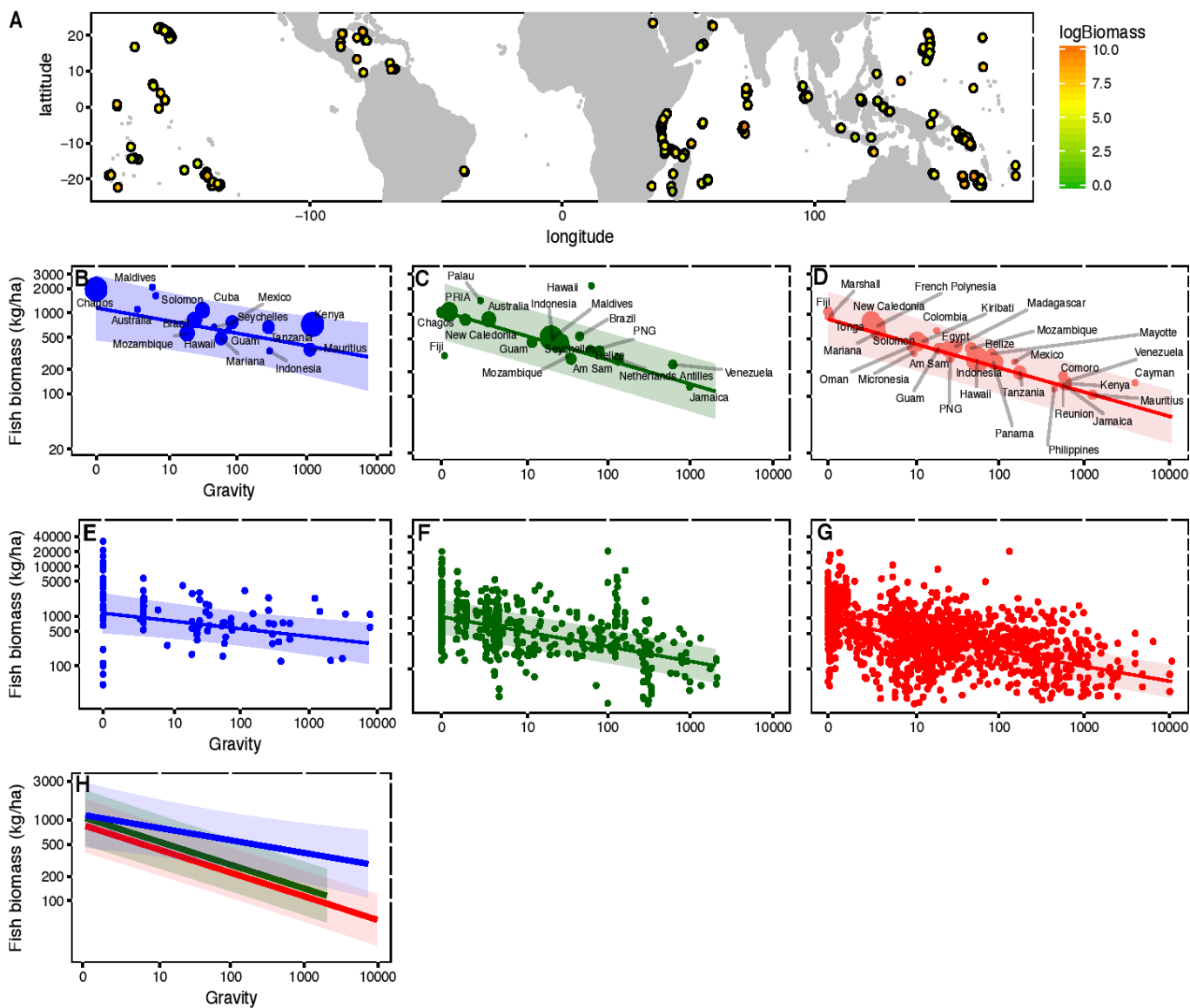


Fig. 1. Model-predicted relationships between human gravity and reef fish biomass under different types of fisheries management. A) Map of our study sites with color indicating the amount of fish biomass at each site. Partial plots of the relationship between biomass and gravity under different types of management at the nation/state (B-D), and reef site (F-H) scale; openly fished (red), restricted (green), and high-compliance marine reserves (blue). Shaded areas represent 95% confidence intervals. Bubble size in panels B-D reflect the number of reef sites in each nation/state, scaled for each management type (such that the largest bubble in each panel represent the highest number of sites per nation/state for that type of management; Table S5). G) Model-predicted relationships of how reef fish biomass declines as gravity increases by management type.

The world's coral reefs are rapidly degrading (1-3), which is diminishing ecological functioning and potentially affecting the wellbeing of the millions of people with reef-dependent livelihoods (4). Global climate change and local human impacts (such as fishing) are pervasive drivers of reef degradation (1, 5). In response to this "coral reef crisis", governments around the world have developed a number of reef conservation initiatives (1, 6, 7). Our focus here is on the efficacy of management tools that limit or prohibit fishing. Management efforts that reduce fishing mortality should help to sustain reef ecosystems by increasing the abundance, mean body size, and diversity of fishes that perform critical ecological functions (8-10). In practice, however, outcomes from these reef management tools have been mixed (5, 11-13).

A number of studies have examined the social, institutional, and environmental conditions that enable reef management to achieve key ecological outcomes, such as sustaining fish biomass

(5, 14, 15), coral cover (16), or the presence of top predators (17). These studies often emphasize the role of: 1) types of key management strategies in use such as marine reserves, where fishing is prohibited, or areas where fishing gears and/or effort are restricted to reduce fishing mortality (8, 18); 2) levels of compliance with management (12, 19, 20); 3) the design characteristics of these management initiatives, for example the size and age of reserves, and whether they are placed in remote versus populated areas (11, 21); and 4) the role of social drivers such as markets, socioeconomic development, and human demography that shape people's relationship with nature (14, 22).

In addition to examining when key ecological conditions are sustained, it is also crucial to understand the context under which conservation gains can be maximized (23, 24). By conservation gains, we are referring to the difference in a conservation outcome (e.g. the amount of fish biomass) when some form of management (i.e. a marine reserve or fishery restriction) is

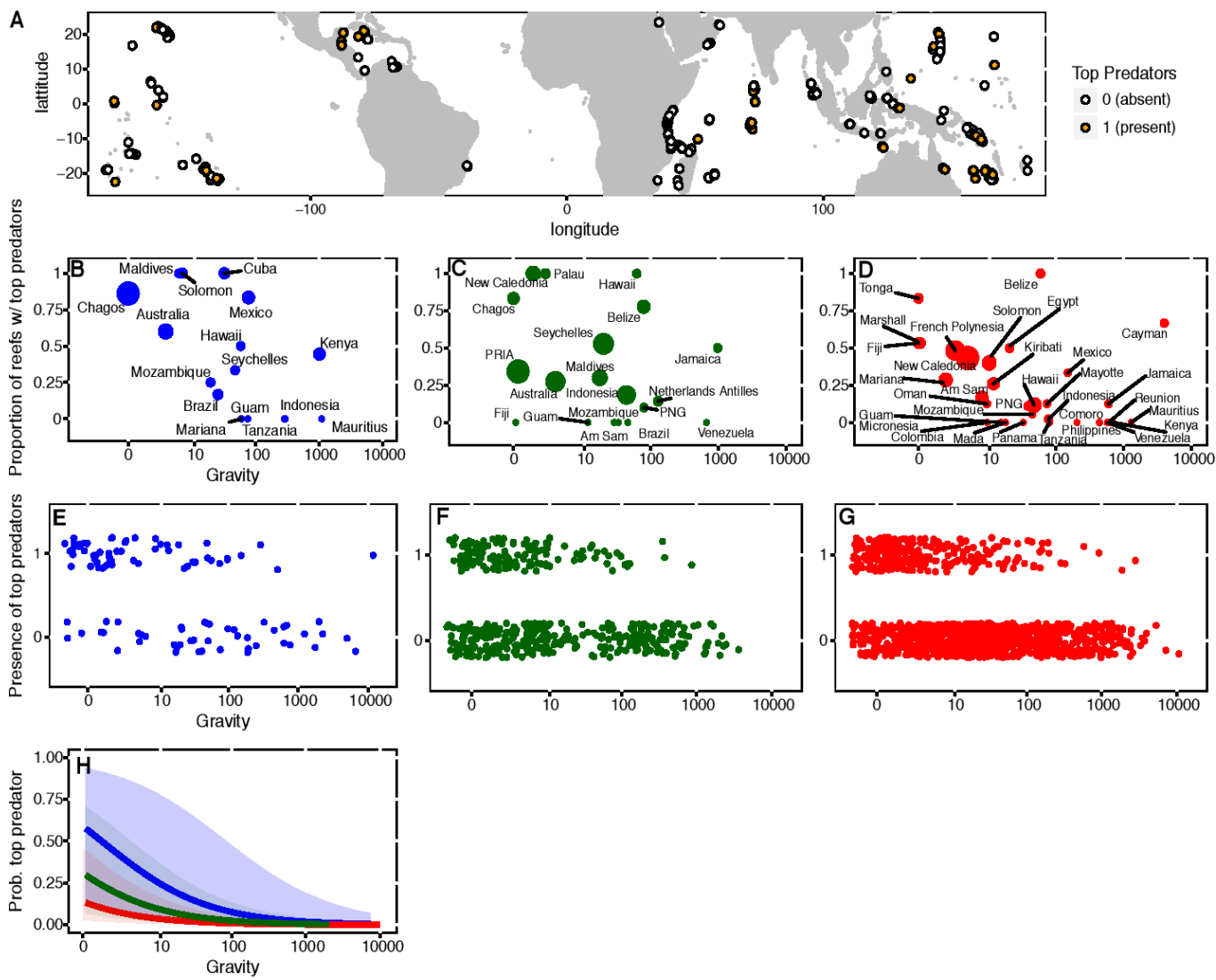


Fig. 2. Model-predicted relationships between human gravity and the probability of encountering top predators under different types of fisheries management. A) Map of our study sites indicating the presence of top predators. The presence of top predators along a gravity gradient under different types of management at the nation/state (C-E) and site (F-H) scale; openly fished (red), restricted (green), and high-compliance marine reserves (blue). Bubble size in panels F-G reflect the number of reef sites in each nation/state, scaled for each management type (such that the largest bubble in each panel represent the highest number of sites per nation/state for that type of management; Table S5). H) Model-predicted relationships of how the probability of encountering predators declines as gravity increases. Shaded areas represent 95% confidence intervals.

implemented relative to unmanaged areas. These conservation gains can be beneficial for both people and ecosystems. For example, increased fish biomass inside marine reserves is not only related to a range of ecosystem states and processes (18), but can also result in spillover of adults and larvae to surrounding areas, which can benefit fishers (25-27). The potential to achieve conservation gains may depend on the intensity of human impacts in the surrounding seascape (23, 24), yet, these effects have never been quantified.

Here, we use data from 1798 tropical coral reef sites in 44 nations, states, or territories (hereafter 'nation/states') in every major coral reef region of the world to quantify how expected conservation gains in two key ecological outcomes are mediated by the intensity of human impact, namely: i) targeted reef fish biomass (i.e. species generally caught in fisheries); and ii) the presence of top predators (Methods, SI Appendix; Table S1). To quantify human impact at each site, we draw from a long history of social science theory and practice to develop a metric referred to as 'gravity' (Box 1). The concept of gravity (also called

interactance) has been used in economics and geography to measure economic interactions, migration patterns, and trade flows since the late 1800s (28-30). We adapt this approach to examine potential interactions with reefs as a function of how large and far away the surrounding human population is (Box 1). At each site, we also determined the status of reef management, grouped into either: i) openly fished, where sites are largely unmanaged and national or local regulations tend to be poorly complied with; ii) restricted fishing, where there are actively enforced restrictions on the types of gears that can be used (e.g. bans on spear guns) or on access (e.g. marine tenure systems that restrict fishing by 'outsiders'); or iii) high-compliance marine reserves, where fishing is effectively prohibited (Methods). We hypothesized that our ecological indicators would decline with increasing gravity in fished areas, but that marine reserves areas would be less sensitive to gravity. To test our hypotheses, we used general and generalized linear mixed effects models to predict target fish biomass and the presence of top predators, respectively, at each site based on gravity and management status, while accounting

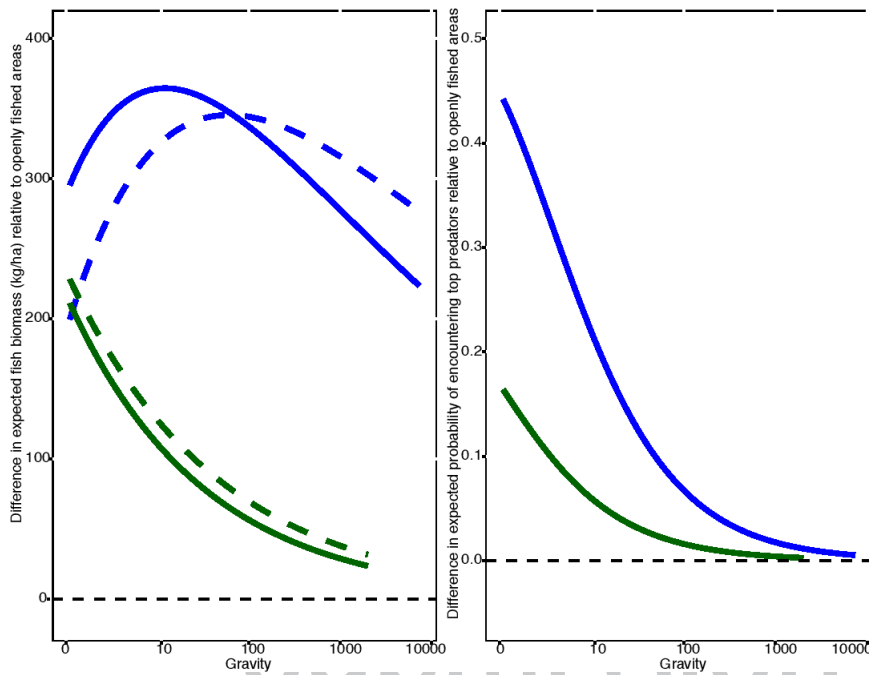


Fig. 3. The conservation gains (i.e. the difference between openly fished sites and managed areas) for high-compliance marine reserves (blue line) and restricted fishing (green line) for (A) target fish biomass (solid lines include biomass of top predators, dotted lines exclude top predator biomass as per Fig. S2), and (B) the probability of encountering top predators change along a gradient of gravity.

for other key environmental and social conditions thought to influence our ecological outcomes (14 ; Methods). Based on our models, we calculated expected conservation gains along a gravity gradient as the difference between managed sites and openly fished sites.

Box 1

Drawing on an analogy from Newton's Law of Gravitation, the gravity concept predicts that interactions between two places (e.g. cities) are positively related to their mass (i.e. population) and inversely related to the distance between them (31). The gravity concept is often considered one of the most successful and long-enduring empirical models in economics and geography (31), but has rarely been directly applied in a natural resource management setting and holds much promise in informing reef conservation and management. Application of the gravity concept in a reef governance context posits that human interactions with a reef are a function of the population of a place divided by the squared time it takes to travel to the reefs (we used travel time instead of linear distance to account for the differences incurred by travelling over different surfaces such as water, roads, tracks; Box 1 Fig.; SI Appendix; Table S2; 14, 32). Here, we build upon previous work (14) by developing a new indicator that examines the cumulative human gravity of all populated places within a 500-km radius of a given reef, which aims to capture both market and subsistence pressures on reef fish biomass. We tested the predictive power of a series of gravity metrics with varying radiuses (50km, 250km, 500km) and exponents of travel time (travel time, travel time², travel time³; Methods, SI Appendix; Table S3). A key limitation of our global gravity metric is that we are unable to capture local variations in efficiencies that may affect fishing mortality per capita, such as fishing fleet technology or infrastructure (e.g. road) quality.

Our analysis reveals that human gravity was the strongest predictor of fish biomass (Fig. 1, S1). Fish biomass consistently declined along a human gravity gradient, a trend particularly evident at the nation/state scale (Fig1B-D). However, this relationship can vary by management type (Fig. 1, SI Appendix; Fig. S1). Specifically, we found that biomass in reserves demonstrated a flatter (but still negative) relationship with gravity (Fig. 1B)

compared to openly fished and restricted areas (Fig. 1C, D). Interestingly, this differential slope between reserves and fished areas (Fig. 1H) was due to a strong interaction between gravity and reserve age such that older reserves contributed more to biomass in high gravity situations than in low gravity ones (SI Appendix; Fig. S1). This is likely due to fish stocks at high gravity sites being heavily depleted and requiring decades to recover, whereas low gravity sites would likely require less time to reach unfished biomass levels (8). Thus, given average reserve age in our sample (15.5 years), biomass in reserves did not decline as rapidly with gravity compared to fished and restricted areas (Fig. 1H). In the highest gravity locations, modelled fish biomass in marine reserves was approximately five times higher than in fished areas (270kg/ha compared to 56 kg/ha) (Fig.1H). At the reef site scale, there was considerable variability in reef fish biomass, particularly at low gravity (Fig. 1E-G). For example, at the lowest gravity locations, biomass levels in reserves spanned more than 3 orders of magnitude (Fig. 1E). Importantly, there was never extremely high biomass encountered in high gravity locations. Our estimate of target fish biomass included top-predators. As a supplemental analysis, we also examined target fish biomass with the biomass of top predators excluded, which displays a similar trend, but with lower fish biomass in reserves at low gravity compared to when top predators are included (SI Appendix; Fig S2).

A key finding from our study is that top predators were encountered on only 28% of our reef sites, but as gravity increases, the probability of encountering top predator on tropical coral reefs dropped to almost zero (<0.005), regardless of management (Fig 2). The probability of encountering top predators was strongly related to gravity and the type of management in place, as well as sampling methodology and area surveyed (Fig. 2, SI Appendix; Fig. S1). At low gravity, the probability of encountering a top predator was highest in marine reserves (0.59) and lowest in fished areas (0.14), when controlling for sampling and other environmental and social drivers (Fig 2, SI Appendix; Fig. S1).

Our study demonstrates the degree to which fish communities inside marine reserves can be affected by human impacts in the broader seascape (Fig. 1,2). Critically, high-compliance marine reserves in the lowest gravity locations tended to support more

545
546
547
548
549
550
551
552
553
554
555
556
557
558
559
560
561
562
563
564
565
566
567
568
569
570
571
572
573
574
575
576
577
578
579
580
581
582
583
584
585
586
587
588
589
590
591
592
593
594
595
596
597
598
599
600
601
602
603
604
605
606
607
608
609
610
611
612

613
614
615
616
617
618
619
620
621
622
623
624
625
626
627
628
629
630
631
632
633
634
635
636
637
638
639
640
641
642
643
644
645
646
647
648
649
650
651
652
653
654
655
656
657
658
659
660
661
662
663
664
665
666
667
668
669
670
671
672
673
674
675
676
677
678
679
680

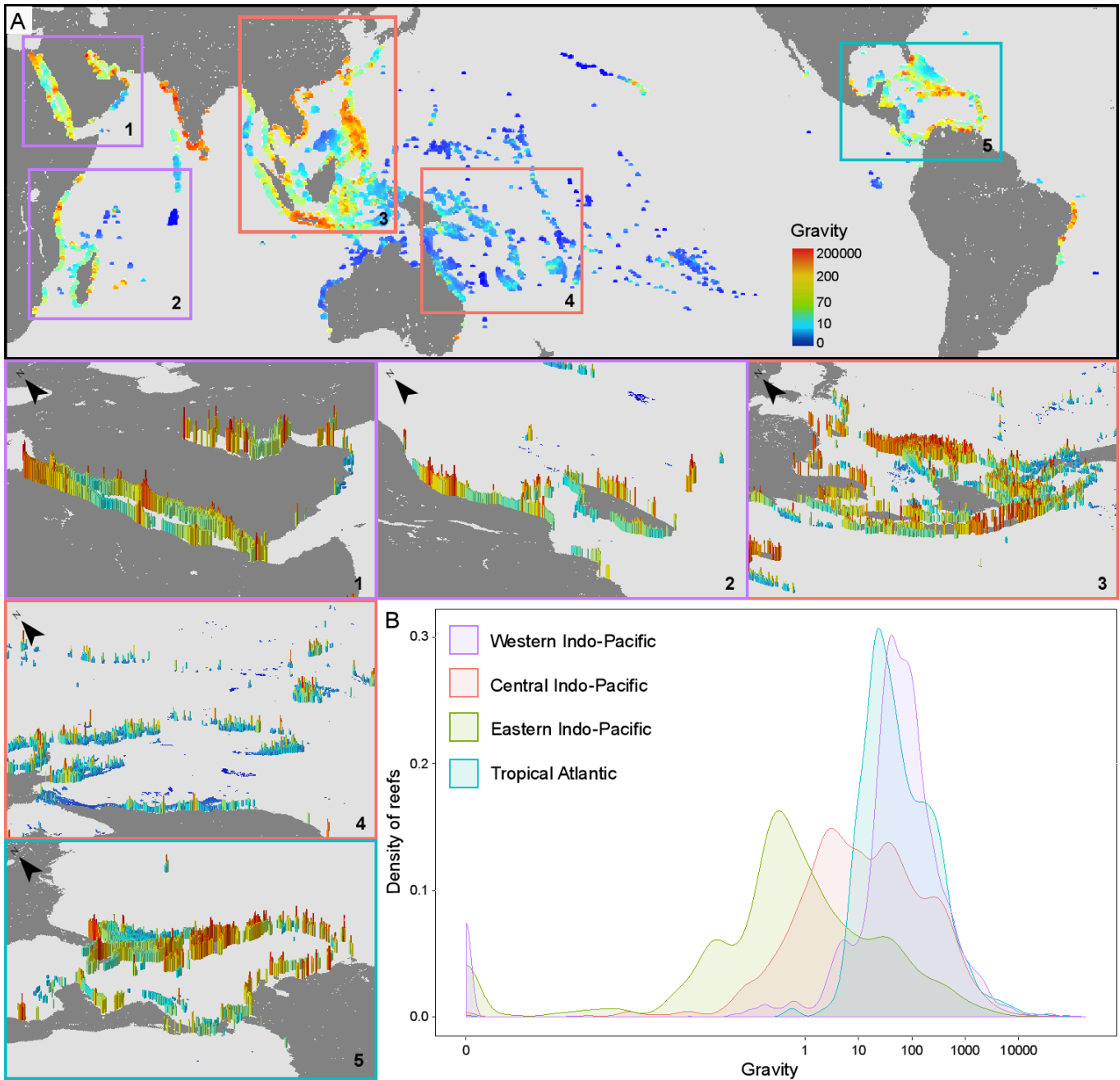


Fig. 4. Distribution of gravity on the world's coral reefs. A) Map of gravity calculated for every coral reef in the world ranging from blue (low gravity) to red (high gravity). The four coral reef realms (70) are delineated. Insets highlight gravity for key coral reef regions of the world: 1) Red Sea; 2) Western Indian Ocean; 3) Southeast Asia; 4) Great Barrier Reef of Australia and the South Pacific; 5) Caribbean. For visual effect, gravity values in inset maps are also given vertical relief, with higher relief indicating higher gravity values. B) Distribution of gravity values per coral reef realm.

than four times more fish biomass than the highest gravity reserves (1150 versus 270 kg/ha, respectively; Fig. 1H). Likewise, the modelled probability of encountering a top predator decreased by more than one hundred-fold from 0.58 in low gravity reserves to 0.0046 in the highest gravity reserves (Fig 2H). Our study design meant that it was not possible to uncover the mechanisms responsible for this decline of ecological conditions indicators within marine reserves along a gravity gradient, but this pattern of depletion is likely related to: 1) human impacts in the surrounding seascape (fishing, pollution, etc.) affecting ecological processes (recruitment, feeding behavior, etc.) within reserves (33, 34); 2) almost every marine reserve is likely to have some degree of poaching, even where compliance is considered high

(20, 35) and the cumulative impacts from occasional poaching events is probably higher in high gravity situations; 3) the life history of top predators, such as old age of reproduction and small clutch size which makes them particularly susceptible to even mild levels of exploitation (36); and/or 4) high gravity marine reserves in our sample possibly being too young, or too small to provide substantial conservation gains (11, 37). We conducted a supplementary analysis to further examine this latter potential explanation. Due to collinearity, we could not directly account for reserve size in our model, but conducted a supplemental analysis where we separated reserves into small (<28km²) and large (Methods, Fig. S3). We found that the biomass and probability

681
682
683
684
685
686
687
688
689
690
691
692
693
694
695
696
697
698
699
700
701
702
703
704
705
706
707
708
709
710
711
712
713
714
715
716
717
718
719
720
721
722
723
724
725
726
727
728
729
730
731
732
733
734
735
736
737
738
739
740
741
742
743
744
745
746
747
748

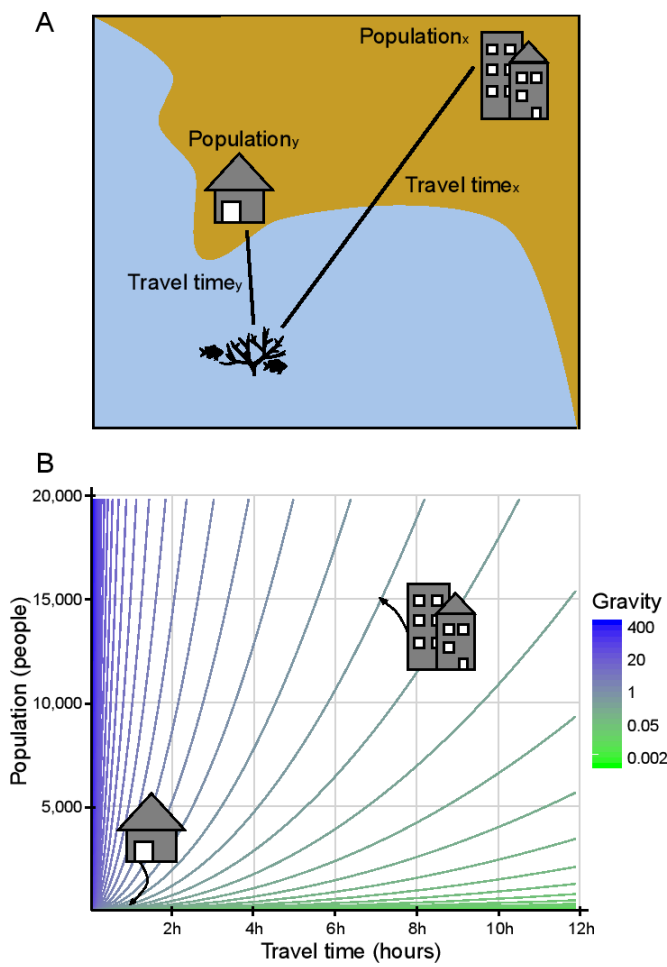


Fig. 5. Box 1 Figure. Operationalizing Gravity. A) Applied to coral reefs, our heuristic of the gravity concept captures interactions between people and coral reef fish as a function of the population of a place divided by the squared time it takes to travel to the reefs (i.e. travel time). B) Gravity isoclines along gradients of population size and travel time illustrate how gravity values could be similar for places that have large populations but are far from the reefs (e.g. population_x = 15,000 people, travel time_x = 7 hours, gravity_x = 306) as to those with small populations that are close to the reef (e.g. population_y = 300 people, travel time_y = 1 hour, gravity_y = 300).

of encountering top predators was higher in large compared to small reserves, but surprisingly, we found a flatter slope for small compared to large reserves (SI Appendix; Fig. S3). However, there were no large high compliance reserves in high gravity areas in our sample, likely due to the social and political difficulties in establishing large reserves near people (38). Since there is little overlap between large and small reserves along the gravity gradient in our sample, we are unable to distinguish the effects of reserve size from those of gravity, but this is an important area for future research. Additionally, we modelled how the relationship between gravity and our ecological outcomes changed with reserve age, comparing outcomes using the average reserve age (15.5 years) to those from reserves nearly twice as old (29 years, which was the third quartile of our global distribution in reserve age). Older reserves were predicted to sustain an additional 180 kg/ha (+66%) of fish biomass at the highest levels of gravity compared to average age reserves. However, the effects of reserve age on the probability of encountering a top predator was less marked: the modelled probability of encountering a top predator in older reserves (29 years) was only 0.01, compared to <0.005 for average age (~15 years) reserves, suggesting that small reserves

common in high gravity situations can support high levels of biomass, but are unlikely to sustain top predators, even when they are mature.

Although absolute fish biomass under all management categories declined with increasing gravity (Fig. 1B,C), the maximum expected conservation gains (i.e. the difference between openly fished and managed) differed by management type along the gravity gradient (Fig. 3A). Interestingly, the conservation gains for restricted fishing is highest in low gravity situations, but rapidly declines as human impacts increase (Fig. 3A, 39). For marine reserves, biomass conservation gains demonstrated a hump-shaped pattern that peaked at very low gravity when predators were included in the biomass estimates (solid blue line; Fig 3A). When top predators were excluded from biomass estimates, conservation gains peaked at intermediate gravity levels, and were higher in high gravity compared to low gravity (dotted blue line; Fig. 3A). Our results highlight how the expected differences between openly fished and marine reserves change along a gravity gradient, given a range of other social and environmental conditions that are controlled for within our model (SI Appendix; Fig. S1). Thus, differences in these trends are relative to average conditions, and individual reserves may demonstrate larger or smaller biomass buildup over time, which can vary by fish groups and/or families (e.g. 40).

In an effort to minimize costs to users, many marine reserves, particularly the large ones, tend to be placed in remote locations that experience low human pressure (24, 41). However, critics of marine reserves in remote locations suggest that limited resources could be better spent protecting areas under higher threat that could potentially yield greater conservation gains (23, 24, 42). Our results make explicit the types of benefits – and the limitations – to placing reserves in high versus low human impact locations. We found that for non-top predator reef fishes, substantial conservation gains can occur at even the highest gravity locations but that optimal gains are obtained at moderate gravity (Fig. 3A). Our results also show that low gravity marine reserves (and to a lesser extent low gravity fisheries restrictions) are critical to support the presence of top predators (Fig. 2). Yet, the expected conservation gains for top predators declines rapidly with gravity in both marine reserves and restricted areas (Fig. 3B). Our results illustrate a critical ecological tradeoff inherent in the placement of marine reserves: high gravity reserves can have the substantial conservation gains for fish biomass, yet they are unlikely to support key ecosystem functions like predation, even with high levels of compliance. This highlights the importance of having clear objectives for conservation initiatives and recognizing the tradeoffs involved (43, 44).

Our analysis does not allow us to uncover the mechanisms behind why we might observe the greatest differences in top predators between marine reserves and fished areas in low gravity locations. A plausible explanation is that top predators such as sharks are particularly vulnerable to fishing (17) and are exposed to some fishing even in the most remote fished areas, driven by the extremely high price for shark fins (shark fins can fetch US\$960/kg in wholesale markets (45); compared to only \$43/kg for parrotfish in European supermarkets (46)). Thus, even small amounts of fishing in remote openly fished areas may be depleting top predators, which creates a large difference between low gravity fished areas and marine reserves. This difference may diminish along the gravity because top predators tend to have large home range (37), and there were only small reserves in high gravity locations (SI Appendix; Fig S3), which may mean that existing high gravity reserves are not likely big enough to support the large home ranges of many predators (37, 47).

Successful conservation also depends on a range of social considerations (48). For example, gear restrictions often have greater support from local fishers (49) and are usually implemented

749
750
751
752
753
754
755
756
757
758
759
760
761
762
763
764
765
766
767
768
769
770
771
772
773
774
775
776
777
778
779
780
781
782
783
784
785
786
787
788
789
790
791
792
793
794
795
796
797
798
799
800
801
802
803
804
805
806
807
808
809
810
811
812
813
814
815
816

817 over greater reef areas than marine reserves. We show here
818 that there are conservation gains produced by gear restrictions,
819 though they are low relative to marine reserves (Fig. 3). Thus,
820 in locations where a lack of support makes establishing marine
821 reserves untenable, gear restrictions may still provide incremental
822 gains towards achieving some conservation goals (8), particularly
823 for specific fish groups and/or families (39).

824 As a supplemental analysis, we examined the conservation
825 gains for biomass of non-target species (SI Appendix; Fig. S1D,
826 S4). This supplemental analysis addresses whether the effects of
827 gravity on reef fish communities are from fishing or other impacts,
828 such as sedimentation or pollution. We found very different
829 patterns for non-target species compared to target species, sug-
830 gesting the relationship between target fish biomass and gravity
831 (SI Appendix; Fig. S1) is primarily driven by fishing pressure.

832 Overall, our results demonstrate that the capacity to not only
833 sustain reef fish biomass and the presence of top predators, but
834 also the potential to achieve conservation gains, may be highly
835 dependent on the level of human impact in the surrounding
836 seascape. It is therefore essential to consider the global context
837 of present and future human gravity in coral reef governance.
838 Consequently, we calculated gravity of human impacts for every
839 reef cell globally using a 10x10 km grid across the world's
840 coral reefs (Fig. 4). Critically, the distribution of gravity varies
841 substantially among regions, with the central and eastern Indo-
842 Pacific demonstrating lower gravity values. Even within a region,
843 there can be substantial variability in gravity values. For example,
844 the Central Indo-Pacific has highly contrasting gravity patterns,
845 with Southeast Asian reefs (Fig. 4 panel 3) generally showing
846 extremely high gravity values while Australian and Melanesian
847 reefs (Fig. 4 panel 4) are dominated by relatively low gravity
848 values.

849 The ways in which gravity will increase over time- and how the
850 impacts of gravity on reef systems can be reduced is of substantial
851 concern for coral reef governance. The potential benefits of
852 protecting locations that are currently remote could increase over
853 time as human populations and the accessibility of reefs change
854 (50). Demographic projections of high migration and fertility
855 rates in some countries suggest substantial increases in coastal
856 human populations in developing countries, where the majority
857 of coral reefs are located (5, 51-53). Development projects that
858 address high rates of fertility through improvements in women's
859 education, empowerment, and the expansion of family planning
860 opportunities have successfully reduced fertility rates (54, 55).
861 Such initiatives, when partnered with resource management, have
862 the potential to be beneficial to both people and reefs. Demo-
863 graphic changes such as increased migration in coastal areas are
864 also expected to be coupled with coastal development and road
865 building that will increase the accessibility of reefs. For example,
866 previously uninhabited areas have become more accessible, as
867 evidenced by China's recent Belt and Roads Initiative (BRI)
868 and island building enterprise in the South China Sea (56-58).
869 Investments in sustainable planning of coastal development and
870 road building could help to minimize unnecessary increases in
871 reef accessibility. Importantly, stemming increases in gravity is
872 only part of the potential solution space- it will also be important
873 to dampen the mechanisms through which gravity operates, such
874 that a given level of gravity can have a lesser impact on reef
875 systems (1). People's environmental behavior is fundamentally
876 driven by their social norms, tastes, values, practices, and pref-
877 erences (59), all of which can be altered by policies, media, and
878 other campaigns in ways that could change the local relationship
879 between gravity and reef degradation.

880 Gravity future directions

881 Our gravity index (see box 1 and methods) makes several
882 key assumptions that could potentially be refined in further ap-
883 plications. First, our application of gravity held friction constant

884 across each specific type of surface (i.e. all paved roads had the
885 same friction value). Future applications of more localized studies
886 could vary travel time to reflect the quality of road networks,
887 topographic barriers to access (such as cliffs), and the availability
888 of technology. Likewise, future applications could also aim to
889 incorporate local information about fishing fleet efficiency. Sec-
890 ondly, our adaptation of the gravity model (31) is unidirectional,
891 assuming a constant level of attraction from any reef (i.e. gravity
892 varies based on human population size, but not on the quality or
893 quantity of fish on a specific reef). Reefs with more fish, or higher
894 fish value, could be more attractive and exert a higher pull for
895 exploitation (60). Likewise, societal values and preferences can
896 also make certain fish more or less attractive. Our adaptation
897 of gravity was designed to examine the observed conditions of
898 reefs as a function of potential interactions with markets and
899 local settlements, so our modification of the concept for this ap-
900 plication was appropriate. However, future applications wishing
901 to predict where reefs may be most vulnerable might wish to
902 consider incorporating fish biomass or composition (i.e. potential
903 market price of reef fish) in the gravity equation. Third, our
904 database was not designed to look at ecological changes in a single
905 location over time. However, future applications could examine
906 whether ecological recovery in reserves (8) depends on the level
907 of gravity present. To this end, we provide a global dataset of
908 gravity for every reef pixel globally upon request (Methods).

909 We demonstrate that human impacts deplete reef fish stocks
910 and how certain types of management can mediate, but not
911 eliminate these pressures. In an era of increasing change, the
912 global network of marine reserves may not safeguard reef fish
913 communities from human impacts adequately enough to ensure
914 key ecological functions such as predation are sustained. Efforts
915 must be made to both reduce and dampen key drivers of change
916 (1, 61), while maintaining or improving the wellbeing of reef de-
917 pendent people. Importantly, we find evidence that both remote
918 and human-surrounded reserves can produce different types of
919 conservation gains. Ultimately, multiple forms of management
920 are needed across the seascape to sustain coral reef fishes and
921 the people that depend on them.

922 Materials and Methods

923 Scales of data

924 Our data were organized at three spatial scales: reef site (n=1798), reef
925 cluster (n=918), and nation/state (n=44).

926 i) Reef site (the smallest scale, which had an average of 2.4 surveys
927 (transects) - hereafter 'reef').

928 ii) Reef cluster (which had an average of 2.6 +/- 2.5 reef sites). We
929 clustered reefs together that were within 4km of each other, and used the
930 centroid to estimate reef cluster-level social and environmental covariates.
931 To define reef clusters, we first estimated the linear distance between all reef
932 sites, then used a hierarchical analysis with the complete-linkage clustering
933 technique based on the maximum distance between reefs. We set the cut-
934 off at 4 km to select mutually exclusive sites where reefs cannot be more
935 distant than 4 km. The choice of 4 km was informed by a 3-year study of the
936 spatial movement patterns of artisanal coral reef fishers, corresponding to
937 the highest density of fishing activities on reefs based on GPS-derived effort
938 density maps of artisanal coral reef fishing activities (62). This clustering
939 analysis was carried out using the R functions 'hclust' and 'cutree'.

940 iii) Nation/state (nation, state, or territory, which had an average of 50
941 +/- 79 reef clusters). A larger scale in our analysis was 'nation/state', which are
942 jurisdictions that generally correspond to individual nations (but could also
943 include states, territories, overseas regions), within which sites were nested
944 for analysis.

945 **Targeted Fish Biomass:** Reef fish biomass estimates were based on
946 visual counts in 5532 surveys collected from 2,233 reef sites. All surveys
947 used standard belt-transects, distance sampling, or point-counts, and were
948 conducted between 2004 and 2013. Where data from multiple years were
949 available from a single reef site, we included only data from the year closest
950 to 2010. Within each survey area, reef-associated fishes were identified to
951 species level, their abundance counted, and total length (TL) estimated, with
952 the exception of one data provider who measured biomass at the family
953 level. To make estimates of targeted biomass from these transect-level data
954 comparable among studies, we:

955 i) Retained families that were consistently studied, commonly targeted,
956 and were above a minimum size cut-off. Thus, we retained counts of >10cm
957 diurnally-active, non-cryptic reef fish that are resident on the reef (14 fami-

953 lies), excluding sharks and semi-pelagic species (Table S1). We calculated total
954 biomass of targeted fishes on each reef using standard published species-
955 level length-weight relationship parameters or those available on FishBase
956 (63). When length-weight relationship parameters were not available for a
957 species, we used the parameters for a closely related species or genus. For
958 comparison, we also calculated non-target fish biomass (SI Appendix; Table
959 S1).

ii) Directly accounted for depth and habitat as covariates in the model
(see "environmental conditions" section below);

iii) Accounted for differences among census methods by including each
census method (standard belt-transects, distance sampling, or point-counts)
as a covariate in the model.

iv) Accounted for differences in sampling area by including total sam-
pling area for each reef (m²) as a covariate in the model.

Top Predators: We examined the presence/absence of 8 families of
fish considered top predators (SI Appendix; Table S1). We considered pres-
ence/absence instead of biomass because biomass was heavily zero inflated.

Gravity: We first developed a gravity index for each of our reef sites
where we had *in situ* ecological data. We gathered data on both population
estimates and a surrogate for distance: travel time.

Population estimates

We gathered population estimates for each 1 by 1 km cell within a 500
km radius of each reef site using LandScan™ 2011 database. We chose a 500
km radius from the reef as a likely maximum distance fishing activities for
reef fish are likely to occur.

Travel time calculation

The following procedure was repeated for each populated cell within
the 500 km radius. Travel time was computed using a cost-distance algo-
rithm that computes the least 'cost' (in minutes) of travelling between two
locations on a regular raster grid. In our case, the two locations were the
centroid of the reef site and populated cell (i). The cost (i.e. time) of travelling
between the two locations was determined by using a raster grid of land
cover and road networks with the cells containing values that represent
the time required to travel across them (32, SI Appendix; Table S2), we
termed this raster grid a *friction-surface* (with the time required to travel
across different types of surfaces analogous to different levels of friction).
To develop the friction-surface, we used global datasets of road networks,
land cover, and shorelines:

- Road network data was extracted from the Vector Map Level 0 (VMap0)
from the National Imagery and Mapping Agency's (NIMA) Digital Chart of
the World (DCW®). We converted vector data from VMap0 to 1km resolution
raster.

- Land cover data were extracted from the Global Land Cover 2000 (64).
To define the shorelines, we used the GSHHS (Global Self-consistent,
Hierarchical, High-resolution Shoreline) database version 2.2.2.

These three friction components (road networks, land cover, and shore-
lines) were combined into a single friction surface with a Behrmann map
projection (an equal area projection). We calculated our cost-distance models
in R using the *accCost* function of the '*gdistance*' package. The function uses
Dijkstra's algorithm to calculate least-cost distance between two cells on the
grid taking into account obstacles and the local friction of the landscape
(65). Travel time estimates over a particular surface could be affected by the
infrastructure (e.g. road quality) and types of technology used (e.g. types of
boats). These types of data were not available at a global scale but could be
important modifications in more localized studies.

Gravity computation

To compute gravity, we calculated the population of cell and divided
that by the squared travel time between the reef site and the cell. We
summed the gravity values for each cell within 500 km of the reef site to get
the "total gravity" within 500 km. We used the squared distance (or in our
case, travel time), which is relatively common in geography and economics,
although other exponents can be used (31).

We also developed a global gravity index for each 10 x 10 km grid of
reef in the world (Box 1), which we provide as an open access dataset. The
procedure to calculate gravity was similar to above with the only difference
being in the precision of the location- the former was a single data point
(reef site), while the latter was a grid cell (reef cell). For the purpose of the
analysis, gravity was log-transformed and standardised.

We also explored various exponents (1, 2 and 3) and buffer sizes (50, 250
and 500 km) to build 9 gravity metrics. The metric providing the best model,
so with the lowest AIC, was that with a squared exponent for travel time and
a 500-km buffer (SI Appendix; Table S4).

Management: For each observation, we determined the prevailing type
of management, including: i) marine reserve- whether the site fell within
the borders of a no-take marine reserve. We asked data providers to further
classify whether the reserve had high or low levels of compliance. For this
analysis, we removed sites that were categorised as low compliance reserves
(n=233); ii) restricted fishing- whether there were active restrictions on gears
(e.g. bans on the use of nets, spearguns, or traps) or fishing effort (which
could have included areas inside marine protected areas that were not
necessarily no take); or iii) openly fished - regularly fished without effective
restrictions (SI Appendix; Table S5). To determine these classifications, we
used the expert opinion of the data providers, and triangulated this with a
global database of marine reserve boundaries (66). We also calculated size

(median= 113.6km², mean = 217516 km², SD= 304417) and age (median=
9, mean = 15.5 years, SD= 14.5) of the no-take portion of each reserve.
Reserve size was strongly related to our metric of gravity and could not
be directly included in the analysis. We conducted a supplemental analysis
where we separated reserves into small (<28km²) and large (>65 km²) based
on a natural break in the data to illustrate: 1) how biomass and the presence
of top predators might differ between small and large reserves; and 2) how
large reserves are absent in our sample in high gravity.

Other Social Drivers

To account for the influence of other social drivers that are thought
to be related to the condition of reef fish biomass, we also included the
following covariates in our model:

1. **Local Population Growth:** We created a 100 km buffer around each
site and used this to calculate human population within the buffer in 2000
and 2010 based on the Socioeconomic Data and Application Centre (SEDAC)
gridded population of the world database. Population growth was the
proportional difference between the population in 2000 and 2010. We chose
a 100 km buffer as a reasonable range at which many key human impacts
from population (e.g., land-use and nutrients) might affect reefs (67).

2. **Human Development Index (HDI):** HDI is a summary measure of
human development encompassing: a long and healthy life, being knowl-
edgeable, and having a decent standard of living. In cases where HDI values
were not available specific to the State (e.g. Florida and Hawaii), we used
the national (e.g. USA) HDI value.

3. **Population Size:** For each nation/state, we determined the size of
the human population. Data were derived mainly from national census
reports the CIA fact book ([https://www.cia.gov/library/publications/the-
world-factbook/rankorder/2119rank.html](https://www.cia.gov/library/publications/the-world-factbook/rankorder/2119rank.html)), and Wikipedia
(<https://en.wikipedia.org>). For the purpose of the analysis, population
size was log-transformed.

Environmental Drivers

1. **Depth:** The depth of reef surveys was grouped into the following
categories: <4m, 4-10m, >10m to account for broad differences in reef fish
community structure attributable to a number of inter-linked depth-related
factors. Categories were necessary to standardise methods used by data
providers and were determined by pre-existing categories used by several
data providers.

2. **Habitat:** We included the following habitat categories: i) Slope: The
reef slope habitat is typically on the ocean side of a reef, where the reef
slopes down into deeper water; ii) Crest: The reef crest habitat is the section
that joins a reef slope to the reef flat. The zone is typified by high wave
energy (i.e. where the waves break). It is also typified by a change in the
angle of the reef from an inclined slope to a horizontal reef flat; iii) Flat: The
reef flat habitat is typically horizontal and extends back from the reef crest
for 10's to 100's of meters; iv) Lagoon / back reef: Lagoonal reef habitats are
where the continuous reef flat breaks up into more patchy reef environments
sheltered from wave energy. These habitats can be behind barrier / fringing
reefs or within atolls. Back reef habitats are similar broken habitats where
the wave energy does not typically reach the reefs and thus forms a less
continuous 'lagoon style' reef habitat. Due to minimal representation among
our sample, we excluded other less prevalent habitat types, such as channels
and banks. To verify the sites' habitat information, we used the Millennium
Coral Reef Mapping Project (MCRMP) hierarchical data (68), Google Earth,
and site depth information.

3. **Productivity:** We examined ocean productivity for each of our sites in
mg C / m² / day (<http://www.science.oregonstate.edu/ocean.productivity/>).
Using the monthly data for years 2005 to 2010 (in hdf format), we imported
and converted those data into ArcGIS. We then calculated yearly average and
finally an average for all these years. We used a 100 km buffer around each
of our sites and examined the average productivity within that radius. Note that
ocean productivity estimates are less accurate for nearshore environments,
but we used the best available data. For the purpose of the analysis,
productivity was log-transformed.

4. **Climate stress:** We included an index of climate stress for corals, de-
veloped by Maina et al. (69), which incorporated 11 different environmental
conditions, such as the mean and variability of sea surface temperature.

Analyses

We first looked for collinearity among our covariates using bivariate
correlations and variance inflation factor estimates. This led to the exclusion
of several covariates (not described above): i) *Biogeographic Realm* (Tropical
Atlantic, western Indo-Pacific, Central Indo-Pacific, or eastern Indo-Pacific);
ii) *Gross Domestic Product* (purchasing power parity); iii) *Rule of Law* (World
Bank governance index); iv) *Control of Corruption* (World Bank governance
index); v) *Voice and Accountability* (World Bank governance index); vi)
Reef Fish Landings; vii) Tourism arrivals relative to local population; viii)
Sedimentation; and ix) *Marine Reserve Size*. Other covariates had correlation
coefficients 0.7 or less and Variance Inflation Factor scores less than 5
(indicating multicollinearity was not a serious concern). Care must be taken
in causal attribution of covariates that were significant in our model, but
demonstrated collinearity with candidate covariates that were removed
during the aforementioned process. Importantly, the covariate of interest
in this study, gravity, was not strongly collinear with candidate covariates
except reserve size (r=-0.8, t=3.6, df=104, p=0.0004).

To quantify the relationships between gravity and target fish biomass, we developed a general linear mixed model in R, using a log-normal distribution for biomass. To quantify the relationships between gravity and presence/absence of top predators, we developed a generalized linear mixed model with a Binomial family and a logit link function. For both models, we set reef cluster nested within nation/state as a random effect to account for the hierarchical nature of the data (i.e. reef sites nested in reef clusters, reef clusters nested in nations/states). We included an interaction between gravity and reserve age, as well as all the other social and environmental drivers and the sampling method and total sampling area as covariates. We also tested interactions between gravity and management and used AIC to select the most parsimonious model. For fish biomass, the interaction between gravity and reserve age had AIC values >2 lower than the interaction between gravity and management (and a combination of both interactions). For the top predator models, both interactions were within 2 AIC values, so we chose the interaction with reserve age for consistency. All continuous covariates were standardised for the analysis, and reserve age was then normalised such that non-reserves were 0 and the oldest reserves were 1. In summary, our models thus predicted target fish biomass or probability of top predators being observed at the reef site scale with an interaction between gravity and reserve age, while accounting within the random factors for two bigger scales at which the data were collected (reef cluster, and nation/state- see supplementary material), and key social and environmental characteristics expected to influence the biomass of reef fish (14). In addition to coefficient plots (SI Appendix; Fig. S1), we conducted a supplemental analysis of relative variable importance (SI Appendix; Table S4).

We ran the residuals from the models against size of the no-take areas of the marine reserves and no patterns were evident, suggesting it would explain no additional variance in the model. Trend lines and partial plots (averaged by site and nation/state) are presented in the manuscript figures (Fig. 1B-H, 2H). We plotted the partial effect of the relationship between gravity and protection on targeted fish biomass and presence of top predators (Figs. 1B-G, 2B-G) by setting all other continuous covariates to 0 (because they were all standardized and all categorical covariates to their most common category (i.e. 4-10m for depth, slope for habitat, standard belt transect for census method). For age of reserves, we set this to 0 for fished and restricted areas, and to the average age of reserves (15.5 years) for reserves.

To examine the expected conservation gains of different management strategies, we calculated: 1) the difference between the response of openly fished areas (our counterfactual) and high-compliance marine reserves to gravity; and 2) the difference between the response of openly fished areas and fisheries restricted areas to gravity. For ease of interpretation, we plotted conservation gains in kg/ha (as opposed to log[kg/ha], Fig. 3A). A log-normal (linear) model was used to develop the slopes of the biomass (a) fished,

(b) marine reserve, and (c) fisheries restricted areas, which results in the differences between (a) and (b) and between (a) and (c) being non-linear on an arithmetic scale (Fig 3A).

We plotted the diagnostic plots of the general linear mixed model to check that the model assumptions were not violated. To check the fit of the generalized linear mixed model, we used the confusion matrix (tabular representation of actual versus predicted values) to calculate the accuracy of the model which came to 79.2%.

To examine homoscedasticity, we checked residuals against fitted values. We checked our models against a null model, which contained the model structure (i.e. random effects), but no covariates. We used the null model as a baseline against which we could ensure that our full model performed better than a model with no covariate information. In all cases our models outperformed our null models by more than 2 AIC values, indicating a more parsimonious model.

All analyses were undertaken using R (3.43) statistical package.

Data access

A gridded global gravity data layer is freely available by request from the lead author. The ecological data used in this manuscript are owned by individual data providers. Although much of these data (e.g. NOAA CRED data and Reef Life Surveys) are already open-access, some of these data are governed by intellectual property arrangements and cannot be made open-access. Because the data are individually owned, we have agreed upon and developed a structure and process for those wishing access to the data. Our process is one of engagement and collaboration with the data providers. Anyone interested can send a short (1/2-1 page) proposal for use of the database that details the problem statement, research gap, research question(s), and proposed analyses to the PI and database administrator Joshua.cinner@jcu.edu.au, who will send the proposal to the data providers. Individual data providers can agree to make their data available or not. They can also decide whether they would like to be considered as a potential co-author if their data is used. The administrator will then send only the data which the providers have agreed to make available.

Acknowledgments

General: Thanks to J. Zamborian Mason and A. Fordyce for assistance with analyses and figures, and to numerous scientists who collected data used in the research. **Funding:** The ARC Centre of Excellence for Coral Reef Studies and The Pew Charitable Trusts funded working group meetings.

Author contributions: J.E.C. conceived the study with support from C.H, E.M., D.M, and C.M; C.H. managed the database; J.E.C, C.H., and E.M. implemented the analyses with input from M.A.M. and D.M.; J.E.C. led the manuscript. All other authors contributed data and made substantive contributions to the text. **Competing interests:** No competing interests.

- Hughes TP, et al. (2017) Coral Reefs in the Anthropocene. *Nature*.
- Pandolfi JM, et al. (2003) Global trajectories of the long-term decline of coral reef ecosystems. *Science* 301(5635):955-958.
- Hughes TP, et al. (2003) Climate change, human impacts, and the resilience of coral reefs. *Science* 301(5635):929-933.
- Teh LSL, Teh LCL, & Sumaila UR (2013) A global estimate of the number of coral reef fishers. *Plos One* 8(6):e65397.
- Mora C, et al. (2011) Global human footprint on the linkage between biodiversity and ecosystem functioning in reef fishes. *Plos Biol* 9(4):e1000606.
- Mora C, Chittaro PM, Sale PF, Kritzer JP, & Ludsin SA (2003) Patterns and processes in reef fish diversity. *Nature* 421(6926):933-936.
- Bellwood DR, Hughes TP, Folke C, & Nystrom M (2004) Confronting the coral reef crisis. *Nature* 429(6994):827-833.
- MacNeil MA, et al. (2015) Recovery potential of the world's coral reef fishes. *Nature* 520(7547):341-344.
- Hopf JK, Jones GP, Williamson DH, & Connolly SR (2016) Synergistic effects of marine reserves and harvest controls on the abundance and catch dynamics of a coral reef fishery. *Curr Biol* 26(12):1543-1548.
- Krueck NC, et al. (2017) Marine reserve targets to sustain and rebuild unregulated fisheries. *Plos Biol* 15(1):e2000537.
- Edgar GJ, et al. (2014) Global conservation outcomes depend on marine protected areas with five key features. *Nature* 506(7487):216-220.
- McClanahan TR, Marnane MJ, Cinner JE, & Kiene WE (2006) A comparison of marine protected areas and alternative approaches to coral-reef management. *Curr Biol* 16(14):1408-1413.
- Gill DA, et al. (2017) Capacity shortfalls hinder the performance of marine protected areas globally. *Nature* 543(7647):665-669.
- Cinner JE, et al. (2016) Bright spots among the world's coral reefs. *Nature* 535(7612):416-419.
- Williams ID, et al. (2015) Human, oceanographic and habitat drivers of Central and Western Pacific coral reef fish assemblages. *Plos One* 10(5):e0129407.
- Bozec YM, O'Farrell S, Bruggemann JH, Luckhurst BE, & Mumby PJ (2016) Tradeoffs between fisheries harvest and the resilience of coral reefs. *P Natl Acad Sci USA* 113(16):4536-4541.
- Dulvy NK, Freckleton RP, & Polunin NVC (2004) Coral reef cascades and the indirect effects of predator removal by exploitation. *Ecol Lett* 7(5):410-416.
- McClanahan TR, et al. (2011) Critical thresholds and tangible targets for ecosystem-based management of coral reef fisheries. *P Natl Acad Sci USA* 108(41):17230-17233.
- Pollnac R, et al. (2010) Marine reserves as linked social-ecological systems. *P Natl Acad Sci USA* 107(43):18262-18265.
- Bergseth BJ, Russ GR, & Cinner JE (2015) Measuring and monitoring compliance in no-take marine reserves. *Fish and Fisheries* 16(2):240-258.
- Graham NAJ & McClanahan TR (2013) The last call for marine wilderness? *Bioscience* 63(5):397-402.
- Cinner JE, et al. (2009) Linking social and ecological systems to sustain coral reef fisheries. *Curr Biol* 19(3):206-212.
- Pressey RL, Visconti P, & Ferraro PJ (2015) Making parks make a difference: poor alignment of policy, planning and management with protected-area impact, and ways forward. *Philos T R Soc B* 370(1681):20140280.
- Devillers R, et al. (2015) Reinventing residual reserves in the sea: are we favouring ease of establishment over need for protection? *Aquat Conserv* 25(4):480-504.
- Andrello M, et al. (2017) Global mismatch between fishing dependency and larval supply from marine reserves. *Nat Commun* 8.
- Harrison HB, et al. (2012) Larval export from marine reserves and the recruitment benefit for fish and fisheries. *Curr Biol* 22(11):1023-1028.
- Januchowski-Hartley FA, Graham NAJ, Cinner JE, & Russ GR (2013) Spillover of fish naivete from marine reserves. *Ecol Lett* 16(2):191-197.
- Ravenstein EG (1889) The laws of migration. *Journal of the royal statistical society* 52(2):241-305.
- Dodd SC (1950) The intertactance hypothesis: a gravity model fitting physical masses and human groups. *American Sociological Review* 15(2):245-256.
- Bergstrand JH (1985) The gravity equation in international trade: some microeconomic foundations and empirical evidence. *The review of economics and statistics* 67(3):474-481.
- Anderson JE (2011) The gravity model. *Annual Review of Economics* 3(1):133-160.
- Maire E, et al. (2016) How accessible are coral reefs to people? A global assessment based on travel time. *Ecol Lett* 19(4):351-360.
- Januchowski-Hartley FA, Graham NAJ, Cinner JE, & Russ GR (2015) Local fishing influences coral reef fish behavior inside protected areas of the Indo-Pacific. *Biol Conserv* 182:8-12.
- Gil MA & Hein AM (2017) Social interactions among grazing reef fish drive material flux in a coral reef ecosystem. *Proceedings of the National Academy of Sciences* 114(18):4703-4708.
- Bergseth BJ, Williamson DH, Russ GR, Sutton SG, & Cinner JE (2017) A social-ecological approach to assessing and managing poaching by recreational fishers. *Front Ecol Environ* 15(2):67-73.
- Ward-Paige CA, et al. (2010) Large-Scale Absence of Sharks on Reefs in the Greater-

1225	Caribbean: A Footprint of Human Pressures. <i>Plos One</i> 5(8):e11968.	
1226	37. Krueck Nils C, et al. (2017) Reserve Sizes Needed to Protect Coral Reef Fishes. <i>Conservation Letters</i> 0(0): 1–9.	1294
1227		1295
1228	38. Christie P, et al. (2017) Why people matter in ocean governance: Incorporating human dimensions into large-scale marine protected areas. <i>Mar Policy</i> 84:273-284.	1296
1229	39. Campbell Stuart J, Edgar Graham J, Stuart-Smith Rick D, Soler G, & Bates Amanda E (2017) Fishing-gear restrictions and biomass gains for coral reef fishes in marine protected areas. <i>Conservation Biology</i> 32(2):401-410.	1297
1230		1298
1231	40. McClanahan TR, Graham NAJ, Calnan JM, & MacNeil MA (2007) Toward pristine biomass: Reef fish recovery in coral reef marine protected areas in Kenya. <i>Ecol Appl</i> 17(4):1055-1067.	1299
1232		1300
1233	41. O'Leary BC, et al. (2018) Addressing Criticisms of Large-Scale Marine Protected Areas. <i>Bioscience</i> 68(5):359-370.	1301
1234		1302
1235	42. Ferraro PJ & Pressey RL (2015) Measuring the difference made by conservation initiatives: protected areas and their environmental and social impacts Introduction. <i>Philos T R Soc B</i> 370(1681):20140270.	1303
1236		1304
1237	43. Beger M, et al. (2015) Integrating regional conservation priorities for multiple objectives into national policy. <i>Nat Commun</i> 6:8208.	1305
1238		1306
1239	44. Boon PY & Beger M (2016) The effect of contrasting threat mitigation objectives on spatial conservation priorities. <i>Mar Policy</i> 68:23-29.	1307
1240		1308
1241	45. Clark P (2014) Shark fin sales in China take a dive. <i>Financial Times</i> August 6.	1309
1242	46. Thyresson M, Nyström M, & Crona B (2011) Trading with Resilience: Parrotfish Trade and the Exploitation of Key-Ecosystem Processes in Coral Reefs. <i>Coastal Management</i> 39(4):396-411.	1310
1243		1311
1244	47. Green AL, et al. (2014) Designing Marine Reserves for Fisheries Management, Biodiversity Conservation, and Climate Change Adaptation. <i>Coastal Management</i> 42(2):143-159.	1312
1245	48. Bennett NJ, et al. (2017) Conservation social science: Understanding and integrating human dimensions to improve conservation. <i>Biol Conserv</i> 205:93-108.	1313
1246		1314
1247	49. McClanahan TR & Abunge CA (2016) Perceptions of fishing access restrictions and the disparity of benefits among stakeholder communities and nations of south-eastern Africa. <i>Fish and Fisheries</i> 17(2):417-437.	1315
1248		1316
1249	50. Watson RA, et al. (2015) Marine foods sourced from farther as their use of global ocean primary production increases. <i>Nat Commun</i> 6.	1317
1250		1318
1251	51. Gerland P, et al. (2014) World population stabilization unlikely this century. <i>Science</i> 346(6206):234-237.	1319
1252		1320
1253	52. Mora C (2014) Revisiting the environmental and socioeconomic effects of population growth: A fundamental but fading issue in modern scientific, public, and political circles. <i>Ecol Soc</i> 19(1):38.	1321
1254		1322
1255	53. Mora C (2015) Perpetual struggle for conservation in a crowded world and the needed paradigm shift for easing ultimate burdens. <i>Ecology of Fishes on Coral Reefs</i> , ed Mora C (Cambridge University Press, Cambridge), pp 289-296.	1323
1256		1324
1257		1325
1258		1326
1259		1327
1260		1328
1261		1329
1262		1330
1263		1331
1264		1332
1265		1333
1266		1334
1267		1335
1268		1336
1269		1337
1270		1338
1271		1339
1272		1340
1273		1341
1274		1342
1275		1343
1276		1344
1277		1345
1278		1346
1279		1347
1280		1348
1281		1349
1282		1350
1283		1351
1284		1352
1285		1353
1286		1354
1287		1355
1288		1356
1289		1357
1290		1358
1291		1359
1292		1360