

Landslides (2019) 16:125–126
DOI 10.1007/s10346-018-1094-x
Published online: 14 December 2018
© Springer-Verlag GmbH Germany
part of Springer Nature 2018

Long-qi Li · Neng-pan Ju · Shuai Zhang · Xiao-xue Deng · Daichao Sheng

Correction to: Seismic wave propagation characteristic and its effects on the failure of steep jointed anti-dip rock slope

Correction to: Landslides

<https://doi.org/10.1007/s10346-018-1071-4>

The published version of this article, unfortunately, contained error. A compass went unconverted in the upper-right corner of Fig. 1. Given in this article is the correct image. The original article has been corrected.

The online version of the original article can be found at <https://doi.org/10.1007/s10346-018-1071-4>

L.-q. Li · N.-p. Ju (✉) · **S. Zhang · X.-x. Deng**

State Key Laboratory of Geohazard Prevention and Geoenvironment Protection,
Chengdu University of Technology,
Chengdu, 610059, China
Email: 287820171@qq.com

L.-q. Li

e-mail: lilongqi1986@gmail.com

S. Zhang

e-mail: 1164553606@qq.com

X.-x. Deng

e-mail: 975640886@qq.com

L.-q. Li · D. Sheng

ARC Centre of Excellence for Geotechnical Science and Engineering,
The University of Newcastle,
Callaghan, NSW 2308, Australia

D. Sheng

e-mail: daichao.sheng@newcastle.edu.au

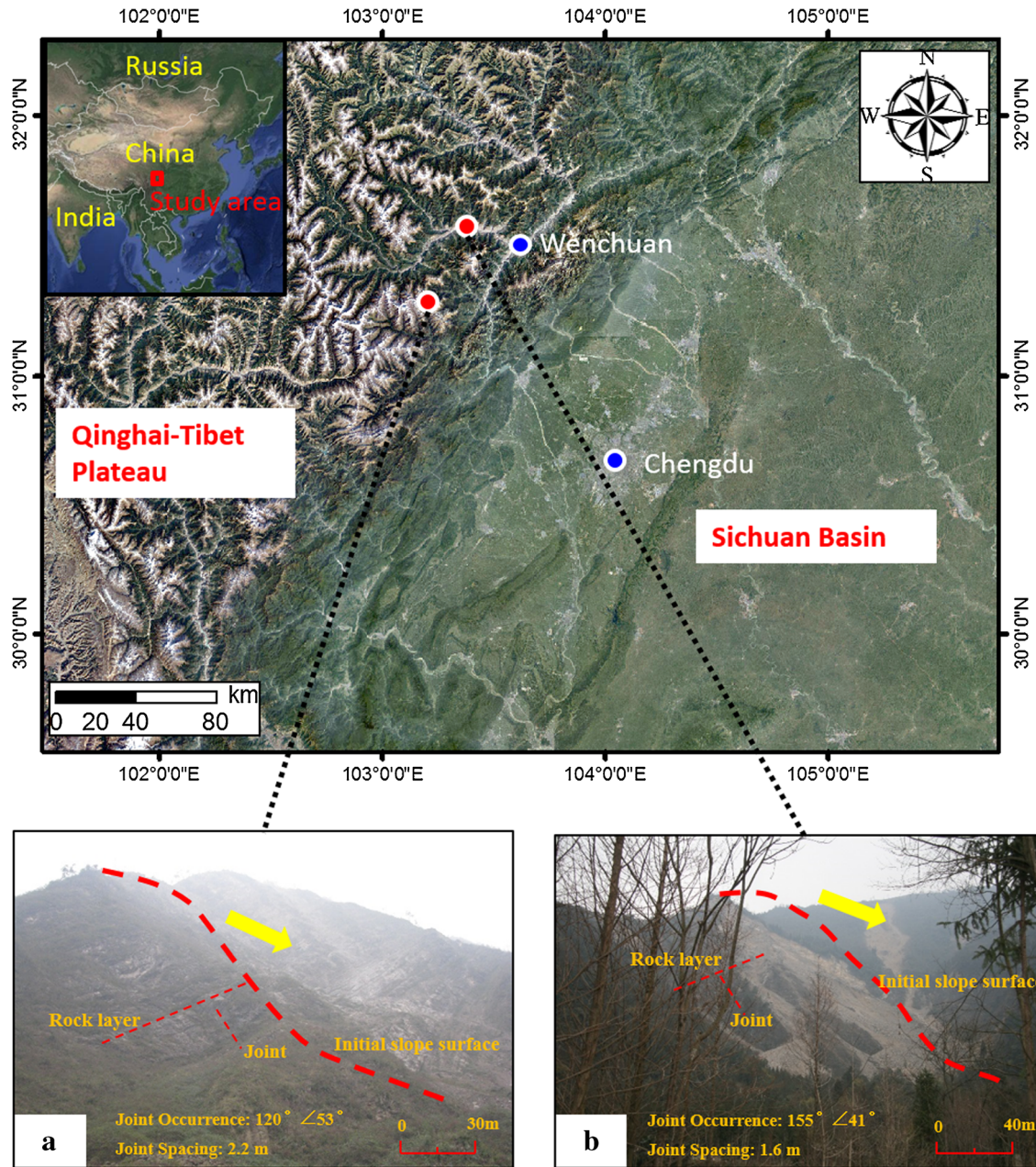


Fig. 1 Two kinds of anti-dip rock slope failure cases: a Jianshan landslide. b Heifengkou landslide