

# **Ben Hewett**

**Staff Reference:** – 244

**FTE:** 1.0

**FOR:** 1201

**Level:** B

**Status:** Employed

**Function:** Teaching and Research

# 275 George Street

## Background

275 George Street (Brisbane) is a recently completed commercial & retail building of approximately 40,000 square metres. The project consists of a tower, an extensive podium and public domain. Design began in late 2005, and construction was completed in September 2009.

## Contribution

My contribution to the project was as lead Design Architect. As Associate Director with Crone Partners Architecture Studios (the practice responsible) I lead the design team for the project from first concept stages through design development. I dealt directly with the client to understand and develop the brief; coordinated a variety of consultants to meet the design objectives for the project; and liaised directly with relevant authorities to meet controls and regulations.

## Significance

The research focus for the project develops the public domain as integral to the development. The site is immediately adjacent to Brisbane City Hall, and has three street frontages. In providing multiple entries to multiple buildings, with public through-site access, a porous development is created that blurs the distinction between public domain and corporation control. This approach is not evident in the typical Developer funded, speculative commercial project. As such, the project is a direct contribution to the amenity of the city.

Careful consideration of the project's relationship to neighbouring context (scale, proportions, visual and physical connections) further integrated the new building into the city fabric.

The project was completed ahead of schedule and under budget, demonstrating important urban design objectives can be met whilst satisfying client financial requirements.

## SUPPORTING EVIDENCE

(Press, invitations, reviews, photographs of exhibitions /installations/artworks etc. Evidence of public exposure of work.)

The project has been completed – address 275 George St., Brisbane.

Selected web sites on which the project has been referenced:

<http://skyscraperpage.com/cities/?buildingID=57453>

<http://www.realcommercial.com.au/commercial-real-estate/5325457>

<http://www.propertyoz.com.au/qld/Article/NewsDetail.aspx?p=16&id=2332>

<http://www.realcommercial.com.au/commercial-real-estate/5641371>

Architect

<http://www.cronepartners.com/crone-projectpool/project-details.asp?cat=CML&prj=14>

Client

<http://charterhall.com.au/default.aspx?page=commercialdisplay&cid=109>

Consultants

<http://www.ndy.com/projects/275-george-street-brisbane>

## IMAGES OF EXHIBITION / WORK

(Completed building)



View of completed building from corner of George and Adelaide St, Brisbane

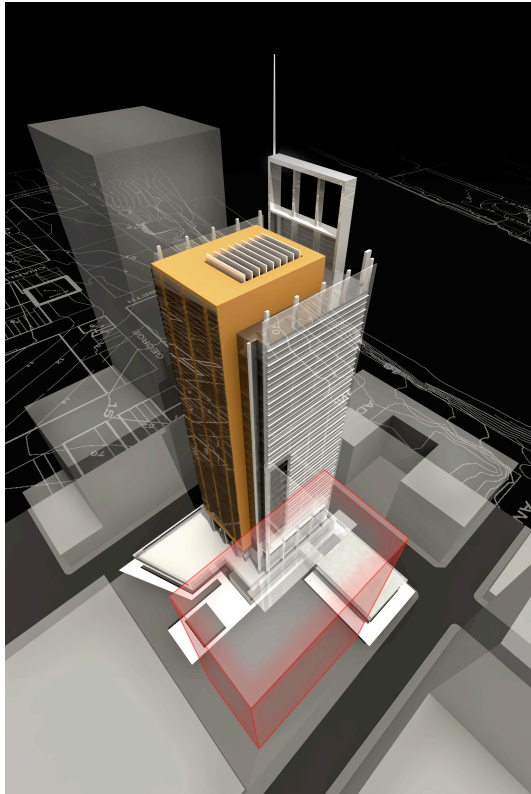


corner of George and Adelaide St.



along Adelaide St.





early concept image, bird's eye view



early concept image, Adelaide St.