

## Cost-effectiveness of guideline-endorsed treatments for low back pain: a systematic review

Chung-Wei Christine Lin · Marion Haas ·  
Chris G. Maher · Luciana A. C. Machado ·  
Maurits W. van Tulder

Received: 12 December 2010 / Accepted: 19 December 2010 / Published online: 13 January 2011  
© The Author(s) 2011. This article is published with open access at Springerlink.com

**Abstract** Healthcare costs for low back pain (LBP) are increasing rapidly. Hence, it is important to provide treatments that are effective and cost-effective. The purpose of this systematic review was to investigate the cost-effectiveness of guideline-endorsed treatments for LBP. We searched nine clinical and economic electronic databases and the reference list of relevant systematic reviews and included studies for eligible studies. Economic evaluations conducted alongside randomised controlled trials investigating treatments for LBP endorsed by the guideline of the American College of Physicians and the American Pain Society were included. Two independent reviewers screened search results and extracted data. Data extracted included the type and perspective of the economic evaluation, the treatment comparators, and the relative cost-

effectiveness of the treatment comparators. Twenty-six studies were included. Most studies found that interdisciplinary rehabilitation, exercise, acupuncture, spinal manipulation or cognitive-behavioural therapy were cost-effective in people with sub-acute or chronic LBP. Massage alone was unlikely to be cost-effective. There were inconsistent results on the cost-effectiveness of advice, insufficient evidence on spinal manipulation for people with acute LBP, and no evidence on the cost-effectiveness of medications, yoga or relaxation. This review found evidence supporting the cost-effectiveness of the guideline-endorsed treatments of interdisciplinary rehabilitation, exercise, acupuncture, spinal manipulation and cognitive-behavioural therapy for sub-acute or chronic LBP. There is little or inconsistent evidence for other treatments endorsed in the guideline.

---

C.-W. C. Lin (✉) · C. G. Maher  
The George Institute for Global Health and Sydney Medical  
School, The University of Sydney, PO Box M201,  
Missenden Rd, Sydney, NSW 2050, Australia  
e-mail: clin@george.org.au

M. Haas  
Centre for Health Economics Research and Evaluation,  
The University of Technology, PO Box 123, Broadway,  
Sydney, NSW 2007, Australia

L. A. C. Machado  
Departamento de Fisioterapia e Terapia Ocupacional,  
Universidade Federal de Minas Gerais, Av Antônio Carlos 6627,  
Pampulha, Belo Horizonte, MG 31270-901, Brazil

M. W. van Tulder  
Department of Health Sciences and the EMGO Institute  
for Health and Care Research, Faculty of Earth and Life  
Sciences, VU University, de Boelelaan 1085,  
1081 HV Amsterdam, The Netherlands

**Keywords** Low back pain · Cost-effectiveness analysis ·  
Systematic review

### Introduction

Low back pain (LBP) is a common health condition which affects most adults at some point during their lifetime [1]. For most patients in primary care, the source of symptoms cannot be specified and the patient receives the label *non-specific LBP* [2]. The exceptions are those with back pain associated with radiculopathy or spinal stenosis [3] and the rare patients whose LBP can be attributed to a disease or condition such as fracture, tumour or infection [4]. Recently, the American College of Physicians and the American Pain Society published a joint clinical guideline which recommended the following treatments for non-specific LBP [3]:

- Provide evidence-based information on prognosis, advise to remain active, provide information about effective self-care options (referred to as advice for the rest of the paper)
- In addition, consider the use of medications with proven benefits
- For patients who do not improve, consider the addition of spinal manipulation for acute LBP
- For patients who do not improve, consider the addition of interdisciplinary rehabilitation, exercise, acupuncture, massage, spinal manipulation, yoga, cognitive-behavioural therapy or relaxation for sub-acute or chronic LBP

These recommendations are largely in line with other international guidelines [5] and are derived from the vast amount of research regarding the effectiveness of treatments for LBP. For example, the latest issue of The Cochrane Library contains over 30 Cochrane systematic reviews of interventions for LBP [6]. In contrast, until the 2009 British guideline [7], LBP guidelines contained little information on the cost-effectiveness of treatments. This was probably due to the low number of studies available to the developers of the early guidelines. The low number of available studies, together with methodological limitations of the studies and the heterogeneity of the studies, limited any conclusive evidence regarding the cost-effectiveness of interventions for LBP [8, 9].

LBP incurs substantial treatment and loss of productivity costs internationally [10]. In the United States, healthcare costs among people with back pain increased by 65% from 1997 to 2005, more rapidly than healthcare costs among people without back pain and the overall healthcare costs [11]. Given that the guidelines considered a range of interventions to be effective, the efficiency of treatment will be improved if their relative cost-effectiveness is also considered. As the number of published economic evaluations of interventions for LBP is increasing, it may now be possible to consider evidence of cost-effectiveness when making recommendations about treatment. The purpose of this paper is to investigate the cost-effectiveness of guideline-endorsed treatments for non-specific LBP.

## Methods

### Data sources and searches

We conducted a systematic search for economic evaluations (i.e. cost-minimization, cost-effectiveness, cost-utilization or cost-benefit analysis) [12] conducted alongside randomised controlled trials in adults with non-specific LBP. Treatments endorsed in the clinical practice guideline

of the American College of Physicians and the American Pain Society were eligible for inclusion (i.e. advice, medication, spinal manipulation for acute LBP, and interdisciplinary rehabilitation, exercise, acupuncture, massage, spinal manipulation, yoga, cognitive-behavioural therapy or relaxation for sub-acute or chronic LBP) [3], except when these treatments were implemented after spinal surgery. To be included, studies had to relate the costs of the interventions to the effects of the interventions, for example by reporting an incremental cost-effectiveness ratio (ICER). There was no language restriction.

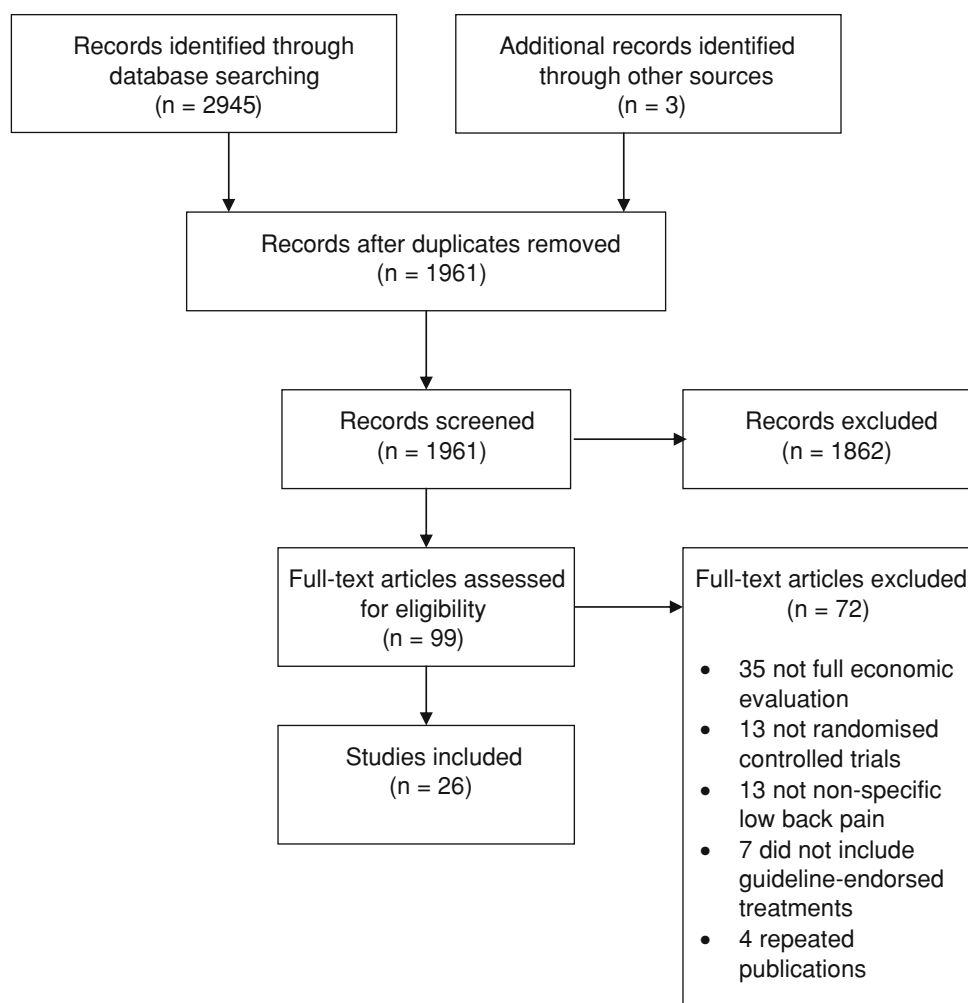
We searched six clinical (Medline, EMBASE, CINAHL, Cochrane Central Register of Controlled Trials, PsychINFO and PEDro) and three economic (EconLit, NHS EED and EURONHEED) databases from inception to 1 June 2010. The reference list of relevant systematic reviews and included studies was also searched. Search terms were derived from the search strategies of the Cochrane Back Review Group ([http://www.cochrane.iwh.on.ca/pdfs/CBRG\\_searchstrat\\_Sept08.pdf](http://www.cochrane.iwh.on.ca/pdfs/CBRG_searchstrat_Sept08.pdf)) and the British National Health Services Economic Evaluation Database (NHS EED) (<http://www.york.ac.uk/inst/crd/nhseedfaq02.htm>). As an example, the complete search strategy for EMBASE is in [Appendix](#).

### Study selection and quality assessment

Each review process (screening, risk of bias assessment and data extraction) was conducted by two independent reviewers, with differences resolved first in discussion, and then (if necessary) by arbitration by a third, independent reviewer. In selecting eligible studies from the search results, first the titles, then abstracts (if available), and then full papers were screened. For the included studies, we used the criteria from the Cochrane Back Review Group [13, 14] to assess the risk of bias of the trial design, and the Consensus on Health Economic Criteria (CHEC-list) [15] to assess the methodological quality of the economic evaluation. Studies that scored 6 or more out of a total of 11 on the risk of bias assessment were considered as having a low risk of bias [16]. All publications related to the included studies (e.g. published protocol or clinical outcomes paper) were used to inform the risk of bias assessment and data extraction (see [Appendix](#)).

### Data extraction, synthesis and analysis

Data were extracted using a customized data extraction sheet, and included: the type and perspective of the economic evaluation, treatment comparators, year/s, country and currency of the study, and results of the relative cost-effectiveness of the treatment comparators, which was the primary outcome of interest. As we could not locate an agreed cost-effectiveness threshold for the United States,

**Fig. 1** Flow of study

we used the threshold set by the United Kingdom (UK)’s National Institute for Health and Clinical Excellence (NICE) as an indicator for cost-effectiveness [17]. That is, if a treatment had an ICER lower than £20,000–£30,000 per quality-adjusted life-years (QALY) gained, the treatment was deemed as relatively cost-effective compared to an alternate treatment. Where a treatment incurred significantly lower costs and was statistically significantly more effective compared to an alternate treatment, the treatment was considered as “dominant”.

## Results

### Characteristics of included trials

A total of 26 studies were included after screening the 1961 records found in the search (Fig. 1). Results of two separate studies [18, 19] were reported in one paper [20]. These studies had almost identical design features so are referred to as “Strong et al.” in the current paper. For two of the

included studies, results of the one- and two-year follow-up were published separately [21–24]. Most studies conducted a cost-effectiveness and/or cost-utility analysis. One study conducted a cost-effectiveness analysis as well as a cost-benefit analysis [25]. Four other studies conducted a cost-benefit analysis [26–29] and two studies conducted a cost-minimization analysis [30, 31]. One study did not clearly state the type of economic evaluation undertaken, but we consider this to be a cost-effectiveness analysis due to the outcomes reported [21, 22].

Most studies recruited participants with at least 4–6 weeks (sub-acute) or greater than 12 weeks (chronic) of LBP. The only exceptions were two studies which recruited participants of a mixed duration of symptoms [30, 32] two which did not specify the duration of symptoms [20], and one which recruited participants sick listed for less than 2 weeks due to LBP [31]. Most studies were conducted in the UK [32–40] or other European countries [21–24, 26–29, 31, 41–45]; three studies were conducted in the United States [20, 30] and two in Canada [25, 46]. All studies were published in English.

### Risk of bias of the trial design

Just over half ( $n = 13$ ) of the studies had a low risk of bias. Five of the studies did not report adequate randomization procedures [19, 20, 40, 41], nine did not have adequate allocation concealment [18–20, 23, 24, 29, 31, 39, 41, 44, 46] and none of the studies used assessor blinding (Table 1).

### Quality of the economic evaluation

Eleven studies scored 17 or more out of 19 on the CHEC-list. Seven studies did not state the economic perspective adopted [21, 22, 29–32, 35, 41]. An incremental cost-effectiveness analysis was conducted in all but 2 of the 19 cost-effectiveness or cost-utility studies [23, 24, 41]. Three of the nine studies which had a follow-up period of greater than 1 year did not use discounting [23–25, 30]. Other methodological issues are outlined in the following sections describing the evidence for each treatment (Table 1).

Advice (provide evidence-based information on prognosis, advise to remain active, provide information about effective self-care options)

A total of nine studies were included (Table 2). Six studies compared advice to another treatment [20–22, 27, 38, 46], and three compared adding another treatment to advice with advice alone [23, 24, 26, 36]. Regardless of the comparison and the economic perspective adopted, results regarding the cost-effectiveness of advice were inconsistent across the studies (Table 2). Four studies suggested that advice may be more cost-effective than treatments received in primary care [21, 22, 27] or a book on back pain care [20], but other studies reported a cost-effectiveness ratio or cost-benefit outcome which favoured adding naturopathic care [46], graded activity [26], or manipulation and stabilizing exercises [23, 24] over advice alone, or physiotherapy over advice [38]. In a study comparing adding manipulation and exercises to advice alone [23, 24], it is unclear why the reported cost-effectiveness ratio was positive for pain but negative for disability, given that costs were identical and the direction of benefits was the same for both outcomes.

There were methodological issues regarding the identification and measurement of costs in five of the eight studies. One study [46] undertook their analysis from the societal perspective, but did not collect the costs of visits to doctors, or secondary or tertiary care. It was unclear why some of the costs reported had a negative value, and their follow-up period (6 months) may be too short to fully capture the economic consequences of sub-acute or chronic LBP. Two studies [20] undertook their analysis from the

**Table 1** Risk of bias and methodological quality assessment using the Cochrane Back Review Group criteria [13, 14] and the Consensus Health Economic Criteria (CHEC-list) [15], respectively

	Risk of bias score (/11)	CHEC-list (/19) <sup>a</sup>
Critchley et al. [33]	7	19 (0)
Goossens et al. [41]	2	14 (1)
Herman et al. [46]	6	17 (1)
Hlobil et al. [26]	7	15 (2)
Hollinghurst et al. [34]	7	17 (1)
Johnson et al. [35]	7	12 (1)
Karjalainen et al. [21, 22]	8	13 (0)
Kominski et al. [30]	5	11 (4)
Lamb et al. [36]	7	15 (1)
Loisel et al. [25]	5	14 (0)
Molde Hagen et al. [27]	7	12 (1)
Niemisto et al. [23, 24]	6	16 (0)
Ratcliffe et al. [37]	5	19 (0)
Rivero-Arias et al. [38]	8	18 (1)
Rivero-Arias et al. [39]	5	18 (0)
Schweikert et al. [44]	5	17 (1)
Seferlis et al. [31]	4	7 (5)
Skouen et al. [28]	5	14 (1)
Smeets et al. [42]	8	18 (1)
Strong et al. [20]	4	13 (1)
Torstensen et al. [29]	6	9 (2)
UK BEAM Trial Team [40]	5	17 (1)
Van der Roer et al. [43]	6	18 (1)
Whitehurst et al. [32]	6	17 (1)
Witt et al. [45]	4	13 (1)

Studies with a risk of bias score of 6 or more were considered to have a low risk of bias [16]

<sup>a</sup> The number of items that were not applicable from the CHEC-list is in parentheses. For example, performing an incremental cost-effectiveness analysis (item 13) was not applicable for cost-minimization or cost-benefit analysis, and discounting (item 14) was not applicable for studies with a follow-up of 1 year or less

health insurer's perspective but excluded the costs of inpatient care. Both studies which conducted a cost-benefit analysis [26, 27] had a 3-year follow-up, but collected only the costs incurred in the first year. One of these studies did not state the methods used to value the costs [27].

In addition, consider the use of medications with proven benefits

No study compared the cost-effectiveness of any medication in managing LBP. This included the first-line recommendation of acetaminophen and non-steroidal anti-inflammatory drugs, more potent analgesics such as opioids or tramadol, and herbal therapies.

**Table 2** The cost-effectiveness of “advice” (provide evidence-based information on prognosis, advise to remain active, provide information about effective self-care options)

Study ID	Comparative treatments	Details of economic evaluation	Results of economic evaluation
Herman et al. [46]	Advice (advice and back booklet) Naturopathic care (acupuncture, relaxation) and back booklet	Type: CEA/CUA Perspective: societal, employer and patient Setting: Canada, 2005 Follow-up: 6 months	ICER for naturopathic care compared to advice: QALY (SF-6D) = naturopathic care and back booklet dominant (i.e. incurred lower costs and more effective) from societal and patient’s perspective Absenteeism = 154 (2005 USD) per absentee day avoided from employer’s perspective
Hlobil et al. [26]	Advice Advice plus graded activity using cognitive-behavioural principles	Type: CBA Perspective: employer Setting: The Netherlands, 1999–2000 Follow-up: 1 year for costs, 3 years for other outcomes	Mean cost benefit = 999 (1999 Euro) favouring advice plus graded activity (95% CI –1,073 to 3,115)
Lamb et al. [36]	Group cognitive behavioural intervention plus advice Advice	Type: CEA/CUA Perspective: healthcare sector Setting: United Kingdom, price year 2008 Follow-up: 1 year	ICER for Group cognitive behavioural intervention plus advice = 1,786 (2008 GBP) per QALY gained (EQ-5D)
Karjalainen et al. [21, 22]	GP care GP care plus advice (advice, education, exercise)	Type and perspective: not stated Setting: Finland 1998–2000 Follow-up: 24 months	No ICER conducted, but advice incurred lower costs and was more effective in proving daily symptoms, pain bothersomeness, satisfaction, days on sick leave (i.e. dominant).
Molde Hagen et al. [27]	Advice (advice and simple exercises) Usual care in primary care	Type: CBA Perspective: societal Setting: Norway, price year 1995 Follow-up: 1 year for costs, 3 years for other outcomes	Mean cost benefit = 3,497 (1995 USD) favouring advice
Niemisto et al. [23, 24]	Advice (advice, education and simple exercises) Advice plus manipulation and stabilizing exercises	Type: CEA/CUA Perspective: societal Setting: Finland, study initiated in 1999 Follow-up: 2 years	ICER for advice plus manipulation and stabilizing exercises compared to advice [mean (95% CI)]: Pain = 512 (2002 USD) per 1 point gained on a 100-point scale (77–949) Disability (Oswestry) = –78 (2002 USD) per 1 point gained on a 100-point scale (–655 to 499)
Rivero-Arias et al. [38]	Advice Physiotherapy	Type: CEA/CUA Perspective: unspecified for ICER Setting: United Kingdom, 1997–2001 Follow-up: 1 year	ICER for physiotherapy compared to advice: 3,010 (2004 GBP) per QALY gained (EQ-5D)
Strong et al. [20] for Moore et al. [18]	Book on back pain care Advice (psychologist-led group education sessions)	Type: CEA/CUA Perspective: health insurer Setting: United States, 1996–1997 Follow-up: 1 year	ICER for advice compared to book [mean (95% CI)]: 6.13 (USD, price year not reported) per one low-impact back pain days (1.48–21.14)

**Table 2** continued

Study ID	Comparative treatments	Details of economic evaluation	Results of economic evaluation
Strong et al. [20] for von Korff et al. [19]	Book on back pain care Advice (layperson-led group education sessions)	Type: CEA/CUA Perspective: health insurer Setting: United States, 1996–1997 Follow-up: 1 year	ICER for advice compared to book [mean (95% CI)]: 9.70 (USD, price year not reported) per one low-impact back pain days (−45.45 to 78.86)

The study included other comparison groups. Only data from the specified groups were included

*CBA* cost-benefit analysis, *CEA* cost-effectiveness analysis, *CUA* cost-utility analysis, *GBP* British pounds, *GP care* care provided by a general practitioner or a primary care physician, *ICER* incremental cost-effectiveness ratio, in cost per 1 unit of effect gained, *LBP* low back pain, *QALY* quality-adjusted life-years, *USD* United States dollars

For patients who do not improve, consider the addition of spinal manipulation for acute LBP

Only one study investigated the cost-effectiveness of spinal manipulation in people with acute LBP [31]. Results of this cost-minimization study showed that while spinal manipulation was not the cheapest treatment option, the differences in costs over 1 year compared to care provided by a general practitioner (GP care) or exercise appeared small (total cost in Swedish crowns, price year not stated, for spinal manipulation = 49,076, GP care = 50,834 and exercise = 45,423). However, there was no formal statistical comparison and this study had incomplete cost identification (only the costs of study treatment, investigations and operations were collected as the direct costs).

For patients who do not improve, consider the addition of interdisciplinary rehabilitation, exercise, acupuncture, massage, spinal manipulation, yoga, cognitive-behavioural therapy or relaxation for sub-acute or chronic LBP

Fifteen studies investigated the cost-effectiveness of interdisciplinary rehabilitation, exercise, spinal manipulation or cognitive-behavioural therapy. These interventions were compared to conventional physiotherapy [29, 32, 33, 43], GP care [25, 28, 30, 35], spinal surgery [29] or walking [39], or as an additional treatment to advice [23, 24, 26], GP care [34, 36, 40] or inpatient rehabilitation [44]. Regardless of the comparisons and the perspectives adopted, all but two studies [30, 32] found that these interventions were cost-effective compared to the treatment alternatives (Table 3). In particular, Schweikert et al. [44] found that adding cognitive-behavioural therapy to inpatient rehabilitation dominated over inpatient rehabilitation alone (ICER = −126,731 in 2001 Euro per QALY gained), and Torstensen et al. [29] found that medical exercise therapy dominated over walking (cost benefit = 906,732 in Norwegian Kroner, price year not stated).

However, Schweikert et al. [44] had a follow-up of 6 months, which may be too short to adequately measure the economic consequences of chronic LBP. Torstensen et al. [29] did not specify the perspective of the economic evaluation. Given that people in the walking group incurred no costs, it is likely that this study conducted the economic evaluation from a narrow perspective, including the costs of the study treatment only.

Four studies compared interdisciplinary rehabilitation, exercise, spinal manipulation and cognitive-behavioural therapy to each other. Critchley et al. [33] found that a pain management programme using cognitive-behavioural principles was likely to be more cost-effective compared to exercise from the healthcare sector's perspective. Smeets et al. [42] found that, from a societal perspective, the combination of exercise with graded activity and problem solving was not cost-effective compared to exercise or graded activity and problem solving alone (e.g. ICER for exercise compared to combined group = 35,060 in 2003 Euro per QALY gained, ICER for graded activity and problem solving compared to combined group = dominant). In contrast, combining both manipulation and exercise with GP care was relatively cost-effective (ICER = 3,800 per QALY gained) compared to manipulation plus GP care (ICER = 4,800 per QALY gained), or exercise plus GP care (ICER = 8,300 per QALY gained) from the UK healthcare sector's perspective (in 2000–2001 GBP) [40]. One study showed that receiving an operant conditioning programme with group discussion or a cognitive behavioural component and relaxation incurred lower direct and indirect costs compared to waiting list then receiving the operant conditioning programme, but did not report an incremental cost-effectiveness analysis [41].

Witt et al. found that adding acupuncture to physician care had a low ICER compared to physician care alone from the societal perspective (€ 10,526 per QALY gained in 2006 Euros, or GBP 7839.29 converted using purchasing power parities [www.oecd.org/dataoecd/61/54/18598754.pdf](http://www.oecd.org/dataoecd/61/54/18598754.pdf)) [45]. But this result is limited by methodological

**Table 3** The cost-effectiveness of interdisciplinary rehabilitation, exercise, spinal manipulation and cognitive-behavioural therapy (CBT) for sub-acute or chronic low back pain

Study	Comparative treatments	Details of economic evaluation	Results of economic evaluation
Critchley et al. [33]	Physiotherapy Spinal stabilization exercises Pain management programme using CBT	Type: CEA/CUA Perspective: healthcare sector Setting: United Kingdom, 2002–2005 Follow-up: 18 months	No raw data reported, but pain management programme associated with least costs and acceptability curve shows that it is likely to be most cost-effective
Hlobil et al. [26]	Advice Advice plus graded activity using CBT	Type: CBA Perspective: employer Setting: The Netherlands, 1999–2000 Follow-up: 1 year for costs, 3 years for other outcomes	Mean cost benefit = 999 (1999 Euro) favouring advice plus graded activity (95% CI –1,073 to 3,115)
Hollinghurst et al. [34]	GP care GP care plus exercise and behavioural counselling	Type: CEA/CUA Perspective: healthcare sector, patients, societal Setting: United Kingdom 2002–2004 Follow-up: 18 months	ICER for GP care plus exercise and behavioural counselling compared to GP care (in 2005 GBP per 1 unit of effect gained, from the healthcare sector's perspective only): Disability (RMDQ) = 61 Pain-free days = 9 QALY gained (EQ-5D) = 2,847
Johnson et al. [35]	GP care Exercise and education using CBT	Type: CEA/CUA Perspective: not stated Setting: United Kingdom 2002–2003 Follow-up: 15 months	ICER for exercise and education using CBT compared to GP care: 5,000 (2003–2004 GBP) per QALY gained (EQ-5D)
Kominski et al. [30]	GP care Chiropractic care (manipulation, instruction in back care and exercise)	Type: CMA Perspective: not stated Setting: United States 1995–1998 Follow-up: 18 months	Costs over 18 months in USD [price year not stated, mean (SD)]: GP care = 463 (1,225) Chiropractic care = 550 (834) GP care significantly cheaper
Lamb et al. [36]	Group cognitive behavioural intervention plus advice Advice	Type: CEA/CUA Perspective: healthcare sector Setting: United Kingdom, price year 2008 Follow-up: 1 year	ICER for Group cognitive behavioural intervention plus advice = 1,786 (2008 GBP) per QALY gained (EQ-5D)
Loisel et al. [25]	GP care Clinical rehabilitation (back pain specialist, back school ± multidisciplinary rehabilitation)	Type: CEA/CUA and CBA Perspective: insurance provider Setting: Canada 1991–1993 Follow-up: mean 6.4 years	ICER for treatments compared to GP care (in 1998 Canadian dollars per 1 day on full benefit): Clinical rehabilitation = –67.6 dominant
Niemisto et al. [23, 24]	Advice (advice, education and simple exercises) Advice plus manipulation and stabilizing exercises	Type: CEA/CUA Perspective: societal Setting: Finland, study initiated in 1999 Follow-up: 2 years	ICER for advice plus manipulation and stabilizing exercises compared to advice [in 2002 USD per 1 point gained, mean (95% CI)]: Pain (0–100) = 512 (77–949) Disability (Oswestry, 0–100) = –78 (–655 to 499)
Rivero-Arias et al. [39]	Outpatient rehabilitation Spinal surgery	Type: CEA/CUA Perspective: healthcare sector and patient Setting: United Kingdom, 1996–2002 Follow-up: 2 years	ICER for spinal surgery compared to outpatient rehabilitation [in 2002–2003 GBP]: 48,588 per QALY gained (95% CI –279,883 to 372,406)

**Table 3** continued

Study	Comparative treatments	Details of economic evaluation	Results of economic evaluation
Schweikert et al. [44]	Inpatient rehabilitation Inpatient rehabilitation plus CBT	Type: CEA/CUA Perspective: societal Setting: Germany, price year 2001 Follow-up: 6 months	ICER for inpatient rehabilitation plus CBT compared to inpatient rehabilitation –126,731 (2001 Euro) per QALY gained (EQ-5D, dominant)
Skouen et al. [28]	GP care Light interdisciplinary rehabilitation Extensive interdisciplinary rehabilitation	Type: CBA Perspective: societal Setting: Norway 1996–1997 Follow-up: 2 years after end of treatment	Cost benefit for treatments compared to GP care: Light interdisciplinary rehabilitation in male patients = 7,240,900 (1998 Norwegian kroner) for the male participants ( $n = 21$ ) over 24 months Extensive interdisciplinary rehabilitation —no data reported
Torstensen et al. [29]	Medical exercise therapy Physiotherapy Walking	Type: CBA Perspective: not reported Setting: Norway, 1993–1996 Follow-up: 15 months	Cost benefit compared to walking in Norwegian Kroner (price year not reported): Medical exercise therapy ( $n = 69$ ) = 906,732 less Physiotherapy ( $n = 67$ ) = 1,882,560 less
UK BEAM Trial Team [40]	GP care GP care plus exercise GP care plus manipulation GP care plus manipulation followed by exercise	Type: CEA/CUA Perspective: healthcare sector Setting: United Kingdom, 1999–2002 Follow-up: 1 year	ICER for treatments compared to GP care [in 2000–2001 GBP per QALY gained (EQ-5D)]: GP care plus exercise = 8,300 GP care plus manipulation = 4,800 GP care plus manipulation followed by exercise = 3,800
Van der Roer et al. [43]	Exercise and back school (using behavioural principles) Physiotherapy	Type: CEA/CUA Perspective: societal Setting: The Netherlands, price year 2004 Follow-up: 1 year	ICER for exercise and back school compared to physiotherapy (in 2004 Euro per unit of effect gained): Disability (RMDQ) = 16,349 Pain (numerical rating scale) = –175 (dominant) Perceived effects (Global perceived effects scale) = 1,720 QALY (EQ-5D) = 5,141
Whitehurst et al. [32]	Physiotherapy Pain management programme using CBT	Type: CEA/CUA Perspective: healthcare sector Setting: United Kingdom, price years 2001–2002 Follow-up: 1 year	ICER for physiotherapy compared to pain management (in 2001–2002 GBP per unit of effect gained): Disability (RMDQ) = 156 QALY (EQ-5D) = 2,362

CBA cost-benefit analysis, CEA cost-effectiveness analysis, CUA cost-utility analysis, GBP British pounds, GP care care provided by a general practitioner or a primary care physician, ICER incremental cost-effectiveness ratio, LBP low back pain, QALY quality-adjusted life-years, USD United States dollars

issues. For example, the costs collected (provided by health insurance funds) may be incomplete for the perspective adopted (societal), the methods of cost valuation were not reported, and data were collected immediately after the treatment period with no other follow-up. Ratcliffe et al. [37] showed that acupuncture had a low ICER compared to GP care from the healthcare sector perspective (4,241 in 2002 to 2003 GBP per QALY gained, 95%

CI = 191–28,026), and was dominant over GP care from the societal perspective.

Hollinghurst et al. [34] investigated the cost-effectiveness of massage over a 1-year period. Compared to GP care, massage incurred higher costs from the healthcare sector's perspective and was less effective (QALY gained = –34,473 in 2005 GBP). But adding exercise and behavioural counselling to massage improved the cost-effectiveness of



massage (ICER compared to GP care plus exercise and behavioural counselling = 5,304 in 2005 GBP). No studies investigated the cost-effectiveness of yoga or relaxation.

## Discussion

We found 26 economic evaluations conducted alongside randomised controlled trials that investigated the cost-effectiveness of guideline-endorsed treatments for non-specific LBP. There were inconsistent findings regarding the cost-effectiveness of advice, but studies generally showed that interdisciplinary rehabilitation, exercise, acupuncture, spinal manipulation and cognitive-behavioural therapy were relatively cost-effective for people with sub-acute or chronic LBP. Results from single studies suggested that massage alone was unlikely to be cost-effective, and that the cost-effectiveness of spinal manipulation for acute LBP was unclear. No studies investigated the cost-effectiveness of medication, yoga or relaxation as treatments for LBP.

The eight studies which investigated advice did not yield consistent or conclusive evidence about its relative cost-effectiveness. Interestingly, these studies also reported inconsistencies in the effectiveness of advice compared to other treatments. In contrast, the American clinical guideline made a strong recommendation for advice to stay active based on moderate-quality evidence [3]. Other guidelines also recommend advice to stay active [5]. One reason for the difference between our findings and guideline recommendations may be that in the guidelines, the recommendations were based on evidence from systematic reviews which compared advice to stay active with bed rest, which is considered potentially harmful for this population [47]. The studies included in this review compared advice to a variety of treatment alternatives, but not bed rest.

We did not pool the results in the studies that compared advice, and interdisciplinary rehabilitation, exercise, acupuncture, spinal manipulation and cognitive-behavioural therapy for sub-acute or chronic LBP, as may occur in a systematic review of treatment effectiveness. This is due to the heterogeneity in study treatments, as well as differences in economic perspectives and settings. The underlying assumption for pooling in a systematic review of treatment effectiveness is that results obtained in one country are generalisable to a similar population in a different setting or country. Whilst it seems reasonable to assume that individuals or groups are likely to react in the same way to a particular intervention, no matter where they live, comparing economic data across different settings or countries is not as straightforward due to differences in the structure and organization of healthcare systems. For example, in

some countries patients may have direct access to medical specialists or other healthcare providers while in other countries patients need a referral from a primary care physician. Access to some care providers may be limited in some countries where this care is not provided by a public healthcare system or is not reimbursed by an insurance scheme. Cost data may also be sensitive to the funding and reimbursement arrangements in a particular healthcare system. However, despite this complexity, there are emerging guidelines on the transferability of economic evaluations [48–50].

We used the NICE threshold to provide an indication of the cost-effectiveness of treatment, because the NICE threshold is commonly available. However, it should be noted that there is no consensus about the maximum costs per QALY gained that would be acceptable, and recent evidence indicates that the cost-effectiveness threshold may vary depending upon the severity and the prevalence of the disease. We used the treatments endorsed by the American College of Physicians and the American Pain Society as guideline-endorsed treatments, because at the time of study conception the American guideline was one of the most recent guidelines. A recent review shows that treatments endorsed by the American guideline are in line with other guidelines [5]. The only area of contention is in the use of spinal manipulation where, unlike the American guideline, some countries do not recommend spinal manipulation for LBP. Interestingly, our systematic review considers evidence purely from a cost-effectiveness perspective and shows some evidence of cost-effectiveness when using spinal manipulation in sub-acute to chronic pain.

There were some methodological issues which limit the interpretation of our findings. These include the incomplete identification and measurement of costs, which reduces the rigour of the results. Three studies had follow-up periods that are likely to be too short to fully appreciate the economic consequences for the chronic population under investigation [44–46]. Based on recent large cohort studies on the prognosis of acute [51] and chronic [52] LBP, we recommend a follow-up period of at least 3 months for acute LBP and at least 12 months for chronic LBP. In addition, to help readers assess the extent to which the results of studies are applicable to different healthcare systems, we recommend that economic evaluations report unit costs as well as reporting a breakdown of costs and resource utilization. Eleven of the 26 included studies provided a table of unit costs [21, 22, 33, 34, 37–40, 42, 43, 46, 53].

Considering the evidence regarding both relative effectiveness and cost-effectiveness when making treatment recommendations means that the endorsed treatments are both beneficial to patients and efficient in terms of healthcare resources. The small number or lack of economic evaluations for some guideline-endorsed treatments means well-

conducted economic evaluations are required to strengthen the evidence-base of treatments for LBP. However, evidence to date indicates that guideline-endorsed treatments such as interdisciplinary rehabilitation, exercise, acupuncture, spinal manipulation and cognitive-behavioural therapy for sub-acute or chronic LBP are cost-effective. Although advice to stay active is endorsed in the guideline, and evidence regarding its cost-effectiveness compared to other interventions is inconsistent. In addition, there is little or no high-level evidence about other guideline-endorsed treatments: medication, spinal manipulation for acute LBP, and massage, yoga or relaxation for chronic LBP.

**Acknowledgments** CL and CM are funded by the National Health and Medical Research Council, Australia. LM is funded by Fundação de Amparo à Pesquisa do Estado de Minas Gerais (FAPEMIG), Brazil.

**Open Access** This article is distributed under the terms of the Creative Commons Attribution Noncommercial License which permits any noncommercial use, distribution, and reproduction in any medium, provided the original author(s) and source are credited.

## Appendix: Search strategy for Embase (via OvidSP)

Part A: Generic search for randomized controlled trials and controlled clinical trials

---

1 Clinical Article/  
 2 exp Clinical Study/  
 3 Clinical Trial/  
 4 Controlled Study/  
 5 Randomized Controlled Trial/  
 6 Major Clinical Study/  
 7 Double Blind Procedure/  
 8 Multicenter Study/  
 9 Single Blind Procedure/  
 10 Phase 3 Clinical Trial/  
 11 Phase 4 Clinical Trial/  
 12 crossover procedure/  
 13 placebo/  
 14 or/1-13  
 15 allocat\$.mp.  
 16 assign\$.mp.  
 17 blind\$.mp.  
 18 (clinic\$ adj25 (study or trial)).mp.  
 19 compar\$.mp.  
 20 control\$.mp.  
 21 cross?over.mp.  
 22 factorial\$.mp.

---

## Appendix continued

---

23 follow?up.mp.  
 24 placebo\$.mp.  
 25 prospectiv\$.mp.  
 26 random\$.mp.  
 27 ((singl\$ or doubl\$ or trebl\$ or tripl\$) adj25 (blind\$ or mask\$)).mp.  
 28 trial.mp.  
 29 (versus or vs).mp.  
 30 or/15-29  
 31 14 and 30  
 32 human/  
 33 Nonhuman/  
 34 exp ANIMAL/  
 35 Animal Experiment/  
 36 33 or 34 or 35  
 37 32 not 36  
 38 31 not 36  
 39 37 and 38  
 40 38 or 39

---

Part B: Specific search for low back problems

---

41 dorsalgia.mp.  
 42 back pain.mp.  
 43 exp LOW BACK PAIN/  
 44 exp BACKACHE/  
 45 (lumbar adj pain).mp.  
 46 lumbago.mp.  
 47 or/41-46

---

Part C: Specific search for economic evaluation

---

48 health-economics/  
 49 exp economic-evaluation/  
 50 exp health-care-cost/  
 51 exp pharmacoeconomics/  
 52 OR\48-51  
 53 (econom\$ or cost or costs or costly or costing or price or prices or pricing or pharmacoeconomic\$.ti,ab  
 54 (expenditure\$ not energy).ti,ab  
 55 (value adj2 money).ti,ab  
 56 budget\$.ti,ab  
 57 OR\53-56  
 58 52 or 57  
 59 (metabolic adj cost).ti,ab  
 60 ((energy or oxygen) adj cost).ti,ab

---

## Appendix continued

61 ((energy or oxygen) near expenditure).ti,ab  
 62 OR\59-61  
 63 58 not 62

## Part D: combine

64 40 AND 47 AND 63

Included studies	Related publications used
<ul style="list-style-type: none"> <li>• Critchley DJ, Ratcliffe J, Noonan S, Jones RH, Hurley MV (2007) Effectiveness and cost-effectiveness of three types of physiotherapy used to reduce chronic low back pain disability: a pragmatic randomized trial with economic evaluation. <i>Spine</i> 32(14):1474–1481</li> <li>• Goossens ME, Rutten-Van Molken MP, Kole-Snijders AM, Vlaeyen JW, Van Breukelen G, Leidl R (1998) Health economic assessment of behavioural rehabilitation in chronic low back pain: a randomised clinical trial. <i>Health Econ</i> 7(1):39–51</li> <li>• Herman PM, Szczurko O, Cooley K, Mills EJ (2008) Cost-effectiveness of naturopathic care for chronic low back pain. <i>Altern Ther Health Med</i> 14(2):32–39</li> <li>• Hlobil H, Uegaki K, Staal JB, de Bruyne MC, Smid T, van Mechelen W (2007) Substantial sick-leave costs savings due to a graded activity intervention for workers with non-specific sub-acute low back pain. <i>Eur Spine J</i> 16(7):919–924</li> <li>• Hollinghurst S, Sharp D, Ballard K, Barnett J, Beattie A, Evans M, Lewith G, Middleton K, Oxford F, Webley F, Little P (2008) Randomised controlled trial of alexander technique lessons, exercise, and massage (ateam) for chronic and recurrent back pain: economic evaluation. <i>BMJ</i> 337:a2656</li> </ul>	<p>Nil</p> <p>Nil</p> <ul style="list-style-type: none"> <li>• Szczurko O, Cooley K, Busse JW, Seely D, Bernhardt B, Guyatt GH, et al (2007) Naturopathic care for chronic low back pain: a randomized trial. <i>PLoS One</i> 2:e919</li> <li>• Staal JB, Hlobil H, Twisk JW, Smid T, Köke AJ, van Mechelen W (2004) Graded activity for low back pain in occupational health care: a randomized, controlled trial. <i>Ann Intern Med</i> 140:77–84</li> <li>• Little P, Lewith G, Webley F, Evans M, Beattie A, Middleton K, et al (2008) Randomised controlled trial of Alexander technique lessons, exercise, and massage (ATEAM) for chronic and recurrent back pain. <i>BMJ</i> 337:a884</li> </ul>

## Appendix continued

Included studies	Related publications used
<ul style="list-style-type: none"> <li>• Johnson RE, Jones GT, Wiles NJ, Chaddock C, Potter RG, Roberts C, Symmons DPM, Watson PJ, Torgerson DJ, Macfarlane GJ (2007) Active exercise, education, and cognitive behavioral therapy for persistent disabling low back pain: a randomized controlled trial. <i>Spine</i> 32(15):1578–1585</li> <li>• Karjalainen K, Malmivaara A, Mutanen P, Roine R, Hurri H, Pohjolainen T (2004) Mini-intervention for subacute low back pain: two-year follow-up and modifiers of effectiveness. <i>Spine</i> 29(10):1069–1076</li> <li>• Karjalainen K, Malmivaara A, Pohjolainen T, Hurri H, Mutanen P, Rissanen P, Pahkajarvi H, Levon H, Karpoff H, Roine R (2003) Mini-intervention for subacute low back pain: a randomized controlled trial. <i>Spine</i> 28(6):533–540</li> <li>• Kominski GF, Heslin KC, Morgenstern H, Hurwitz EL, Harber PI (2005) Economic evaluation of four treatments for low-back pain: results from a randomized controlled trial. <i>Med Care</i> 43(5):428–435</li> <li>• Lamb SE, Hansen Z, Lall R, Castelnovo E, Withers EJ, Nichols V, Potter R, Underwood MR (2010) Group cognitive behavioural treatment for low-back pain in primary care: a randomised controlled trial and cost-effectiveness analysis. <i>Lancet</i> 375(9718):916–923</li> <li>• Loisel P, Lemaire J, Poitras S, Durand MJ, Champagne F, Stock S, Diallo B, Tremblay C (2002) Cost-benefit and cost-effectiveness analysis of a disability prevention model for back pain management: a six year follow up study. <i>Occup Environ Med</i> 59(12):807–815</li> </ul>	<p>Nil</p> <p>Nil</p> <ul style="list-style-type: none"> <li>• Hurwitz EL, Morgenstern H, Harber P, Kominski GF, Belin TR, Yu F, et al (2002) A randomized trial of medical care with and without physical therapy and chiropractic care with and without physical modalities for patients with low back pain: 6-month follow-up outcomes from the UCLA low back pain study. <i>Spine</i> 27:2193–2204</li> </ul> <p>Nil</p> <ul style="list-style-type: none"> <li>• Loisel P, Abenham L, Durand P, Esdaile JM, Suissa S, Gosselin L, et al (1997) A population-based, randomized clinical trial on back pain management. <i>Spine</i> 22:2911–2918</li> </ul>

## Appendix continued

Included studies	Related publications used
<ul style="list-style-type: none"> <li>• Molde Hagen E, Grasdal A, Eriksen HR (2003) Does early intervention with a light mobilization program reduce long-term sick leave for low back pain: a 3-year follow-up study. <i>Spine</i> 28(20):2309–2315</li> <li>• Niemisto L, Lahtinen-Suopanki T, Rissanen P, Lindgren K-A, Sarna S, Hurri H (2003) A randomized trial of combined manipulation, stabilizing exercises, and physician consultation compared to physician consultation alone for chronic low back pain. <i>Spine</i> 28(19):2185–2191</li> <li>• Niemisto L, Rissanen P, Sarna S, Lahtinen-Suopanki T, Lindgren K-A, Hurri H (2005) Cost-effectiveness of combined manipulation, stabilizing exercises, and physician consultation compared to physician consultation alone for chronic low back pain: a prospective randomized trial with 2-year follow-up. <i>Spine</i> 30(10):1109–1115</li> <li>• Ratcliffe J, Thomas KJ, MacPherson H, Brazier J (2006) A randomised controlled trial of acupuncture care for persistent low back pain: cost effectiveness analysis. <i>BMJ</i> 333(7569):626</li> <li>• Rivero-Arias O, Gray A, Frost H, Lamb SE, Stewart-Brown S (2006) Cost-utility analysis of physiotherapy treatment compared with physiotherapy advice in low back pain. <i>Spine</i> 31(12):1381–1387</li> <li>• Rivero-Arias O, Campbell H, Gray A, Fairbank J, Frost H, Wilson-MacDonald J (2005) Surgical stabilisation of the spine compared with a programme of intensive rehabilitation for the management of patients with chronic low back pain: cost utility analysis based on a randomised controlled trial. <i>BMJ</i> 330(7502):1239</li> </ul>	<ul style="list-style-type: none"> <li>Nil</li> <li>Nil</li> <li>• Thomas KJ, MacPherson H, Ratcliffe J, Thorpe L, Brazier J, Campbell M, et al (2005) Longer term clinical and economic benefits of offering acupuncture care to patients with chronic low back pain. <i>Health Technol Assess</i> 9:iii–iv, ix–x, 1–109</li> <li>• Frost H, Lamb SE, Doll HA, Carver PT, Stewart-Brown S (2004) Randomised controlled trial of physiotherapy compared with advice for low back pain. <i>BMJ</i> 329:708</li> <li>• Fairbank J, Frost H, Wilson-MacDonald J, Yu LM, Barker K, Collins R, et al (2005) Randomised controlled trial to compare surgical stabilisation of the lumbar spine with an intensive rehabilitation programme for patients with chronic low back pain: the MRC spine stabilisation trial. <i>BMJ</i> 330:1233</li> </ul>

## Appendix continued

Included studies	Related publications used
<ul style="list-style-type: none"> <li>• Schweikert B, Jacobi E, Seitz R, Cziske R, Ehlert A, Knab J, Leidl R (2006) Effectiveness and cost-effectiveness of adding a cognitive behavioral treatment to the rehabilitation of chronic low back pain. <i>J Rheumatol</i> 33(12):2519–2526</li> <li>• Skouen JS, Grasdal AL, Haldorsen EMH, Ursin H (2002) Relative cost-effectiveness of extensive and light multidisciplinary treatment programs versus treatment as usual for patients with chronic low back pain on long-term sick leave: randomized controlled study. <i>Spine</i> 27(9):901–909</li> <li>• Smeets RJ, Severens JL, Beelen S, Vlaeyen JW, Knottnerus J (2009) More is not always better: cost-effectiveness analysis of combined, single behavioral and single physical rehabilitation programs for chronic low back pain. <i>Eur J Pain</i> 13(1):71–81</li> <li>• Strong LL, Von Korff M, Saunders K, Moore JE (2006) Cost-effectiveness of two self-care interventions to reduce disability associated with back pain. <i>Spine</i> 31(15):1639–1645</li> </ul>	<ul style="list-style-type: none"> <li>• Seferlis T, Németh G, Carlsson AM, Gillström P (1998) Conservative treatment in patients sick-listed for acute low-back pain: a prospective randomised study with 12 months' follow-up. <i>Eur Spine J</i> 7:461–470</li> <li>• Haldorsen EM, Grasdal AL, Skouen JS, Risa AE, Kronholm K, Ursin H (2002) Is there a right treatment for a particular patient group? Comparison of ordinary treatment, light multidisciplinary treatment, and extensive multidisciplinary treatment for long-term sick-listed employees with musculoskeletal pain. <i>Pain</i> 95:49–63</li> <li>• Moore JE, Von Korff M, Cherkin D, Saunders K, Lorig K. A randomized trial of a cognitive-behavioral program for enhancing back pain self care in a primary care setting. <i>Pain</i>. 2000;88:145–153</li> <li>• Von Korff M, Moore JE, Lorig K, Cherkin DC, Saunders K, González VM, et al (1998) A randomized trial of a lay person-led self-management group intervention for back pain patients in primary care. <i>Spine</i> 23:2608–2615</li> </ul>

## Appendix continued

Included studies	Related publications used
<ul style="list-style-type: none"> <li>• Torstensen TA, Ljunggren AE, Meen HD, Odland E, Mowinckel P, Geijerstam S (1998) Efficiency and costs of medical exercise therapy, conventional physiotherapy, and self-exercise in patients with chronic low back pain. A pragmatic, randomized, single-blinded, controlled trial with 1-year follow-up. <i>Spine</i> 23(23):2616–2624</li> <li>• UK BEAM Trial (2004) United kingdom back pain exercise and manipulation (UK BEAM) randomised trial: cost effectiveness of physical treatments for back pain in primary care. <i>BMJ</i> 329(7479):1381–1385</li> <li>• van der Roer N, van Tulder M, van Mechelen W, de Vet H (2008) Economic evaluation of an intensive group training protocol compared with usual care physiotherapy in patients with chronic low back pain. <i>Spine</i> 33(4):445–451</li> <li>• Whitehurst DGT, Lewis M, Yao GL, Bryan S, Raftery JP, Mullis R, Hay EM (2007) A brief pain management program compared with physical therapy for low back pain: results from an economic analysis alongside a randomized clinical trial. <i>Arthritis Rheum</i> 57(3):466–473</li> <li>• Witt CM, Jena S, Selim D, Brinkhaus B, Reinhold T, Wruck K, Liecker B, Linde K, Wegscheider K, Willich SN (2006) Pragmatic randomized trial evaluating the clinical and economic effectiveness of acupuncture for chronic low back pain. <i>Am J Epidemiol</i> 164(5):487–496</li> </ul>	<ul style="list-style-type: none"> <li>• Brealey S, Burton K, Coulton S, Farrin A, Garratt A, Harvey E, et al (2003) UK Back pain Exercise And Manipulation (UK BEAM) trial - national randomised trial of physical treatments for back pain in primary care: objectives, design and interventions [ISRCTN32683578]. <i>BMC Health Serv Res</i> 3:16</li> <li>• UK BEAM Trial Team (2004) United Kingdom back pain exercise and manipulation (UK BEAM) randomised trial: effectiveness of physical treatments for back pain in primary care. <i>BMJ</i> 329:1377</li> <li>• van der Roer N, van Tulder M, Barendse J, Knol D, van Mechelen W, de Vet H (2008) Intensive group training protocol versus guideline physiotherapy for patients with chronic low back pain: a randomised controlled trial. <i>Eur Spine J</i> 17:1193–1200</li> <li>• Hay EM, Mullis R, Lewis M, Vohora K, Main CJ, Watson P, et al (2005) Comparison of physical treatments versus a brief pain-management programme for back pain in primary care: a randomised clinical trial in physiotherapy practice. <i>Lancet</i> 365:2024–2030</li> </ul>

## References

- Hestbaek L, Leboeuf-Yde C, Manniche C (2003) Low back pain: what is the long-term course? A review of studies of general patient populations. *Eur Spine J* 12:149–165
- Koes BW, van Tulder MW, Thomas S (2006) Diagnosis and treatment of low back pain. *BMJ* 332(7555):1430–1434
- Chou R, Qaseem A, Snow V, Casey D, Cross JT Jr, Shekelle P, Owens DK, Clinical Efficacy Assessment Subcommittee of the American College of Physicians; American College of Physicians; American Pain Society Low Back Pain Guidelines Panel (2007) Diagnosis and treatment of low back pain: a joint clinical practice guideline from the American College of Physicians and the American Pain Society. *Ann Intern Med* 147(7):478–491
- Henschke N, Maher CG, Refshauge KM, Herbert RD, Cumming RG, Bleasel J, York J, Das A, McAuley JH (2009) Prevalence of and screening for serious spinal pathology in patients presenting to primary care with acute low back pain. *Arthritis Rheum* 60(10):3072–3080
- Koes B, van Tulder M, Lin C, Macedo L, McAuley JH, Maher C (Accepted 16 June 2010) An updated overview of clinical guidelines for the management of nonspecific low back pain in primary care. *Eur Spine J* 19(12):2075–2094
- The cochrane library, issue 3 2009. <http://www3.interscience.wiley.com/cgi-bin/mrwhome/106568753/HOME?CRETRY=1&SRETRY=0>. Accessed 22 September 2009
- Savigny P, Kuntze S, Watson P, Underwood M, Ritchie G, Cotterell M, Hill D, Browne N, Buchanan E, Coffey P, Dixon P, Drummond C, Flanagan M, Greenough C, Griffiths M, Halliday-Bell J, Hettinga D, Vogel S, Walsh D (2009) Low back pain: early management of persistent non-specific low back pain. National Collaborating Centre for Primary Care and Royal College of General Practitioners, London
- van der Roer N, Goossens ME, Evers SM, van Tulder MW (2005) What is the most cost-effective treatment for patients with low back pain? A systematic review. *Best Pract Res Clin Rheumatol* 19(4):671–684
- Dagenais S, Roffey DM, Wai EK, Haldeman S, Caro J (2009) Can cost utility evaluations inform decision making about interventions for low back pain? *Spine J* 9(11):944–957
- Dagenais S, Caro J, Haldeman S (2008) A systematic review of low back pain cost of illness studies in the United States and internationally. *Spine J* 8(1):8–20
- Martin BI, Deyo RA, Mirza SK, Turner JA, Comstock BA, Hollingworth W, Sullivan SD (2008) Expenditures and health status among adults with back and neck problems. *JAMA* 299(6):656–664
- Drummond MF, Sculpher MJ, Torrance GW, O'Brien BJ, Stoddart GL (2005) *Methods for the economic evaluation of health care programmes*, 3rd edn. Oxford University Press, Oxford
- Furlan AD, Pennick V, Bombardier C, van Tulder M, Editorial Board Cochrane Back Review Group (2009) 2009 updated method guidelines for systematic reviews in the cochrane back review group. *Spine* 34(18):1929–1941
- van Tulder M, Furlan A, Bombardier C, Bouter L, Editorial Board of the Cochrane Collaboration Back Review Group (2003) Updated method guidelines for systematic reviews in the cochrane collaboration back review group. *Spine* 28(12):1290–1299
- Evers S, Goossens M, de Vet H, van Tulder M, Ament A (2005) Criteria list for assessment of methodological quality of economic evaluations: Consensus on health economic criteria. *Int J Technol Assess Health Care* 21(2):240–245

16. van Tulder M, Suttorp M, Morton S, Bouter L, Shekelle P (2009) Empirical evidence of an association between internal validity and effect size in randomized controlled trials of low-back pain. *Spine* 34(16):1685–1692
17. Appleby J, Devlin N, Parkin D (2007) Nice's cost effectiveness threshold. *BMJ* 335(7616):358–359
18. Moore JE, Von Korff M, Cherkin D, Saunders K, Lorig K (2000) A randomized trial of a cognitive-behavioral program for enhancing back pain self care in a primary care setting. *Pain* 88(2):145–153
19. Von Korff M, Moore JE, Lorig K, Cherkin DC, Saunders K, González VM, Laurent D, Rutter C, Comite F (1998) A randomized trial of a lay person-led self-management group intervention for back pain patients in primary care. *Spine* 23(23):2608–2615
20. Strong LL, Von Korff M, Saunders K, Moore JE (2006) Cost-effectiveness of two self-care interventions to reduce disability associated with back pain. *Spine* 31(15):1639–1645
21. Karjalainen K, Malmivaara A, Mutanen P, Roine R, Hurri H, Pohjolainen T (2004) Mini-intervention for subacute low back pain: two-year follow-up and modifiers of effectiveness. *Spine* 29(10):1069–1076
22. Karjalainen K, Malmivaara A, Pohjolainen T, Hurri H, Mutanen P, Rissanen P, Pahkajarvi H, Levon H, Karpoff H, Roine R (2003) Mini-intervention for subacute low back pain: a randomized controlled trial. *Spine* 28(6):533–540
23. Niemisto L, Lahtinen-Suopanki T, Rissanen P, Lindgren K-A, Sarna S, Hurri H (2003) A randomized trial of combined manipulation, stabilizing exercises, and physician consultation compared to physician consultation alone for chronic low back pain. *Spine* 28(19):2185–2191
24. Niemisto L, Rissanen P, Sarna S, Lahtinen-Suopanki T, Lindgren K-A, Hurri H (2005) Cost-effectiveness of combined manipulation, stabilizing exercises, and physician consultation compared to physician consultation alone for chronic low back pain: a prospective randomized trial with 2-year follow-up. *Spine* 30(10):1109–1115
25. Loisel P, Lemaire J, Poitras S, Durand MJ, Champagne F, Stock S, Diallo B, Tremblay C (2002) Cost-benefit and cost-effectiveness analysis of a disability prevention model for back pain management: a six year follow up study. *Occup Environ Med* 59(12):807–815
26. Hlobil H, Uegaki K, Staal JB, de Bruyne MC, Smid T, van Mechelen W (2007) Substantial sick-leave costs savings due to a graded activity intervention for workers with non-specific subacute low back pain. *Eur Spine J* 16(7):919–924
27. Molde Hagen E, Grasdahl A, Eriksen HR (2003) Does early intervention with a light mobilization program reduce long-term sick leave for low back pain: a 3-year follow-up study. *Spine* 28(20):2309–2315
28. Skouen JS, Grasdahl AL, Haldorsen EMH, Ursin H (2002) Relative cost-effectiveness of extensive and light multidisciplinary treatment programs versus treatment as usual for patients with chronic low back pain on long-term sick leave: randomized controlled study. *Spine* 27(9):901–909
29. Torstensen TA, Ljunggren AE, Meen HD, Odland E, Mowinckel P, Geijerstam S (1998) Efficiency and costs of medical exercise therapy, conventional physiotherapy, and self-exercise in patients with chronic low back pain. A pragmatic, randomized, single-blinded, controlled trial with 1-year follow-up. *Spine* 23(23):2616–2624
30. Kominski GF, Heslin KC, Morgenstern H, Hurwitz EL, Harber PI (2005) Economic evaluation of four treatments for low-back pain: results from a randomized controlled trial. *Med Care* 43(5):428–435
31. Seferlis T, Lindholm L, Nemeth G (2000) Cost-minimisation analysis of three conservative treatment programmes in 180 patients sick-listed for acute low-back pain. *Scand J Prim Health Care* 18(1):53–57
32. Whitehurst DGT, Lewis M, Yao GL, Bryan S, Raftery JP, Mullis R, Hay EM (2007) A brief pain management program compared with physical therapy for low back pain: results from an economic analysis alongside a randomized clinical trial. *Arthritis Rheum* 57(3):466–473
33. Critchley DJ, Ratcliffe J, Noonan S, Jones RH, Hurley MV (2007) Effectiveness and cost-effectiveness of three types of physiotherapy used to reduce chronic low back pain disability: a pragmatic randomized trial with economic evaluation. *Spine* 32(14):1474–1481
34. Hollinghurst S, Sharp D, Ballard K, Barnett J, Beattie A, Evans M, Lewith G, Middleton K, Oxford F, Webley F, Little P (2008) Randomised controlled trial of alexander technique lessons, exercise, and massage (ateam) for chronic and recurrent back pain: economic evaluation. *BMJ* 337:a2656
35. Johnson RE, Jones GT, Wiles NJ, Chaddock C, Potter RG, Roberts C, Symmons DPM, Watson PJ, Torgerson DJ, Macfarlane GJ (2007) Active exercise, education, and cognitive behavioral therapy for persistent disabling low back pain: a randomized controlled trial. *Spine* 32(15):1578–1585
36. Lamb SE, Hansen Z, Lall R, Castelnuovo E, Withers EJ, Nichols V, Potter R, Underwood MR (2010) Group cognitive behavioural treatment for low-back pain in primary care: a randomised controlled trial and cost-effectiveness analysis. *Lancet* 375(9718):916–923
37. Ratcliffe J, Thomas KJ, MacPherson H, Brazier J (2006) A randomised controlled trial of acupuncture care for persistent low back pain: cost effectiveness analysis. *BMJ* 333(7569):626
38. Rivero-Arias O, Gray A, Frost H, Lamb SE, Stewart-Brown S (2006) Cost-utility analysis of physiotherapy treatment compared with physiotherapy advice in low back pain. *Spine* 31(12):1381–1387
39. Rivero-Arias O, Campbell H, Gray A, Fairbank J, Frost H, Wilson-MacDonald J (2005) Surgical stabilisation of the spine compared with a programme of intensive rehabilitation for the management of patients with chronic low back pain: cost utility analysis based on a randomised controlled trial. *BMJ* 330(7502):1239
40. UK BEAM Trial (2004) United kingdom back pain exercise and manipulation (UK BEAM) randomised trial: cost effectiveness of physical treatments for back pain in primary care. *BMJ* 329(7479):1381–1385
41. Goossens ME, Rutten-Van Molken MP, Kole-Snijders AM, Vlaeyen JW, Van Breukelen G, Leidl R (1998) Health economic assessment of behavioural rehabilitation in chronic low back pain: a randomised clinical trial. *Health Econ* 7(1):39–51
42. Smeets RJ, Severens JL, Beelen S, Vlaeyen JW, Knottnerus J (2009) More is not always better: cost-effectiveness analysis of combined, single behavioral and single physical rehabilitation programs for chronic low back pain. *Eur J Pain* 13(1):71–81
43. van der Roer N, van Tulder M, van Mechelen W, de Vet H (2008) Economic evaluation of an intensive group training protocol compared with usual care physiotherapy in patients with chronic low back pain. *Spine* 33(4):445–451
44. Schweikert B, Jacobi E, Seitz R, Czisze R, Ehlert A, Knab J, Leidl R (2006) Effectiveness and cost-effectiveness of adding a cognitive behavioral treatment to the rehabilitation of chronic low back pain. *J Rheumatol* 33(12):2519–2526
45. Witt CM, Jena S, Selim D, Brinkhaus B, Reinhold T, Wruck K, Liecker B, Linde K, Wegscheider K, Willich SN (2006) Pragmatic randomized trial evaluating the clinical and economic

- effectiveness of acupuncture for chronic low back pain. *Am J Epidemiol* 164(5):487–496
46. Herman PM, Szczurko O, Cooley K, Mills EJ (2008) Cost-effectiveness of naturopathic care for chronic low back pain. *Altern Ther Health Med* 14(2):32–39
  47. Hilde G, Hagen KB, Jamtvedt G, Winnem M (2002) Advice to stay active as a single treatment for low back pain and sciatica. *Cochrane Database Syst Rev* (2):CD003632
  48. Boulenger S, Nixon J, Drummond M, Ulmann P, Rice S, de Pouvourville G (2005) Can economic evaluations be made more transferable? *Eur J Health Econ* 6(4):334–346
  49. Edejer TT (2006) Improving the use of research evidence in guideline development: 11. Incorporating considerations of cost-effectiveness, affordability and resource implications. *Health Res Policy Syst* 4:23
  50. Goeree R, Burke N, O'Reilly D, Manca A, Blackhouse G, Tarride JE (2007) Transferability of economic evaluations: approaches and factors to consider when using results from one geographic area for another. *Curr Med Res Opin* 23(4):671–682
  51. Henschke N, Maher CG, Refshauge KM, Herbert RD, Cumming RG, Bleasel J, York J, Das A, McAuley JH (2008) Prognosis in patients with recent onset low back pain in Australian primary care: inception cohort study. *BMJ* 337:a171
  52. Costa LdC, Maher CG, McAuley JH, Hancock MJ, Herbert RD, Refshauge KM, Henschke N (2009) Prognosis for patients with chronic low back pain: inception cohort study. *BMJ* 339:b3829
  53. Jellema P, van der Roer N, van der Windt DAWM, van Tulder MW, van der Horst HE, Stalman WAB, Bouter LM (2007) Low back pain in general practice: cost-effectiveness of a minimal psychosocial intervention versus usual care. *Eur Spine J* 16(11):1812–1821