

# Financing Water, Sanitation & Hygiene in the Pacific

Session RP11

UNICEF Pacific & UTS Institute for Sustainable Futures

**Disclaimer:** this presentation contains information that is limited for the purpose of discussion within the Tenth World Water Forum (WWF) 2024; if you are not the intended recipient of the information, you are hereby notified that you should not review, use, disclose, distribute, copy or forward this information.

**Avertissement:** cette présentation contient des informations limitées aux fins de discussion au sein du Dixième Forum mondial de l'eau (WWF) 2024; si vous n'êtes pas le destinataire prévu de ces informations, vous êtes informé par la présente que vous ne devez pas examiner, utiliser, divulguer, distribuer, copier ou transmettre ces informations.

# PRESENTATION BRIEF

- Session number: RP11
- Name of presenter: Tim Foster
- Institution: UNICEF Pacific & UTS Institute for Sustainable Futures
- Key phrases:
  - Pacific
  - Financing
  - Water
  - Sanitation

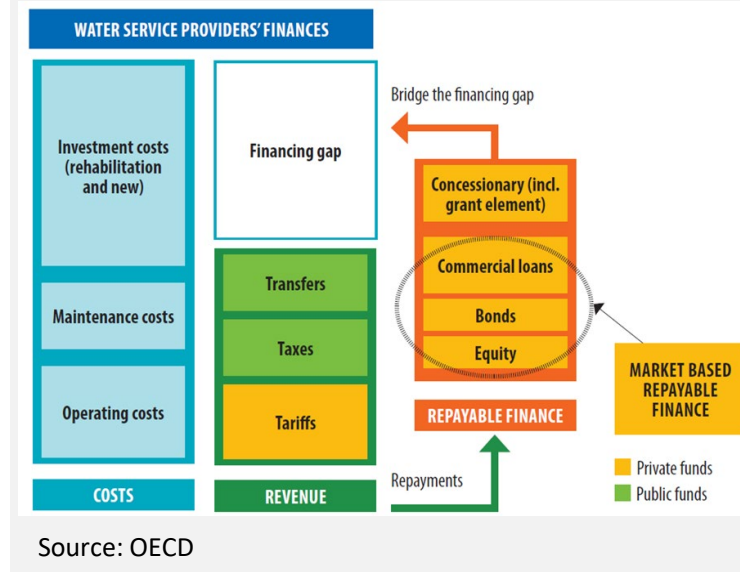


# Assessment of WASH Financing conducted for 14 Pacific Island Countries

## 14 Countries in the Pacific



## The '3T's framework



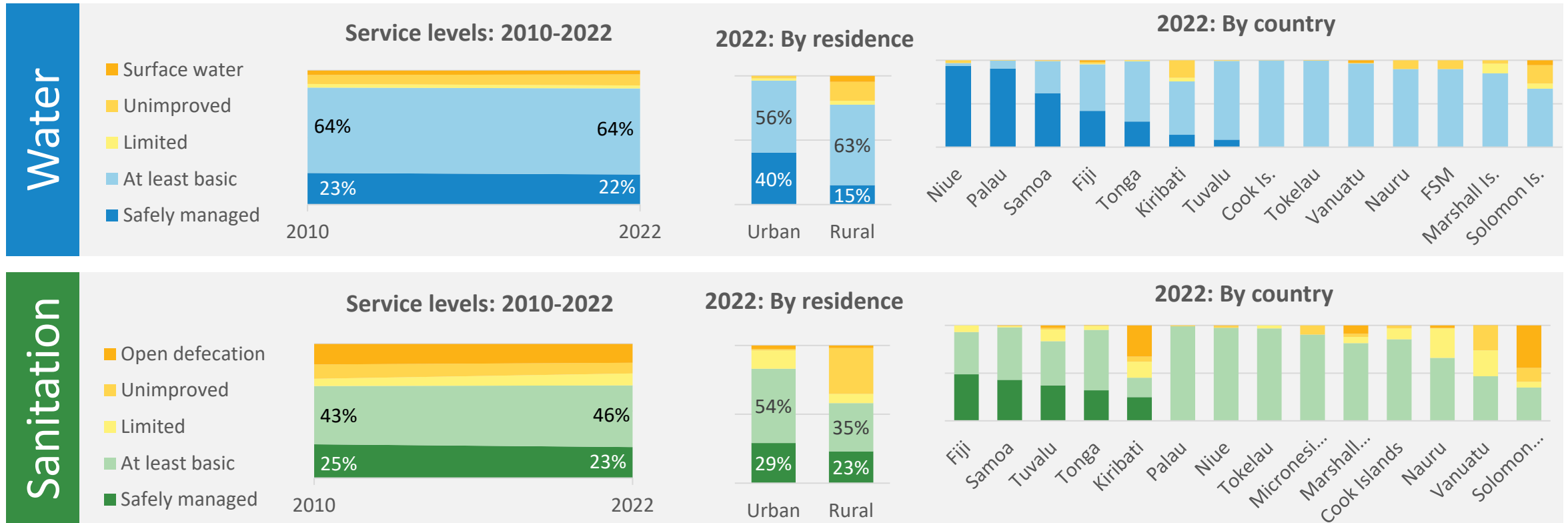
## Range of data sources

Transfers	Donor Funding	OECD Creditor Reporting System
		GLAAS 2018
Taxes	Government Expenditure	Budget estimates
		GLAAS 2018
		IMF COFOG
Tariffs	Household Expenditure	Household Income & Expenditure surveys (HIES)
		GLAAS 2018
		IBNET and/or Utility Reports



The assessment focuses on the 14 Pacific Island Countries and Territories where the UNICEF Pacific Region Office carries out programming: Cook Islands, Fiji, Kiribati, Marshall Islands, Federated States of Micronesia, Nauru, Niue, Palau, Samoa, Solomon Islands, Tokelau, Tonga, Tuvalu, Vanuatu.

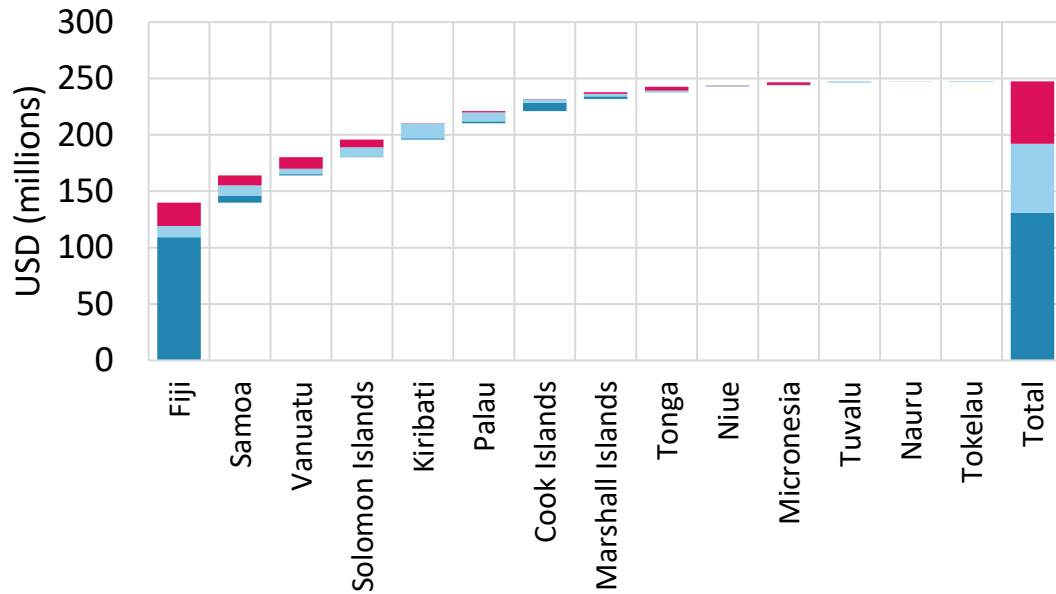
# Each year, >20,000 people gain access to basic water and sanitation, but region is off track to achieve SDG6 by 2030



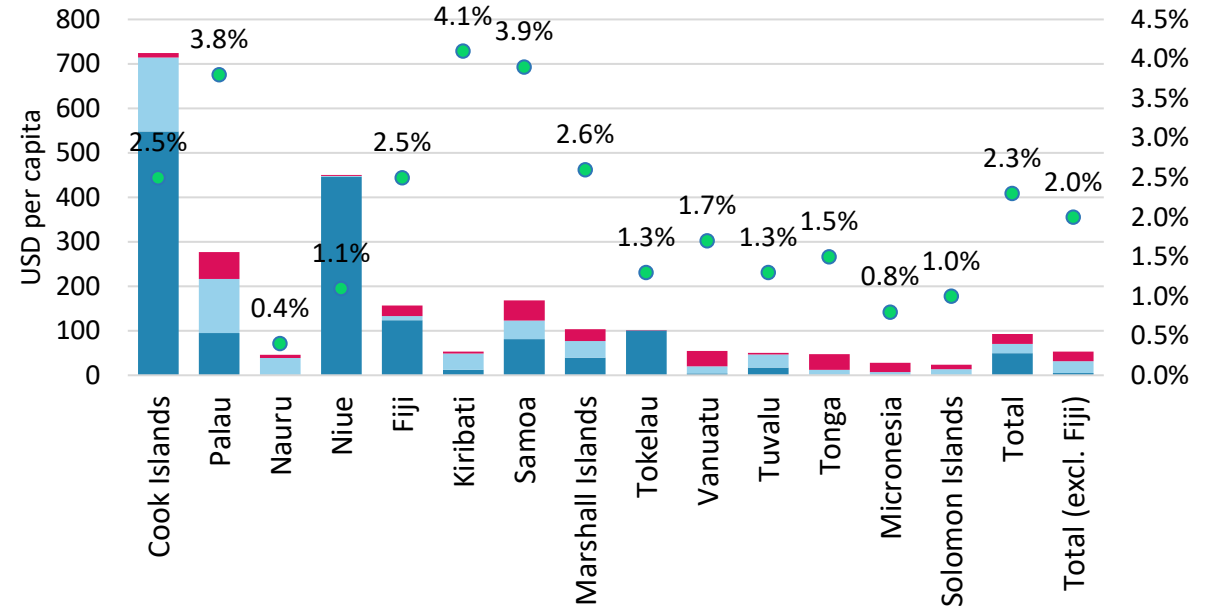
Data source: WHO/UNICEF Joint Monitoring Programme

# ~US\$ 250m spent on WASH annually (~\$100 per capita, or 2.3% of GDP) but major disparities across countries

Annual funding for Water & Sanitation: 2016-2020



Annual funding for Water & Sanitation per capita: 2016-2020



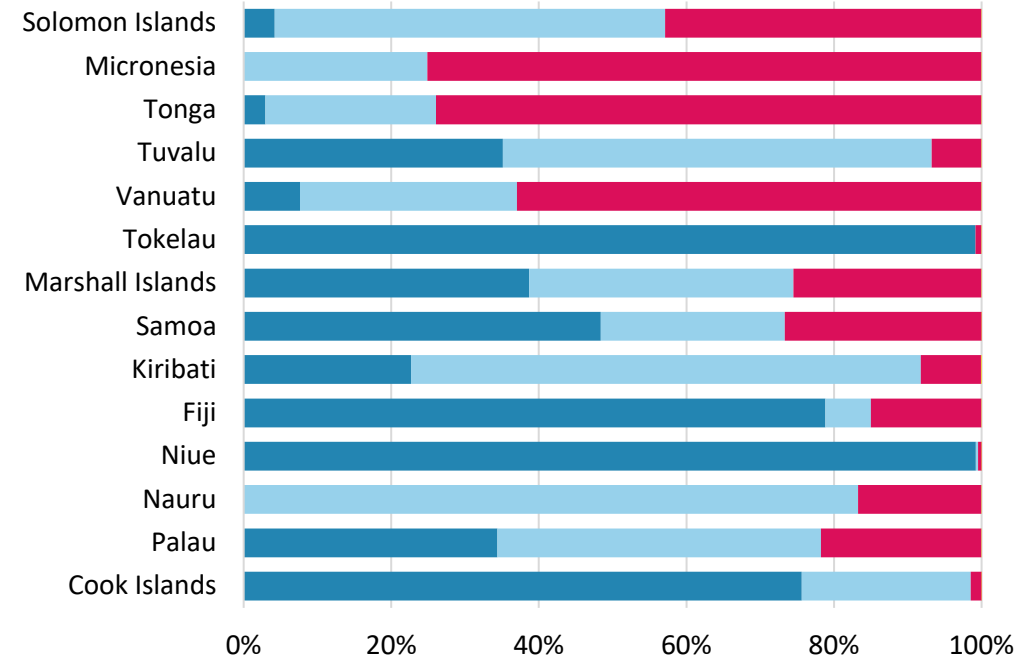
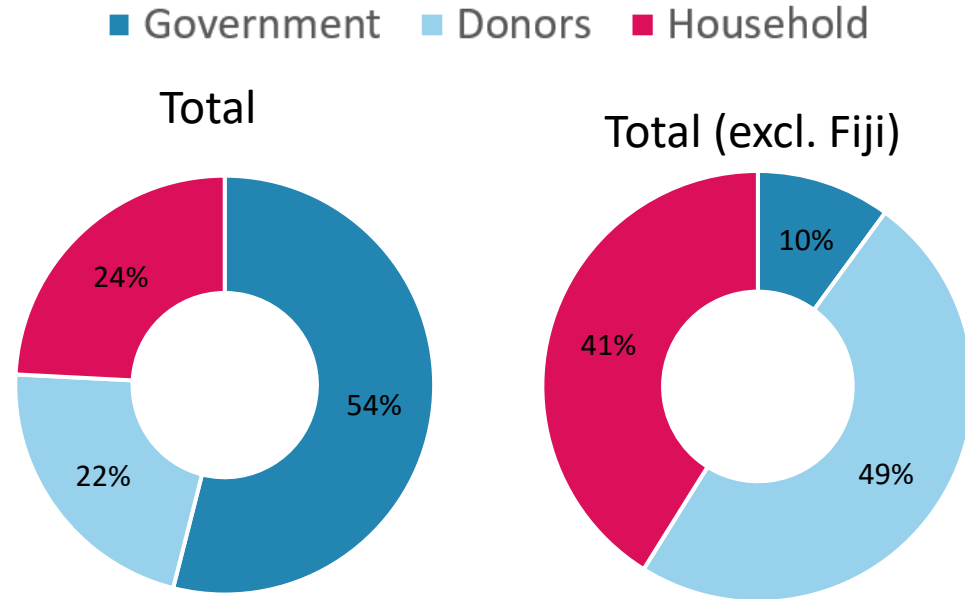
■ Governments ■ Donors ■ Households

■ Governments ■ Donors ■ Households ● WASH as % of GDP



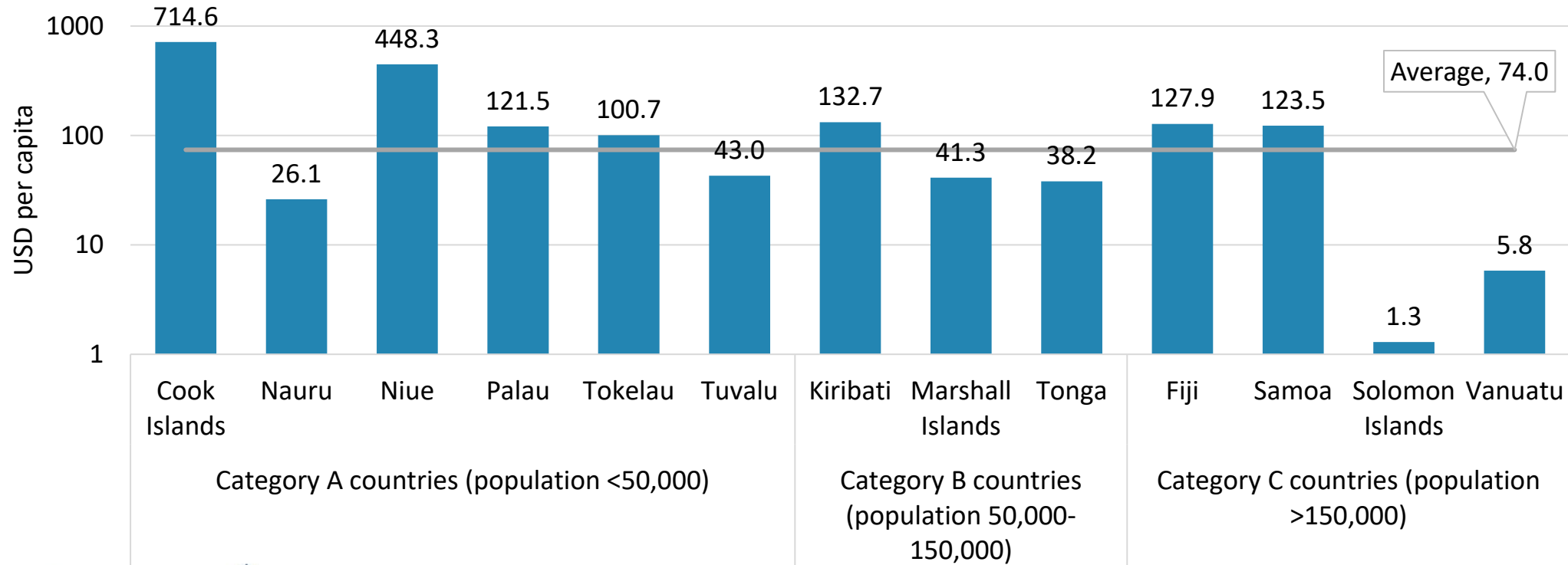
# Around half of funding comes from governments, though this drops to 10% when excluding Fiji

Water and Sanitation Funding by Source: 2016-2020



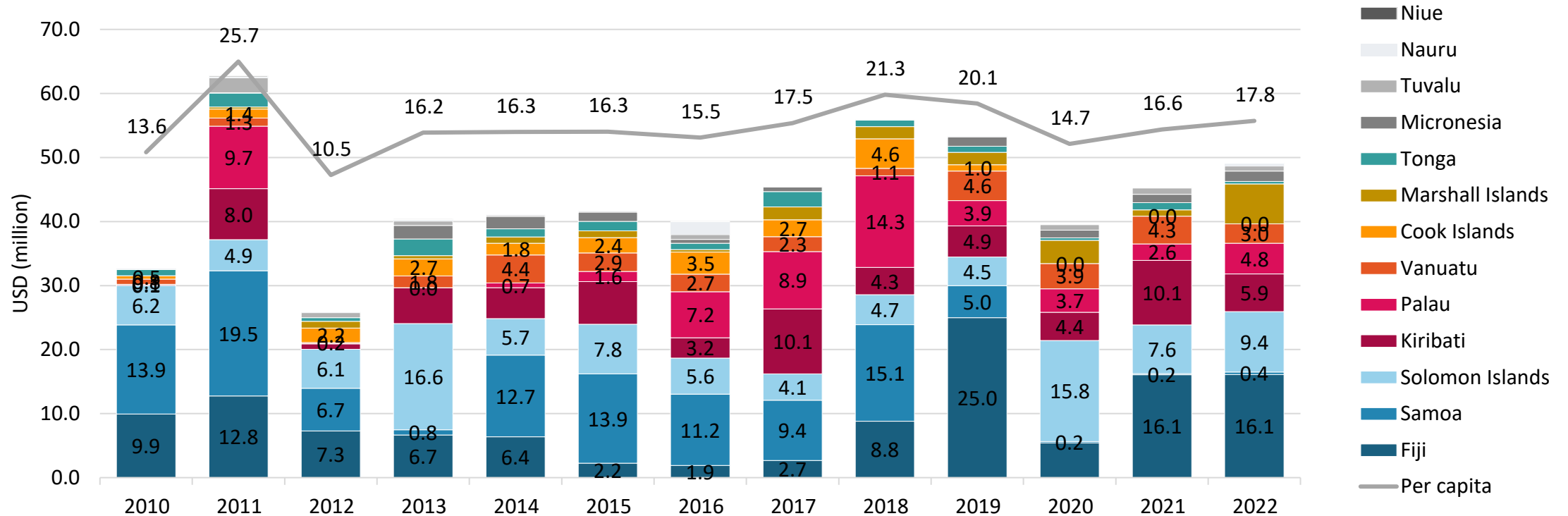
# Government budget allocations for water and sanitation vary significantly on a per capita basis

Average annual budget allocation for WASH: 2016-2020 (USD per capita)



# Donor funding for WASH peaked at \$55m in 2018 (\$21 per capita), but has fallen below \$50m since 2020

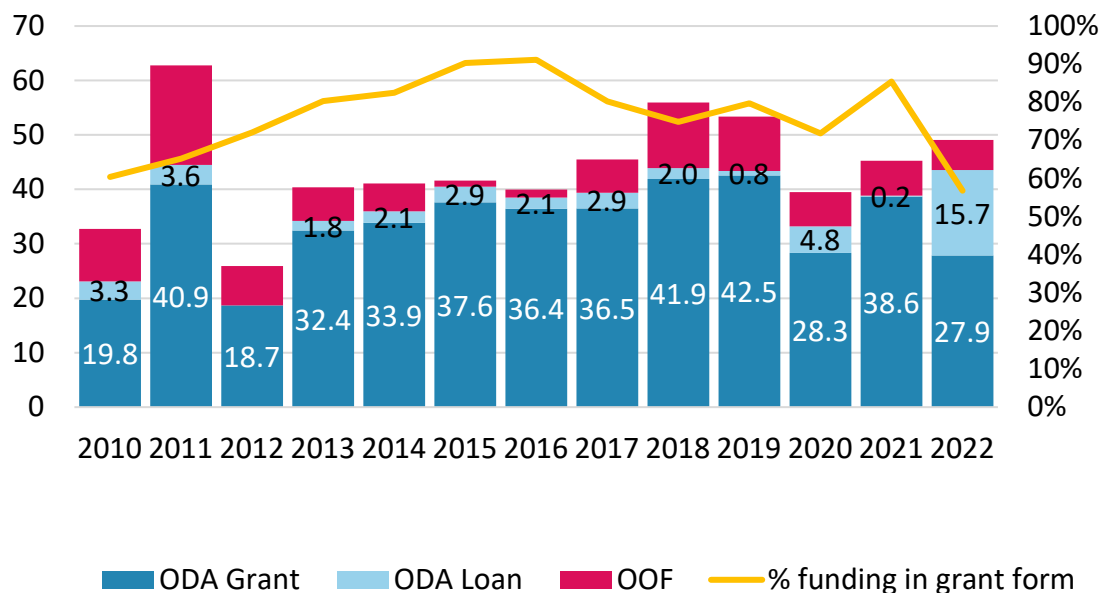
Donor Funding (disbursements) for Water Supply & Sanitation in 14 Pacific Island Countries



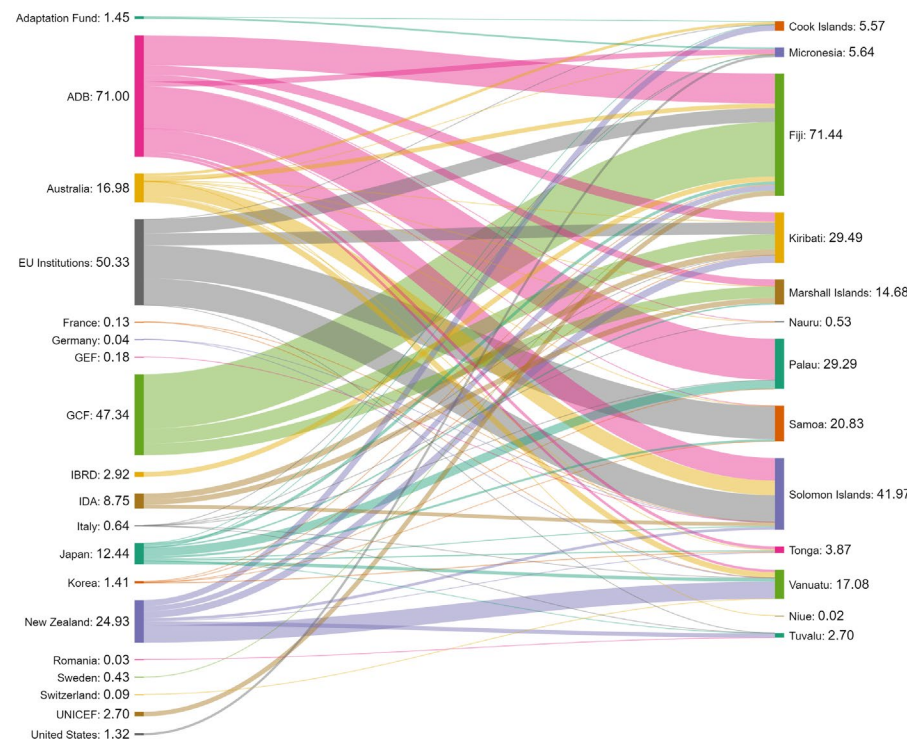
Data source: OECD Creditor Reporting System

# ADB, EU and GCF have been the largest funders in recent times, and most funding is in the form of grants

Donor funding by finance type (2010-2022)



Donor funding flows: 2018-2022

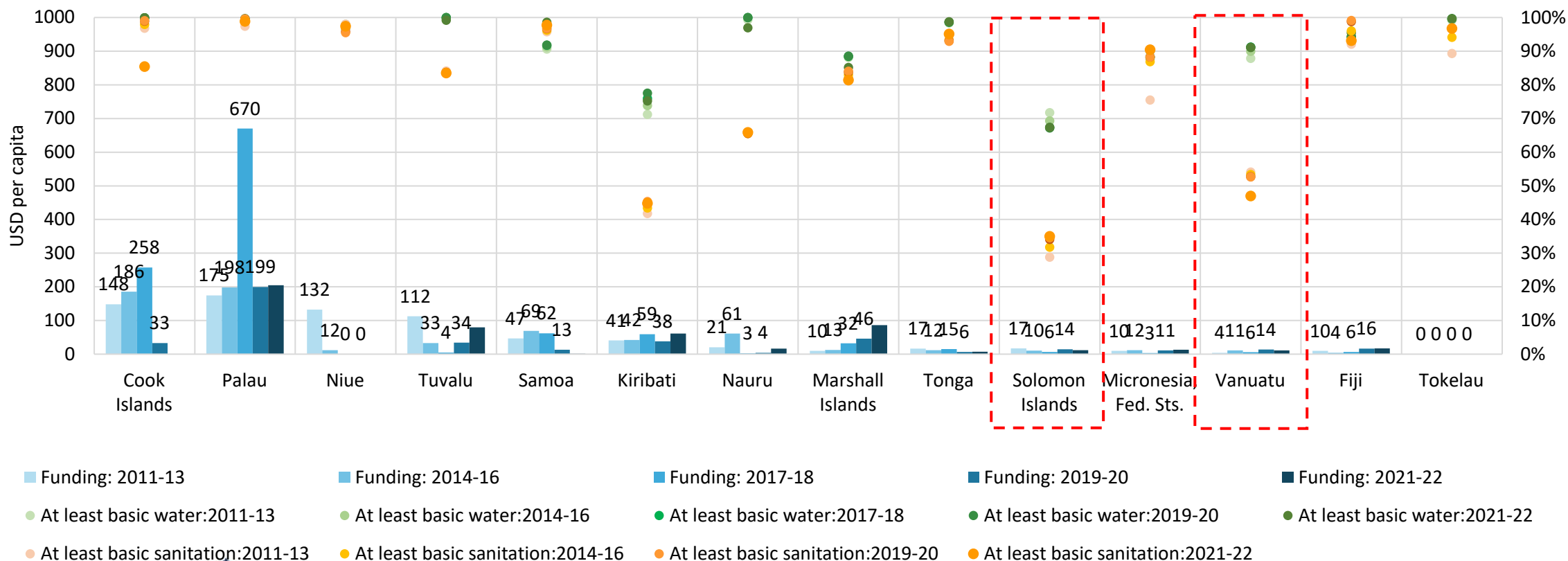


Data source: OECD Creditor Reporting System



# Donor funding is not always correlated with need

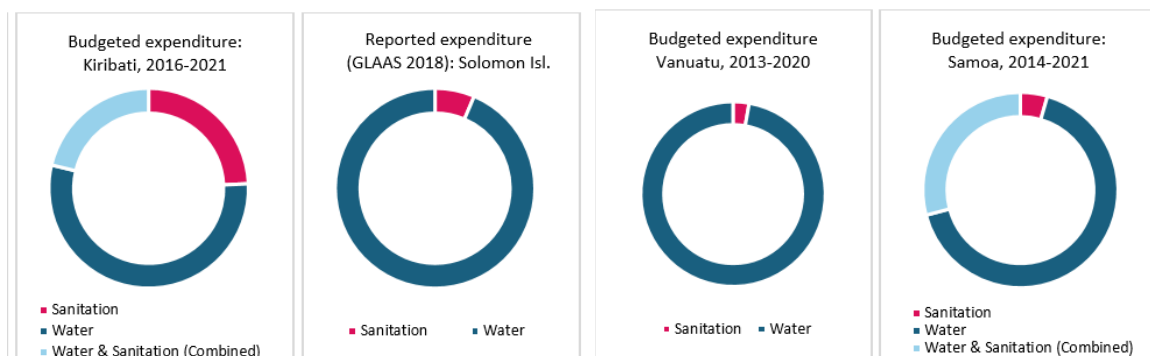
Donor funding for water and sanitation (USD per capita) vs access to basic services (2011-2022)



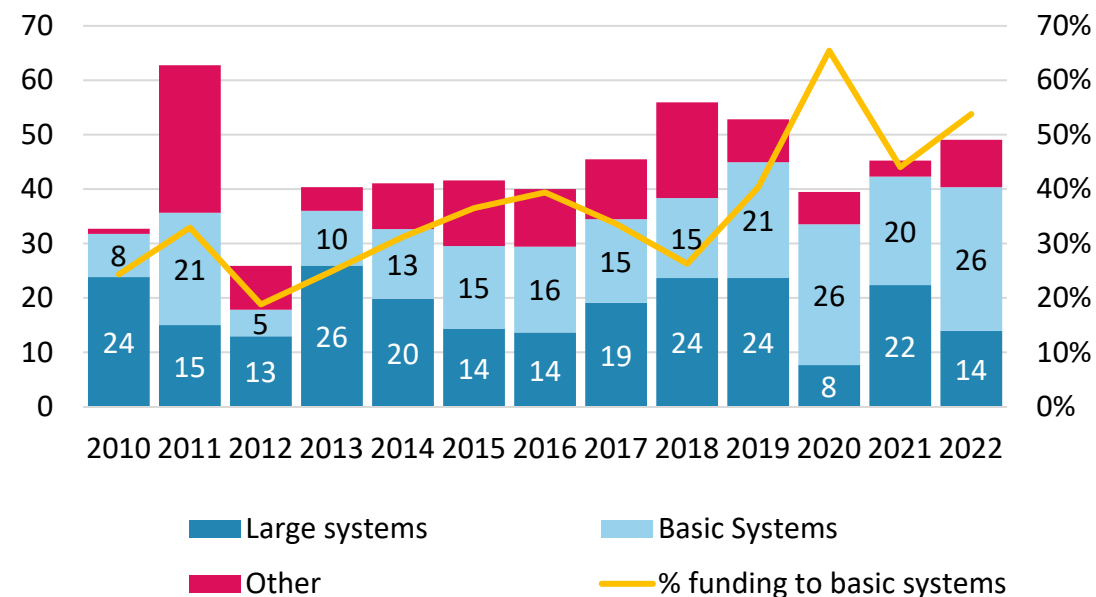
Data source: OECD Creditor Reporting System, WHO/UNICEF Joint Monitoring Programme

# Budget allocations favour water over sanitation, while donor funding shows a shift towards 'basic' systems,

Budget allocations for water vs sanitation



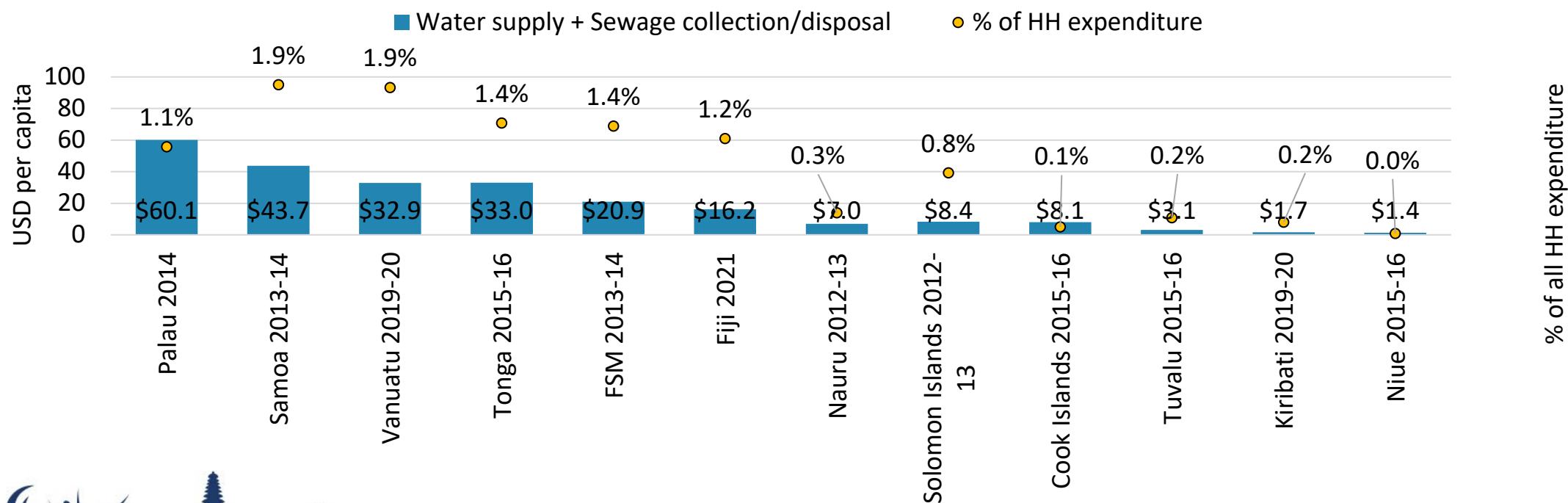
Donor funding by sub-category (2010-2022)



Data source: Analysis based on data from national budget statements and OECD Creditor Reporting System

# Household spending on water and sanitation services averages less than 2% of total household expenditure

Annual household expenditure (per capita) on water supply and sewage disposal



Data source: Analysis based on Household Income and Expenditure Surveys



# Key messages

## Funding levels

- US \$230-\$270m spent on WASH each year (US \$95-110 per person per year; 2.3% of GDP)
- Donor funding not always correlated with need

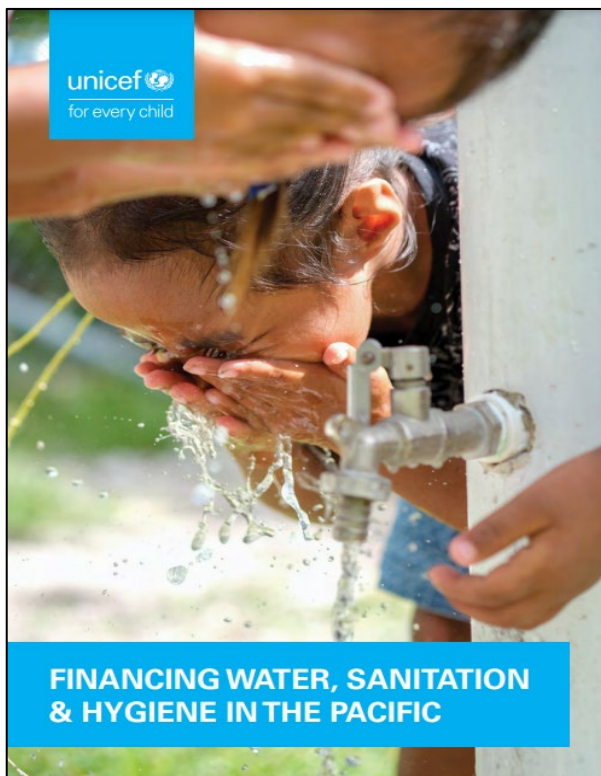
## Funding sources

- Around half (55%) of WASH funding comes from domestic governments, 20% from donors and 25% from users
- When excluding Fiji, domestic funding drops to 10-15%, with donor funding increasing to 45-55%
- Average household expenditure on water and sanitation <2% of total household expenditure

## Funding composition

- Donor funding shows a recent shift towards 'basic' systems
- Government funding is skewed towards water, despite greater sanitation needs





For further information, please contact:

James Robertson (UNICEF) [jrobertson@unicef.org](mailto:jrobertson@unicef.org)

Kencho Namgyal [knamgyal@unicef.org](mailto:knamgyal@unicef.org)

# THANK YOU

