

CHRISTOPHER BOWMAN

Double World

2013 | *Building 20, Newington Armory, Sydney Olympic Park*

The Double World was a major immersive installation that used voice, code, sound, animation, light, performance and the natural acoustic and spatial environments of three chambers in the historic Building 20 at Newington Armory, Sydney Olympic Park. The installation specifically explored motion capture technology as a source of data to create a unique visual and acoustic sensory environment.

The installation was based on an interpretation of the myth of Orpheus, focusing particularly on Orpheus's descent into the Underworld and the mysteries of the River Styx. The unique interior that consisted of three large chambers provided scope for three discrete yet inter-related works. Elements of order and chaos were investigated through choreography and traced using motion capture technology. These traces were then used to animate and sonify the three chambers providing interconnecting moments of stillness and disturbance across each.

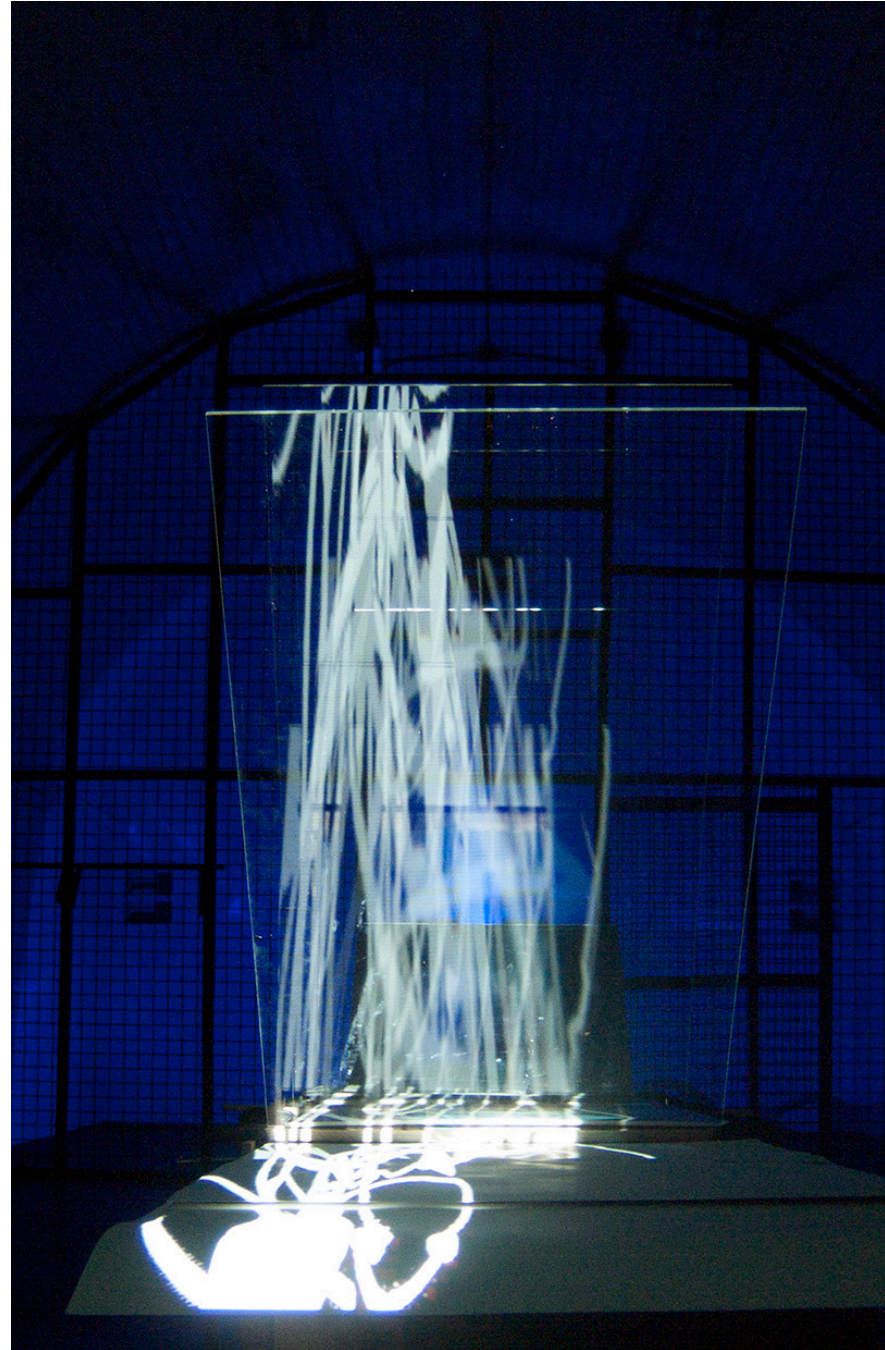
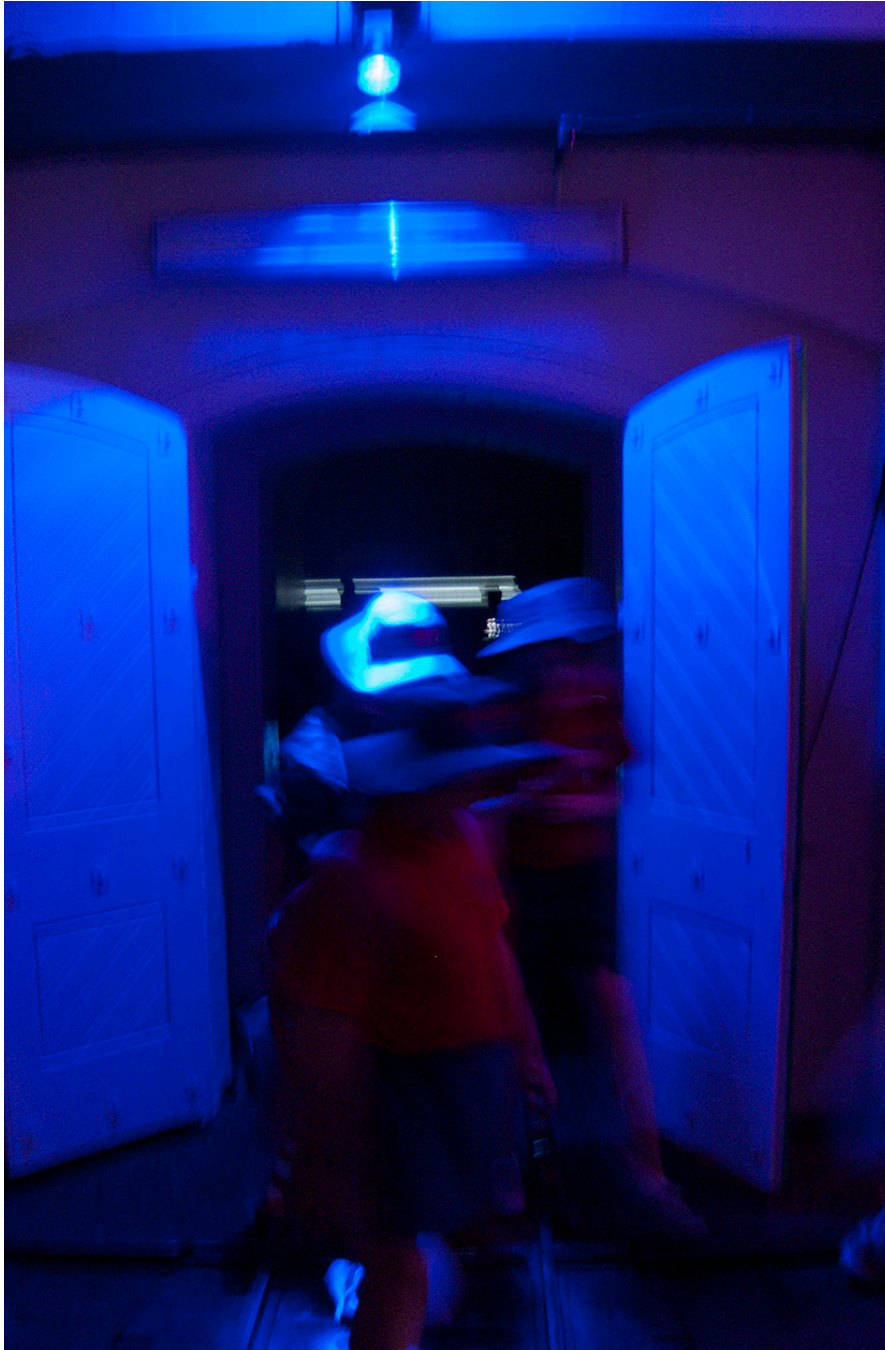
The installation featured my work along with that of Michael Day, Gavin Perin, Rachael Priddel, Michaela Coe, Meryl Tankard, Colin Black and Yanna Black.

The Double World was commissioned by Tony Nesbitt, Arts Officer for the Sydney Olympic Park Authority. During the exhibition three public events occurred, the opening night, workshops during the Youth Eco Summit 2013 and an artist's talk. Approximately 1800 persons viewed the exhibition.

Installation view, detail

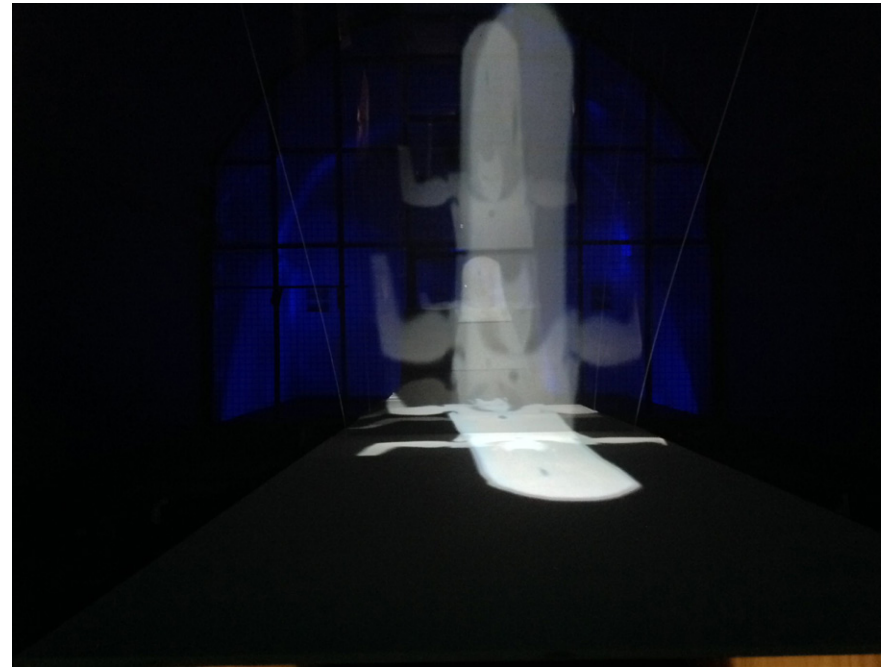
**CHRISTOPHER
BOWMAN**
Double World

Installation views



**CHRISTOPHER
BOWMAN**
Double World

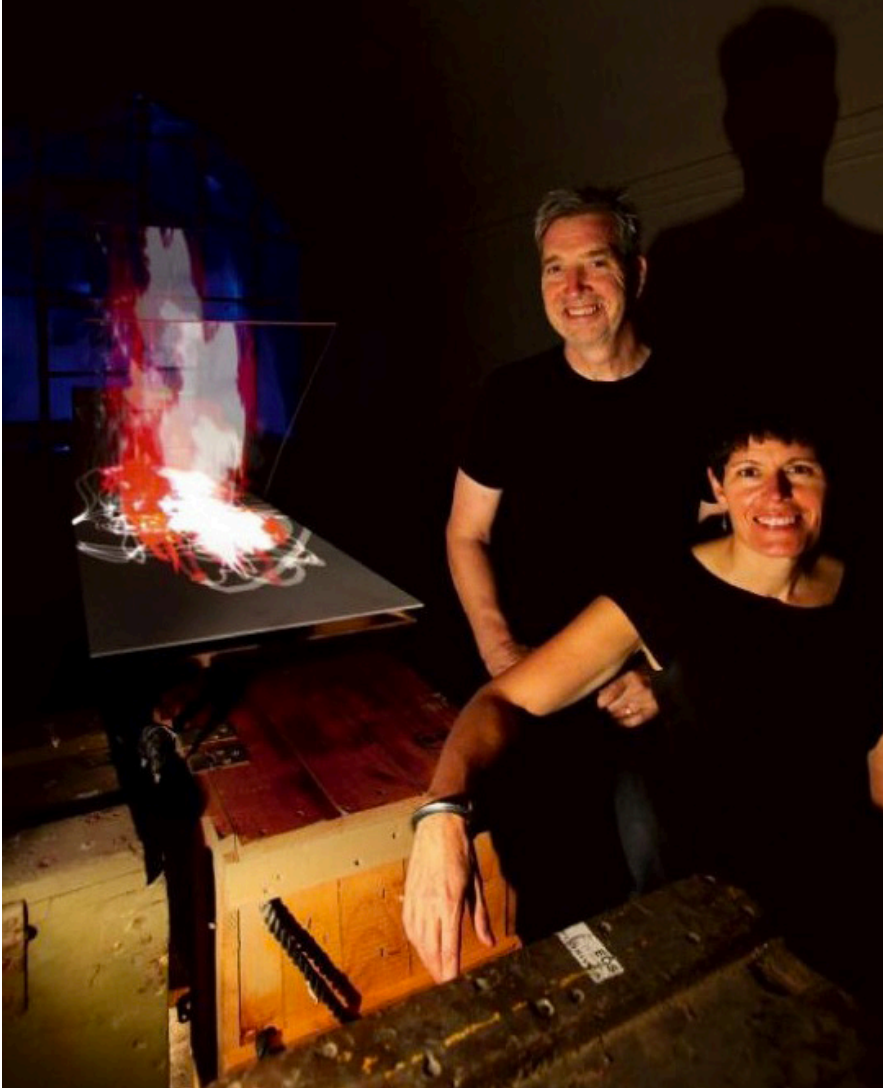
Installation views



TRANSFORMING the myth of Orpheus into a sensory experience, 'The Double World' is a mixed reality installation using voice, code, sound, animation, light, performance and acoustics and is open at the Newington Armory this weekend.

Utilising the natural acoustic and spatial environments of Building 20's three chambers, the second central chamber artistically showcases the point in the ancient Greek tragedy when Orpheus crosses the River Styx in search of his lost wife Eurydice.

The free exhibition is open from 10am to 4pm each Saturday and Sunday until November 10.



Installation open from 19 October - 10 November 2013
(Saturdays and Sundays only 10am - 4pm)

**Building 20
Newington Armory**
Sydney Olympic Park
Entrance via Jameson Street
(off Holker Street)

Blaxland Riverside Park Car Park
For travel information
(car, bicycle or ferry) visit

http://www.sydneyolympicpark.com.au/whats_on/parks/newington_armory

**Opening Private View
Saturday 19 October 2013
6.00 - 8.00 pm**

RSVP by Monday, 14 October 2013
to transturmcollective@gmail.com

Produced by tranSTURM
(Chris Bowman, Gavin Perin, Mike Day)
Creative Director: Chris Bowman
Lighting Design: Mike Day
Sound Design: Colin Black
New work by: Chris Bowman, Rachael Priddel
Michaela Coe and Jason Benedek
Motion Capture visualisation: Danial Scott
Featuring choreography of Meryl Tankard
performed by Anton Lock

*This new work would not be possible
without the support of the following:
Holger Deuter, Roger Mills, Tony Nesbitt,
Lawrence Wallen, Craig Gilliver, Andrew Bluff,
Anita Kelly, Dean English, Jessica Tse
Benedict Anderson, Bronwyn Clark-Cooler,
Jason Tran, and Matt Austin*

For more information on the
tranSTURM collective please go to
[www.http://cargocollective.com/transturm](http://cargocollective.com/transturm)

The Double World is generously supported by:



**CHRISTOPHER
BOWMAN**
Double World

Supporting evidence

1. Auburn Press review
2. Double World general promotion



Installation open from 19 October - 10 November 2013
(Saturdays and Sundays only 10.00 am - 4.00 pm)

**Building 20
Newington Armory
Sydney Olympic Park**

Public entrance from riverside (opposite wharf)
Blaxland Riverside Park Car Park
1 Jamieson Street, Silverwater, NSW

Created and produced by tranSTURM
Creative Director: Chris Bowman
Co-Directors: Gavin Perin and Mike Day
Sound Artist/Composer: Colin Black
In association with Holger Deuter, Roger Mills
Andrew Bluff, Dean English, Dieter Mack

The Double World would not be possible without the support of the following: Tony Nesbitt, Craig Gilliver, Lawrence Wallen, Benedict Anderson, Bronwyn Clark-Coolee, Anita Kelly, Mariska Jenks, Yanna Black, Matt Austin, Jason Tran, Ralph Stevenson and Andrew Lambkin

**Opening Private View
Saturday 19 October 2013
6.30 - 8.30 pm**

RSVP: transturmcollctive@gmail.com

Opening event parking: Blaxland Riverside Park Car Park
For more travel information (car, bicycle or ferry) visit
http://www.sydneyolympicpark.com.au/whats_on/parks/newington_armory

Featuring the choreography of Meryl Tankard (performed by Anton Lock) recorded and mapped for installation media and new work by:
Chris Bowman, Jason Benedek, Rachael Priddel, Michaela Coe, Jessica Tse and motion capture visualisation by Daniel Scott

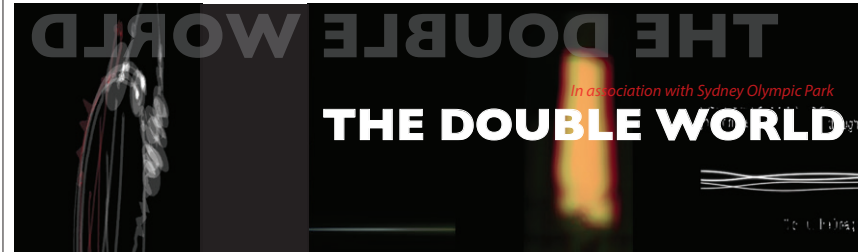
For more information on tranSTURM
www.cargocollective.com/transturm
contact us at: transturmcollctive@gmail.com

The Double World is generously supported by:



UTS CRICOS Provider Code:00099F

**CHRISTOPHER
BOWMAN**
Double World



This October, the historic Newington Armory at Sydney Olympic Park will play host to the sonic and visual sensory experience that is The Double World.

Created by the UTS-supported collective tranSTURM, The Double World will see three vast chambers of Building 20 on the Armory site transformed into an expression of light, sound and animation.

Drawing inspiration from the ancient Greek myth of Orpheus, The Double World will take the motion capture data of Meryl Tankard's choreography and re-imagine it into an investigation of light, animation and atmosphere. These mixed reality "scapes", channelled into the three chambers, will centre on the narrative point in the myth where Orpheus, ascending from the Underworld, turns, looks back and in that instant, loses his wife Eurydice forever. Rainer Maria Rilke's "Sonnets to Orpheus" are evoked as Eurydice fades into the Underworld.

The Double World references the River Styx an important aspect from the myth and draws upon the natural rhythms of the river and the Armory's important connection to Sydney's main water-way, the Parramatta River.

The creative team behind The Double World is tranSTURM is an international collective of designers, architects, composers, artists animators, performers and technologists from the University of Technology, Sydney and the Fachhochschule Kaiserslautern, Germany. This installation forms the inaugural exhibition in an overall vision to facilitate improvement and re-development of existing disused city spaces.

The Double World is part of the Youth Eco Summit 2013. In synergy with YES's goal to promote sustainability, tranSTURM aims to re-develop disused city spaces and give them new life through digital design featuring light, media facades, performance, sound and projections.

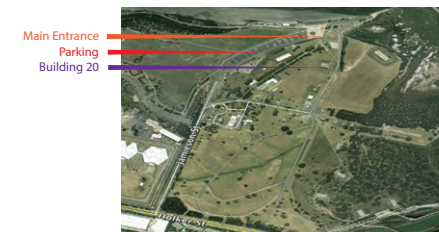
The Double World will be formally opened on Saturday October 19 by Professor Lawrence Wallen (Head of the School of Design, UTS) and Tony Nesbitt (Sydney Olympic Park Programming Manager).

If you would like to join us, please RSVP by October 15 2013 to transturmcollctive@gmail.com

Enquiries

For further media enquiries please contact Claire Ward - claire.ward@uts.edu.au

For further enquiries on tranSTURM please contact Chris Bowman - chris.bowman@uts.edu.au



Supporting evidence

Double World promotion front and back, UTS

tranSTURM presents
in association with Sydney Olympic Park

The Double World

The Double World transforms the three chambers inside Building 20 into an expression of light, sound and animation.

Drawing inspiration from the ancient Greek myth of Orpheus, The Double World takes the motion capture data of Meryl Tankard's choreography and re-imagines it into an investigation of light, animation and atmosphere. These mixed reality "scapes" centre on the narrative point in the myth where Orpheus, ascending from the Underworld, turns, looks back and in that instant, loses his wife Eurydice forever.

Rainer Maria Rilke's "Sonnets to Orpheus" are evoked as Eurydice fades into the Underworld.

The Double World references the River Styx an important aspect from the myth and draws upon the natural rhythms of the river and the Armory's important connection to Sydney's main water-way, the Parramatta River. The natural rhythms of the river, its tidal flows and currents are reflected in the temporal flows of the film and sound in each chamber.

The creative team behind The Double World is tranSTURM, an international collective of designers, architects, composers, artists animators, performers and technologists from the University of Technology, Sydney and the Fachhochschule Kaiserslautern, Germany. This installation forms the inaugural exhibition in an overall vision to facilitate improvement and re-development of existing disused city spaces.

The Double World is part of the Youth Eco Summit 2013. In synergy with YES's goal to promote sustainability, tranSTURM aims to re-develop disused city spaces and give them new life through digital design featuring light, media facades, performance, sound and projections.

For more information please contact tranSTURM at: transturmcollective@gmail.com or visit: www.cargocollective.com/transturm

Exhibition open Saturdays and Sundays 10am - 4pm
October 19 - November 10 2013

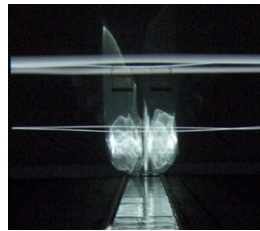
THE DOUBLE WORLD

Building 20, Newington Armory, Sydney Olympic Park

Created and produced by tranSTURM

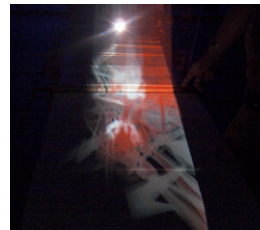
Creative Director: Chris Bowman
Co-Directors: Gavin Perin and Michael Day
Sound Artist/Composer: Colin Black
Artist/ Production Manager: Jason Benedek
Producer: Anita Kelly

Each chamber consists of original film, animation, sound compositions and light created specifically for the three interior chambers in Building 20.



Chamber 1 (Order) - the simplicity of vision and sound in this chamber reflects the attributes of the Greek God Apollo – the god of light and order.

Concept: Chris Bowman
Chamber Design: Chris Bowman and Michael Day
Sound Artist/Composer: Colin Black
Visualisation Artist: Rachael Priddel
Animation: Rachael Priddel
Lighting: Michael Day
Composer/Editor: Rachael Priddel
Featuring the poetry of Rainer Maria Rilke



Chamber 2 (the turning) – the reflections and movement of the central chamber recount the moment in the story of Orpheus where, at the gate to the underworld, he turns and loses his wife Eurydice forever to the darkness.

Concept: Chris Bowman
Film and Animation: Chris Bowman and Jason Benedek
Visualisation Artist: Jason Benedek
Sound Artist/Composer: Colin Black
Choreography: Meryl Tankard
Performance: Anton Lock
moCAP Visualisation: Daniel Scott
Lighting: Michael Day
"Mechanism" Design: Chris Bowman and Michael Day
Composer/Editor: Jason Benedek
Featuring the poetry of Rainer Maria Rilke



Chamber 3 (Chaos) – the dis-order and dis-chord of this chamber suggests the Greek God Dionysus – the god of chaos and nature.

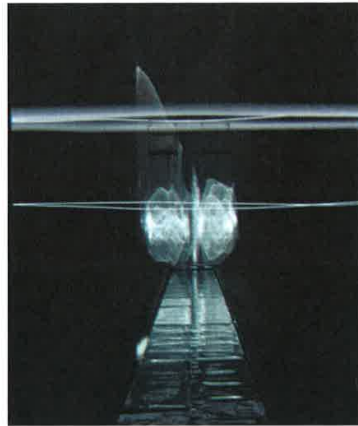
Concept: Gavin Perin and Chris Bowman
Sound Artist/Composer: Colin Black
Choreography: Meryl Tankard
moCAP Visualisation: Daniel Scott
Visualisation Artists: Michaela Coe and Jessica Tse
Animation: Michaela Coe
Lighting: Michael Day
Composer/Editor: Jason Benedek
Featuring the poetry of Rainer Maria Rilke

Andy Warhol and Gilbert & George, to Australian contemporary artists John Nixon, Ricky Swallow, James Lynch, Agatha Gothe-Snape and others. Accompanying the exhibition, a series of music events, Found Sound, explores John Cage's celebration of the aural readymade. The final installment (Oct 26) will feature Joyce Hinterding and Lawrence English.

Reinventing the Wheel: the Readymade Century, MUMA, 3 Oct-14 Dec;

<http://www.monash.edu.au/muma/exhibitions/upcoming/readymade.html>

code + design by [jstip](#) additional code +
maintenance [netcraxis](#)



Chamber 1 (Order), Chris Bowman, Michael Day, Rachael Priddel,
Colin Black, The Double World, tranSTURM collective
courtesy the artists

The Double World, tranSTURM, Newington Armory

Taking over one of the cavernous spaces of the Armory at Olympic Park, the UTS-supported tranSTURM collective has created a "double world" of light, sound and animation. Drawing inspiration from Rainer Maria Rilke's poetic exploration of the Orpheus myth the installation has been created by a collective of Australian and international designers, architects and media artists under the creative directorship of Chris Bowman. The installation also features a soundtrack by Colin Black and choreography (displayed as mapped video) by Meryl Tankard.

The Double World, tranSTURM, Newington Armory, Sydney Olympic Park, 19 Oct-10 Nov;

http://www.sydneyolympicpark.com.au/whats_on/arts_and_culture_events/exhibition_the_double_world_spr13;

<http://caroocollective.com/transturm/the-double-world>



Christophe Charfes, Bogong ELECTRIC

Bogong ELECTRIC

Following the success of the Bogong AIR festival in 2011 (see [review](#)), Philip Samartzis and Madelynn Cornish have been establishing a permanent home for sonic exploration in the village of Bogong in the north-eastern alps of Victoria. Now settled in the restored schoolhouse, the Bogong Centre for Sound Culture (BCSC) will soon present Bogong ELECTRIC, a month of performance and installations using the Kiewa Hydroelectric scheme as the starting point for investigations around natural and built environments. Guest artists include Michael Vorfeld (Germany) using the inherent

<http://www.realttimearts.net/article/issue117/11368>

11/11/2013